

WILMETTE LIFE

Published weekly by LLOYD HOLLISTER INC., 1232-1236 Central Avenue, Wilmette, Illinois. Subscription price \$2 a year.
Entered as second class matter March 13, 1924, at the post office at Wilmette, Illinois, under the act of March 3, 1879.

VOL. XXIII, NO. 29

WILMETTE, ILLINOIS, NOVEMBER 22, 1934

PRICE FIVE CENTS

MAJOR STREET PLAT EVOKES KEEN INTEREST

Hearing on Proposed Changes and Improvements Brings Capacity Audience

The public hearing held in the village hall Friday evening by the Wilmette Plan commission to hear objections to, or suggestions for the improvement of its recently developed major streets plan, drew a capacity crowd of interested citizens, none of whom seriously questioned the plan as drawn.

Large plats of the village, showing the proposed major streets, all of which, with the exception of Isabella street from Sheridan road west, lie west of Ridge avenue, were posted in the hall and eagerly scanned by property owners anxious to learn what effect eventual building of the streets will have upon subdivision projects of the future.

Plat Posted at Hall

The commission announced that the plats will remain posted in the Village hall until the meeting of the Village board on December 4, and that all who desired to inspect them were invited to do so. In case the council chamber is closed, it was stated, a key could be secured at the police department. Those desiring to file objections or suggestions were requested to write them out and send to the commission at the Village hall.

Control Development

Myles J. Phillips, president of the commission, explained that the improvements are not immediately contemplated, but that it is necessary to approve and file a plat in order

(Continued on Page 5)

Show Purposes of Village Levy in New Trier Towns

The various purposes for which the Village levy was made in each of the New Trier municipalities is shown in the following table. The Village levy, together with the levy of eight other taxing bodies make up the tax rate applied to the assessed valuation for determining the 1933 taxes now in course of collection. The levy of the other taxing bodies and the total rates in each of the villages, is shown in a table elsewhere in this paper.

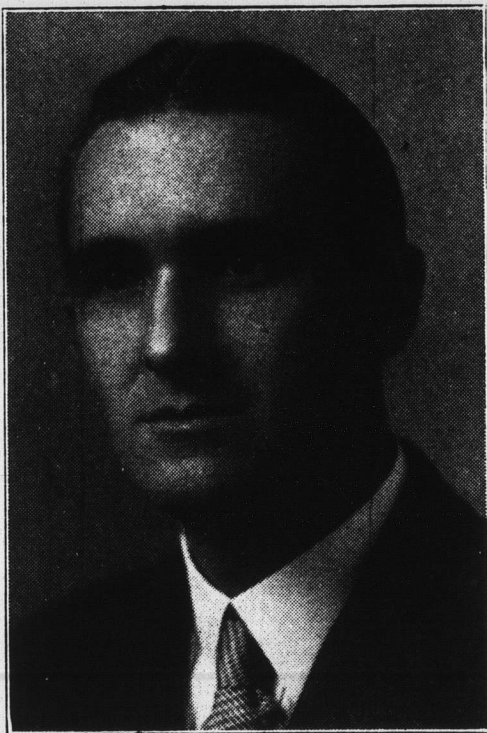
	Wil.	Kenil.	Winn.	Glen.
Corporate	\$0.6666	\$0.6666	\$0.2872	\$0.6666
Bond & int.	.0652	.2673	.0753	.2303
Garbage	.0925	.0463	.10	.10
Library	.1148		.12	.09
Police pens.	.0150		.015	
Fire pension			.02	
Public ben.	.10	.10	.10	.025
Play grnds	.0666			

\$1.1207 \$1.0802 \$0.7175 \$1.1119

PLAN SEAL CAMPAIGN

The Christmas Seal committee of the Wilmette Health Center formulated plans for the campaign which begins Friday, November 30, at a conference held last Thursday with Harry Miller, of the publicity staff of the Chicago Tuberculosis Institute.

THANK SERMON



The Rev. Amos Thornburg, minister of the Wilmette Parish Methodist church, will deliver the sermon at the union Thanksgiving services to be held Thursday morning, November 29, at 10 o'clock in the First Congregational church.

Music at the services will be provided by the quartet and choirs of the Congregational church. Ministers of the participating churches—Wilmette Baptist, Wilmette English Lutheran, First Presbyterian, Wilmette Methodist, St. Augustine's Episcopal, and First Congregational—will have a part in the service.

Proceeds from a thank-offering will go to the Wilmette Welfare board.

Public Is Invited to Big Rally on November 26

Eight short skits, songs, and report of the National Girl Scout convention held last month in Boston, Mass., will be featured at a Girl Scout Personnel Rally in Wilmette Monday evening, November 26, at the Wilmette Baptist church at 8 o'clock. The skits will be humorous and pleasantly entertaining, it is promised, and Mrs. H. E. Ringholm will give an interesting report on the national convention which she attended in October. All persons interested in Girl Scout work are invited to attend.

"All in a Dean's Day" Radio Skit Saturday

A radio skit featuring the work of the dean will be presented by the National Association of Deans of Women Saturday afternoon, November 24, at 6:30 o'clock Central Standard time, over the red network of the National Broadcasting company, during the weekly broadcast, "Our American Schools," directed by Miss Florence Hale, and sponsored by the National Education association. Music will be furnished by Joseph Littau's fourteen-piece orchestra. The association announces that it will be glad to receive comments.

Mail 1933 Tax Bills; Penalty Date January 1

EARLY DEADLINE!

Because of the Thanksgiving holiday Thursday, November 29, the deadline for all news and advertising matter for the November 29 issue of Wilmette Life will be at 9 o'clock Monday night, November 26. Co-operation of readers and advertisers in this connection will be greatly appreciated.

Dubbs Tells Why Tax Rate Is Increased

Publication of the tax levies for Cook county reveal that for the Village of Wilmette the levy for 1933-34 is 53 cents higher per \$100 assessed valuation than for the previous year. In explanation of this President C. P. Dubbs offers the following:

"The tax levy of \$1.12 per \$100 assessed valuation for the Village of Wilmette for the fiscal year 1933-34 is 53 cents higher than for the previous year, while the budget for 1933-34 was \$14,000 less than the budget for the previous year. The reason for this difference is:

- "1. The savings made during the year 1931-32 were used to help pay the expenses of the fiscal year 1932-33. This amounted to approximately \$33,000
- "2. There was no tax levy for the library, playground and recreation, policemen's and firemen's pension funds in 1932-33. In 1933-34 a levy was made for these funds, with the exception of the firemen's pension, thus increasing the tax levy for 1933-34 approximately \$32,000

"Thus the additional burden of these two items alone increased the tax levy for 1933-34 \$65,000

"In 1932-33 we could sell tax anticipation warrants up to 70 per cent of our tax levy, and in 1933-34 we could sell only up to 50 per cent of our tax levy. Therefore, it was necessary to increase the 1933-34 tax levy accordingly.

"Those are the conditions that make the tax levy higher for 1933-34, in spite of the fact that the actual total budget adopted by the corporate Village for 1933-34 was \$14,000 less than the budget adopted for 1932-33.

"It is unfortunate that our state laws governing tax levies and the sale of tax anticipation warrants work such a hardship. Possibly in time a better plan will be worked out."

Assessed Valuation Takes Drop; Wilmette, Kenilworth Rates Higher

The tax rates for the 1933 general taxes in New Trier township have been established, and according to Tax Collector Sanborn Hale, the first of the bills should be in the mails this week.

Figures compiled by Collector Hale reveal not only a material reduction in the assessed valuation of properties in the township on which these taxes are levied, but likewise a reduction in the total rate, in certain villages, while in others there is an increase.

The reduction in the assessed valuation of real estate, personal and railroad property in the entire township, as compared with that of 1932, is \$6,636,506.

In Wilmette, it is \$2,179,142; Kenilworth, \$983,509; Winnetka, \$2,682,997; Glencoe, \$835,292.

Rate Boost in Wilmette

The 1933 rate for Wilmette is \$5.91, as compared to \$5.82 in 1932. There is also an increase in Kenilworth, where the rate for 1933 is \$6.03, as compared to \$5.98 in 1932.

Winnetka, with a 1933 rate of \$5.78, shows a decrease from 6.38 in 1932, and Glencoe, likewise shows a reduction, the 1933 rate being \$6.33 as compared to \$6.77 in 1932.

The foregoing rates are made up from the levies for county, forest preserve, sanitary district, mosquito abatement district, High school, township, school district, village, and park district purposes. As will be noted in the 1933 rate table, published elsewhere in this issue, there is no state levy for 1933, which, in 1932, amounted to 50 cents. There is no levy for school district No. 40, for 1933, this district having been merged into districts 37 and 39.

Penalty Date January 1

The penalty date for the first installment of the taxes now being put into collection is set for January 1, 1935, with May 1 as the penalty date on the second installment.

Taxpayers are urged to pay their taxes promptly. Accompanying the tax bills now being sent out, Collector Hale is enclosing a notice, explaining that his office, in the State Bank of Winnetka, 739 Elm street, is open during banking hours, 8 a. m. to 2:15 p. m.; Saturdays, 8 a. m. to 12 m., and other hours to be published in the local papers. The notice further says:

Get Your Name Correct!

Be sure that your correct name and address is on the bill, and that the legal description of the property is correct on the real estate bill.

Corrections of name and address should be made on both the original and duplicate bills before paying the same. Do not detach the original from the duplicate.

Send separate check for personal (Continued on Page 11)

In This Issue

Amusement Directory	50-51
Book Comment	44
Church News	14-15
Classified Ads	52-55
Club Pages	36-43
Editorial—News-Comment	30
Junior Life	16
Major Street Plat	10
Music	32
N. S. Personalities	27
Society Pages	34-43
Tax Tables	22