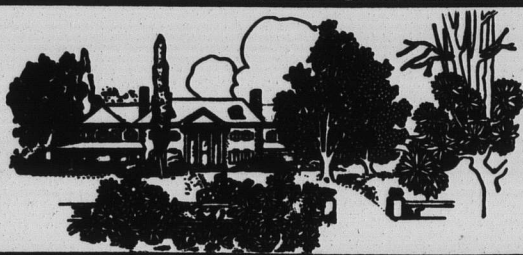


HOME AND GARDEN



SKOKIE MOVIES TUESDAY

The Progress being made in draining and reclaiming the Skokie marsh will be depicted by talks and a two-reel movie, "Building Men and Parks," which will feature a program, open to the north shore public, Tuesday evening, October 16, at 8 o'clock in the Winnetka Masonic temple, 708 Elm street, Winnetka. The motion pictures will show in a comprehensive way the system of lagoons and diversion channels—the work of the Skokie Valley CCC camp—that will control the flood water in the Skokie.

**WE CARRY
A COMPLETE LINE OF
Artist Materials
Colored Cardboard
Brushes**

WARNER PAINT CO.
604 DAVIS ST. EVANSTON
TEL. GREENLEAF 0505

WINTER LILIES OF THE VALLEY

Lilies of the valley are one of the easiest grown and surest bloomers in the house of all plants well adapted for indoor use. The lily of the valley is practically an all-season plant now, although its natural season is early spring. This is due to the development of cold storage, in which the lily of the valley roots or, as they are commercially known, pips, are held dormant until needed.

Lily of the valley roots potted from the garden, allowed to freeze, and then brought into the house, thawed and placed in a window will proceed to send out their spikes of snowy, fragrant bells in short order. The only requisite to be sure of blooms is that a blooming sized pip is planted,



the bud being already formed and dormant in the pip. While roots can be dug from the garden for this purpose, it is much easier and more certain to buy the prepared commercial pips, which are sold so cheaply and are so certain to bloom that it is hardly worth while to dig them in the garden. One month from potting to bloom is all that is required in growing cold storage pips. You can order them at any time all winter, as needed.

One of the most artistic methods of growing them is in bowls of moist sphagnum moss. When they are brought from cold storage the preliminary freezing needed for roots dug from the garden is unnecessary. You simply plant them and in the course of about three weeks they are in bloom. About 25 pips in a good sized bowl, say about 7 inches across, will give a beautiful display. Plant them in moss, fiber or soil, keep shaded until well into growth and then bring to the light. They should be stored in a cool place while growth is starting and kept shaded. A pot turned over the bowl will furnish the shade necessary.

They can be grown in soil in an ordinary flower pot most easily of all. Planted in November, they will be in flower by Christmas, putting them out about Thanksgiving time. Cold storage pips should be planted as soon as received and they will start into growth at once. Garden dug roots are slower and must be left out to freeze and brought in as needed. The cold storage pips have larger spikes and larger bells, as they are specially grown for indoor use and are

Rose Planting Discussion at Garden Center

The North Shore Garden center will have Carl Gibson Smith for its speaker at its October 15 meeting in Winnetka Community House. He will speak at 10:30 on "The Planting of Roses." Mr. Smith is considered an outstanding authority, and the members of the center are looking forward eagerly to hearing him.

All October meetings of the center are arranged by the Evanston Garden club. Mrs. Thomas Eddy and Mrs. Elizabeth Reith, representing the Evanston Garden club, are in charge for October 15. The usual floral exhibits will be shown.

Mrs. Montague Ferry, the librarian, has the new magazines on her table at the center. She will be assisted Monday by Mrs. W. E. Durbahn.

The services of the center are many, and garden-minded people are constantly being helped and entertained by it. The center wishes it understood that every one is welcome to attend each meeting, and that no charge is made.

much finer than those dug from the garden. Try half a dozen pots or bowls of lilies of the valley this winter at least. Once you have them they will be permanent additions to your winter decorations.

Remember That Bulbs Also Require Feeding

An impression is often held that bulbs which are newly planted in the fall do not require plant food. It is true that mature bulb have stored up food in themselves which largely supplies the energy for early spring growth, and which may be sufficient to produce a flower. But this is only part of the story.

At the time the flowers is being produced a large number of roots are being formed. These roots seek in the soil for plant food and water which they supply to the growing plant. If there is a deficiency of plant food in the soil, the growth of the plant is greatly hampered. The production of a vigorous, perfect flower of normal size and color requires this additional nourishment taken from the soil, without which the flower will certainly suffer, and may fail entirely.

Fully as important as flower production is the development of well matured blubs for the following year's flowering. Bulb plants that are neglected soon become worthless.

Since bulbs start to grow so early in the spring, it is difficult to work plant food into the soil so as to get it down to the bulbs before growth starts. It is therefore advisable to mix a complete plant food thoroughly in the bottom of the trench at the rate of two pounds per fifty feet of row before planting the bulbs.

EVERGREEN SALE

TREES

at CLAVEY'S

SHRUBS

A visit to the North Shore's largest and finest Nurseries will be to your advantage. Here you can make your personal selection from the largest assortment of Evergreens, Trees and Shrubs in the Chicago area.

We Do Complete Landscaping—Send for Our Representative

CASH & CARRY DEPT.

In our Cash & Carry department are hundreds of Evergreens of various sizes and varieties, each one freshly dug, balled and burlapped, ready to take home.

Open every day including Sunday.



MILWAUKEE AVE.

**CLAVEY'S
NURSERIES**

WAUKEGAN ROAD

COUNTY LINE

W. DEERFIELD RD.

F. D. CLAVEY RAVINIA NURSERIES, Inc.

The Lake Shore's Largest Nurseries

PHONE DEERFIELD 36

DEERFIELD, ILLINOIS

Take advantage of our CASH and CARRY SALE OF EVERGREENS



Your Choice of 8 varieties at only....each **\$1**

*Other Outstanding Values
50c and up*

A complete line of Spring Flowering Bulbs at Popular Prices. We will be glad to help you select exactly the right varieties to give the effect you desire—our advice is free.

and assure successful growth next spring!

Open Every Day Including Sunday

CHARLES FIORE NURSERIES

PRAIRIE VIEW, ILLINOIS

*On Route 22 between Half Day and Lake Zurich, Ill.
The Nurseries responsible for Prize-Winning Gardens,
World's Fair Horticultural Exhibits, 1933 and 1934.*

THOMAS DECORATING CO.

Painting and Decorating
1033 MAIN STREET
Wilmette 2378

—WANTED—

FIRST MORTGAGE LOANS

We have funds available for conservative mortgages on North Shore Property in amounts from \$2,000 to \$10,000.

Joseph C. Cormack & Co.

Real Estate Loans and Insurance

1569 Sherman

UNI. 3353

LIBERTY LOAN

Auto Personal Furniture

Tel. Greenleaf 1353
1569 Sherman Avenue, Evanston