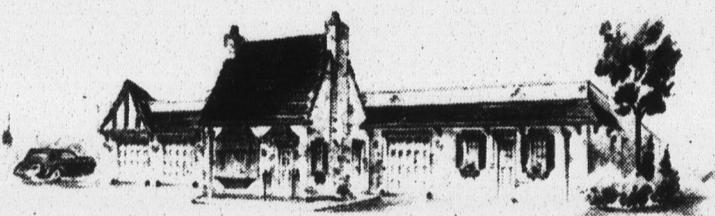


## REMODEL SERVICE STATION



Here are indicated before and after pictures of the Pure Oil Products company service station located on Fourth street just north of Linden avenue, Wilmette. The present station is being converted into an English Colonial type of structure now being universally adopted by the company.

Announcement has been made by the Pure Oil Products company that activities are already under way in the alterations of newly acquired service stations and in the building of extensive bulk plant facilities in north shore towns.

Contracts have been let and construction is beginning on the new storage plant and control laboratory on Willow road at the North Shore Electric line just west of Winnetka, this location being chosen, according to company officials, because of convenient accessibility to north shore suburbs. The company has recently added fuel oil distribution throughout the north shore area to its existing service station facilities in nearly all communities from Evanston to Lake Bluff and this storage plant, together with new truck equipment, will serve its north shore customers.

### \$100,000 Improvement

According to the plans, this \$100,000 project will consist of two modern buildings and bulk storage facilities for large quantities of all grades of burning oil and gasoline. Near the Willow road entrance a one story building will house Pure Oil company's control laboratory where the specifications of the various petroleum products will be checked upon arrival from the company's various refineries. To the rear of this laboratory will be a garage, office and warehouse building of 5,000 square foot ground area. The entire improvement, including loading racks, platforms, driveways and mechanical loading equipment will constitute a complete operating unit, according to the company, and will represent an important and much needed distributing operation because of its retail distribution and burning oil gallonage in the north shore area.

### Follow Color Scheme

The company's activities in the retail operations of their business involve the alteration of two existing but newly acquired service stations and in the building of a complete lubridome type of service station on unimproved ground. A long term lease has been

negotiated on the service station and garage property located on Fourth street just north of Linden avenue in Wilmette. This property is now being altered to conform with Pure Oil's English Cottage type of service station improvement, and when completed will show the blue and white colors which characterize all of the company's service station outlets. With the alterations as covered by the plans, and with the modernization of equipment, a total of approximately \$3,000 will have been spent, and the station improved to give complete service to meet all motor car requirements.

## Money Rolls In From Dog Tax Delinquents

The Village exchequer is being abundantly replenished this week through collections of delinquent dog licenses. More than 250 summonses were served recently, all returnable Monday. About sixty cases were disposed of by Judge John J. Peters in police court on that day. The Village ordinance provides that dog licenses are due and payable on January 1 of each year, and there is no exemption for puppies. The fee has been reduced to a straight \$3 for male or female. Owners of dogs are expected to secure licenses early in the year.

### MAIL 1932 TAX BILLS

Sanborn Hale, New Trier township tax collector, announces that he has been advised that the 1932 corrected bills for the second installment of real estate taxes are being made out and will be in the mails, perhaps this week.

Miss Virginia Lee Brock of 601 Ridge road, Kenilworth, returned home from camp July 24, in order to accompany her parents, Mr. and Mrs. Louis Brock, on a motor trip to Minnesota. They will go to Signal mountain, Tenn., August 15.

## FINE QUALITY FOODS AT REAL SAVINGS!

Food  Stores



IONA BRAND SLICED

**Pineapple . . . 2 NO. 2 1/2 CANS 35c**

DEL MONTE TOMATO SAUCE

**Sardines . . . 3 OVAL TINS 25c**

UNEEDA PREMIUM FLAKE

**Crackers . . . 3 1/2 LB. PKGS. 17c**

WELCH'S

**Grape Juice . 2 PT. BTL. 35c**

ANN PAGE ASSORTED FRUIT

**Preserves 2-LB. JAR 25c**

STRAWBERRY AND RASPBERRY . . . . . 2-LB. JAR 29c

Shop early—quantities are limited on these fine fruit preserves

**New Improvement**  
DOESN'T MELT IN SUMMER HEAT—  
FINE FOR TABLE—BAKING—COOKING  
**GOOD LUCK**  
MARGARINE  
**2 LBS. 27c**

WHITE HOUSE  
**MILK**

4 TALL CANS **23c**

**OLIVIO SOAP**

5 CAKES **25c**

**BOILED HAM**

HALF LB. **19c**

**Shredded Wheat**

2 PKGS. **23c**

CALIFORNIA  
VALENCIA

**ORANGES**  
SIZE 252 288 doz. **25c**  
SIZE 200-216, DOZ. 29c

RAJAH  
PREPARED  
**Mustard**  
9-OZ. JAR **8c**

NEW COOKING  
**APPLES**

5 LBS. **25c**

SUNNYFIELD  
**BACON**

1/2-LB. PKG. **14c**

RAJAH SALAD  
**Dressing**

QT. JAR **25c**

FRESH  
**GREEN PEAS**  
2 LBS. **29c**

CRISP WHITE  
MICHIGAN

**CELERY**  
2 stalks **11c**

IONA BRAND  
**PEAS**

2 NO. 2 CANS **25c**

PETER PAN  
**PEAS**

16-OZ. CAN **15c**

**Doggie Dinner**

3 1-LB. CANS **25c**

FRESH BRICK  
**CHEESE**

LB. **17c**

**Legs of Lamb . . lb. 17 1/2c**

FANCY, FRESH DRESSED

**Broilers . . . . . lb. 25 1/2c**

PRIME NATIVE

**Ribs of Beef . . . . . lb. 15c**

1ST TO 5TH, 19c

6TH AND 7TH RIBS

**Pot Roast . . . . . lb. 10c**

CENTER CUT CHUCK, 14c



**V & P FOOD STORES**