



Special Prices Nov. 30, Dec. 1 and 2

COFFEE

Your Breakfast Blend
Fresh, fragrant,
substantial.
lb. 19c



PEAS box 23c
PEACHES . . . box 23c
SPINACH . . . box 23c

SYRUP

Aunt Norma's Best
Pure cane and maple
pt. 23c

Butter

Best Roll
lb. 30c

Rice

Fancy Whole
2 lbs. 11c

Lifebuoy

Toilet Soap
bar 6c

California Valencia

ORANGES . . 2 doz 49c**Grapefruit.** Texas . 6 for 29c**Russet Pears** bskt. 25c**Finger Carrots** . 2 bch. 15c**White Turnips** lb. 5c**Mushrooms** lb. 29c**Iceberg Lettuce** . . 2 for 19c

Extra Fine Wisconsin Cobbler

White Potatoes . . . peck 39c**Eggs**

Table Quality
doz. 30c

Ralston

Hot Cereal
ctn. 21c

Vinegar

Uncle Hiram
Pure Apple
qt. 11c

CHOC. CHIP COOKIES

Mrs. Parker's new creation . . lb. 39c

CHOCOLATE BUDS

Hershey foil wrapped lb. 27c

WHOLE APRICOTS

Baby Stuart
fancy peeled 2 No. 2 1/2 tins 45c

SHELLED PECANS

Large, whole halves lb. 59c

PIE CHERRIES

Sour, red, pitted 2 No. 2 tins 29c

TOMATOES

Tri-Country Heavy Pack 6 No. 2 1/2 tins 69c

LEG OF LAMB lb. 27c**PORK ROAST** . . lb. 19c **Sirloin Steaks** . . lb. 43c**ARMOUR'S HAMS.** Whole or Shank End . lb. 25c**BROOKFIELD SAUSAGE.** Links . . . lb. 26c

Patties . . . lb. 22c

FRESH LAKE SUPERIOR WHITE FISH . . lb. 33c

PHONE
WIL.
510

VAN DEUSEN'S

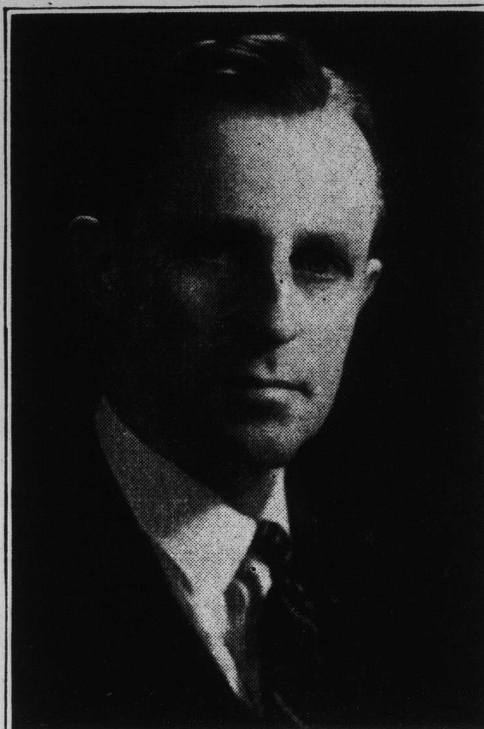
Central at Twelfth — Wilmette

Free Hourly Delivery — Ten Phones — Monthly Charge Accounts

PHONE
WIL.
510

USE THIS ECONOMY COFFEE COUPON

We are introducing a new economy coffee
— YOUR BREAKFAST BLEND — fresh
ground, fragrant, substantial. Until December
6th, 1939, this coupon and only 12 1/2c entitles
you to a trial pound to demonstrate its sav-
ing satisfaction.

VAN DEUSEN'S**Work Applauded**

Under the direction of Chair-
man Staver Moulding, 730 Elm-
wood avenue, Wilmette Commu-
nity Chest association, for the
first time in its history, has
reached the goal of its cam-
paign. Asking villagers for a
total of \$26,300, the association
is highly gratified to be able to
report an oversubscription. Co-
workers in the drive are giving
Mr. Moulding much credit for
the successful outcome.

**Edith Ray Young Now
Resumes Piano Teaching**

Miss Edith Ray Young begins her
piano teaching this week in Wil-
mette after an illness of several
months. She spent the time she
was away from the village in Vin-
cennes, Ind., with her brother, and
visiting in Louisville and French
Lick. While in Indiana she resumed
some music study work with her
teacher, Cecilia Ray Berry. Miss
Berry is living in Bloomington, Ind.,
while orchestrating her music for
her opera. The production of the
work on a large scale is now ar-
ranged for the fall of 1940.

IN RECITAL

Miss Jane Henderson, 1326 Ash-
land avenue, will participate in the
modern dance recital which the Or-
chosis group of the physical educa-
tion department of Northwestern uni-
versity will give at the School of
Speech on the campus December 5,
6, 7, 8 and 9, at 8 o'clock in the eve-
ning under the direction of Miss Ag-
nes Jones. Miss Henderson is presi-
dent of the group.

Mrs. Arthur W. Ruf, 236 Cumnor
road, Kenilworth, flew to California
Wednesday of last week to spend
two or three weeks visiting her son
and daughter-in-law, Mr. and Mrs.
A. B. Ruf of Los Angeles.

**Open Food and
Appliance Show
Tuesday, Dec. 5**

**Winnetka Community House to
Be Scene of Three-Day North
Shore Enterprise**

The doors of the North Shore Food
Show and Home Appliance exhibi-
tion will swing open at 1:30 p.m.
Tuesday, December 5, in Winnetka
Community House, and will remain
open to the public daily from 1:30
to 10 p.m., Tuesday, Wednesday and
Thursday.

Business men in every community
from Evanston to Lake Forest are
acting as hosts. These business men
have purchased complimentary ad-
mission tickets for all customers and
friends, and to secure tickets, all a
person need do is to ask a merchant
for them. They are absolutely free
with no strings or conditions attach-
ed.

Sponsored By Church Group

Mrs. C. C. Tatham, president of
the Woman's society of the North
Shore Methodist church of Glencoe,
sponsor of the show, says: "We
are expecting ten thousand North
Shore people to visit the exhibition
during the three days."

The very latest in home appliances
will be shown. A model gas kitchen
will be displayed on the stage by
the North Shore Gas company, and
numerous other exhibitors will show
many interesting time-saving de-
vices, all of which will be dem-
onstrated by trained specialists.

Daily Cooking School

Margaret Murphy's talk on the
use and preparation of canned food
on December 7 at 2:00 p.m. will
feature the daily cooking school. A
style show, with live models, will
be an outstanding attraction of the
evening, says Mrs. Stanley Clark,
chairman.

Programs of dancing will precede
the style show. A variety program
by the International Gladys Hight
School of Dancing will include Miss
Violet Strand and Giner Wood, fa-
culty members; Jarzem and Ganel,
exotic dance team; Billie Lawrence,
sensational contortionist; Charlotte
Field, outstanding acrobatic aerial
artist; Lorraine Uebel, roller skate
tapper; Patsy Coney, trap drummer
and tap dancer, and a line of girls.
All the performers are Hight trained
and have been professionally placed
by the Gladys Hight school.

MONTHLY BRIDGE LUNCHEON

The North Shore group of Alpha
Chi Omega Alumnae will meet Tues-
day, December 5, at the home of
Mrs. Joseph Nelson, 4726 Hermit-
age avenue, Chicago, for its monthly
one-o'clock luncheon and bridge.

PEACOCK'S
ICE CREAM

TELEPHONE WIL. 4120

Special Brick . . .

Macaroon Bisque
Lemon Ice and Vanilla

Regular
50c value

45c
QUART

413 LINDEN AVE. WILMETTE