

**ON CAMPING TRIP**

Lawrence Tower of 1132 Forest avenue and Roland Davis of 701 Washington avenue will leave on Saturday by motor for Danbury, Wis., where they will camp for a week.

**\$5.**Is All  
You NeedTo Hold Your  
Cloth or Fur  
Coat Now!**BEZARK'S**

**THE BEAUTIFUL  
NIPPERSINK  
HOTEL AND COUNTRY CLUB  
GENOA CITY, WISCONSIN**

Most modern and complete resort in the lake region. 67 miles from Chicago. Excellent golf course. Cabled horses. New thrill for bathers—Cabana beach. Shimmer floating swimming pool. 12 new stone and stucco cottages. A meridian plan.

Daily \$4. All-expense, including transportation and greens fee. Weekly \$27.50, Sunday to Friday \$30.

Rate bath: two to a room. Selected patronage. Illustrated folder upon request.

Chicago office (near close)  
333 N. Michigan Franklin 7100

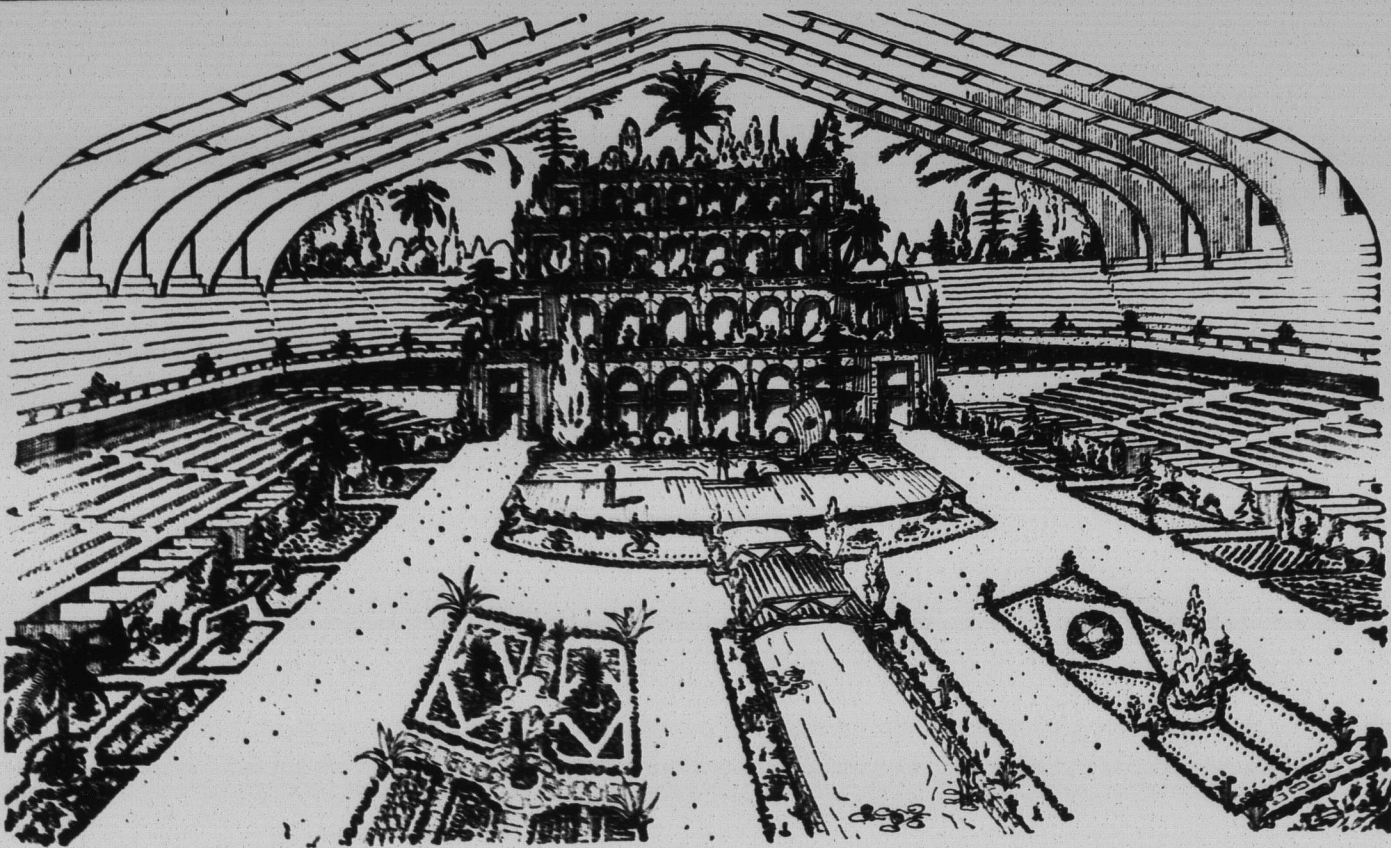
Read the Want-Ads

## IF YOU WANT TO BUILD *See Us*

We are making loans for the construction of new homes and small apartments. Our average interest charge is approximately 5%. Loans are made on F. H. A. and similar, long-term plans. You pay back the loan in monthly installments, equivalent to rent. Building is free and clear when original loan has been paid. No mortgage renewal necessary when you borrow this way. If you are in position to assume a sound repayment schedule, we offer you an economical, convenient way to finance construction. Come in and talk it over with our officers.

**FIRST NATIONAL BANK  
AND TRUST COMPANY**  
*Fountain Square, Evanston*  
800 DAVIS STREET

## ARRANGE FOR HORTICULTURAL EXPOSITION



Pictured above is an artist's conception of the central arena of the International Amphitheater at the Chicago Stock Yards as it will appear during the first International Horticultural Exposition ever to be held in America. The show will take place September 12 to 20.

In the background is a reproduction of the Gardens of Babylon. They will occupy an area 100 feet wide and will rise by terraces to a height of 65 feet. Model flower gardens will be arranged on either side of the arena with a lagoon and fountains in the center, interspersed by walks for the use of the public.

The management announces that programs of entertainment and education will take place every afternoon and evening during the exposition.

Unusual lighting effects have been planned to give color variations and further add to the scenic effects.

O. T. Henkle, president of the exposition, informs that the 7,500 seats of the amphitheater will be free to the public at all times.

The four huge exhibit halls of the International Amphitheater will be occupied by competitive displays of flowers, arrangements, gardens, fruits, vegetables, and nuts. Competition will be open to individual exhibitors as well as commercial growers and garden clubs. Amateur growers will be given the chance to exhibit the results of their study and labor.

Educational features will include demonstrations by experts on many gardening practices. There will also be daily lectures on numerous phases of horticulture, illustrated by motion pictures.

To date 26 state colleges, the Ontario Agricultural College, and the United States Department of Agriculture have offered their full support and cooperation to the exposition, as well as horticultural organizations of national note.

### SAFETY SUGGESTIONS

The other day in a midwestern city two women were driving along the street with a dog in the back seat of their car. The animal got excited about something and jumped into the front seat. The driver lost control of the wheel and the car crashed into a telephone pole. Both women were injured.

The National Safety council points out two object lessons from this incident: First, dogs and other pets do not belong in cars, and second, drivers should learn to remain cool and keep their presence of mind under any circumstances. Cool, steady drivers seldom get in accidents.

Besides endangering your own safety by riding dogs in your car, you are being very unkind to the animals. They are apt to get sick or even go

mad while enclosed in a hot, stuffy car without any water.

Leave the pets at home when you go for a drive, the Safety council advises.

It has become quite a practice for motorists to use dark glasses, particularly on long trips. Glare from the sun's rays is tiring on the sensitive structure of our eyes, and dark glasses can be quite beneficial in softening the light.

The National Safety council has been told by a lighting expert that a person's eyes are much less fatigued by a color of short wave length than one of long wave length. Short wave length colors are blue or violet and long wave length colors red or orange.

The Safety council suggests that persons planning long trips should experiment with several different colors of glasses to determine which is the most restful to their eyes.

Eye fatigue is a contributing factor in many automobile accidents, and wise motorists will avoid any strain that may reduce their driving efficiency.

A Chicago man fell asleep at noon the other day on the beach of Lake Michigan and lay there for six hours in the glaring sun. He was clad only in trunks, and when he woke, his back was so severely burned that he was unable to walk.

The National Safety council brings this story to you as a warning against the dangers of excessive exposure to the sun. A deep, dark sun tan—often to be admired—is apt to prove a serious danger to health. We require only a small amount of sunshine for the maintenance of normal health, and the greatest danger lies in too much exposure rather than too little.

If you must be a sun worshipper, get your tan gradually and avoid injuring your health.

Mr. and Mrs. E. H. Burge of 924 Forest avenue with Alison, Barbara and Donald, are leaving today (Thursday) for Hayward, Wis., where they plan to vacation for a week.