

Relief Issue Still Puzzle to N. T. Board

(Continued from Page 3)

said, than many other townships in the county.

The township unit plan, and a three mill tax, would work a great hardship on some townships in the county, she pointed out, particularly in the cases where there is an overlapping of township areas within the city limits of Chicago. Property thus affected, would come in for a double tax for relief.

The situation appears to be the same all over the country, Mrs. Van der Vries said. The authorities do not know what to do, but, there appears to be a tendency to get relief down to local management, and if the 3 mill tax is not sufficient, the revenue will have to be increased.

Favors Localized Scheme

At a previous meeting of the Township board, Justice of the Peace Edmund W. Burke was quoted as saying in his opinion if the township ultimately is compelled to take over the care of its own families on relief, it could do a better job than is being done.

Mr. Burke said he did not wish to convey that a good job is not being done, but he feels that New Trier will be able to do just as well.

"I'm a lawyer," he said, "and necessarily a partisan, and feel that we can do just as well, if not better. In no sense am I criticizing what is being done."

A. W. Wigglesworth and Harry W. Mons, both of Kenilworth, motored to Detroit for a short business trip early last week.

Economy Shop

Those who are spring house-cleaning are again reminded that the Economy Shop is glad to receive furniture, household equipment, clothing, dishes, in fact donations of any kind which housewives wish to dispose of at this time. Contributions have been coming in steadily in recent weeks, and the shop now has a large stock on hand from which customers may make selections. Additional donations, however, are always welcome.

—Marian Kremer, chairman.

Note: Economy Shop is conducted by the Woman's Club of Wilmette.

CIVIL SERVICE EXAMS

The United States' Civil Service commission has announced open competitive examinations as follows:

Assistant adviser in labor law administration, \$2,600 a year, Division of Labor Standards, Department of Labor.

Senior paper technologist, \$4,600 a year, Forest Service, Department of Agriculture.

Associate gas engineer, \$3,200 a year, Bureau of Mines, Department of the Interior.

Full information may be obtained from M. E. Von Glahn, secretary of the U. S. Civil Service board of examiners, at the Wilmette post office.

Louis A. Ellisburg

Professional Pharmacist

Loyal to the Ethical Tradition
Personal Professional Service

BOULEVARD DRUG STORE

Eleventh and Central Wil. 4298

Store Hours 8 a. m. to 5:30 p. m. Saturday to 9 p. m.

WORTHEN'S

1146-1148 Wilmette Avenue

Phones: Wilmette 588-589

May Sale of CURTAINS

Priscilla Style

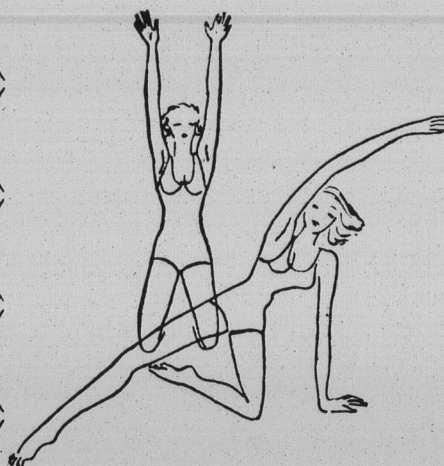
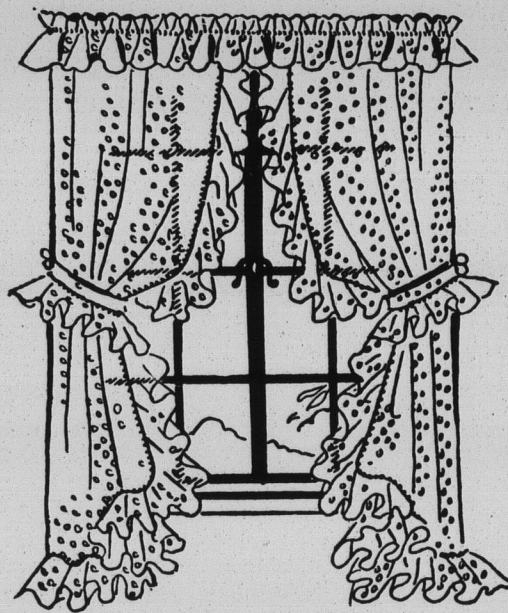
Cushion Dotted
Marquisette

\$1.25 Pair

Cottage Curtains

Five-Piece Sets
for Kitchen

\$1.25 Pair



Gossard's Summer Foundation Garments

Mesh and Voile Fabrics

\$3.50 and \$5.00

Summer Girdle

Mesh and Voile Fabrics

\$1.50 and \$2.00

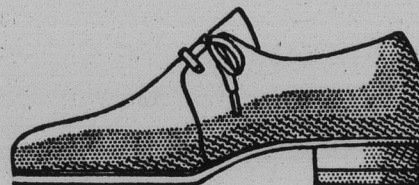
HALLELUJAH!

The "PATH TO BEAUTY" is YOURS for the asking! Everybody's raving about this new diet and exercise book that The H. W. Gossard Co. prepared for us. Just ask for your copy . . . IT IS FREE.

Wednesday, May 20th

Mrs. Baumgartner, a Gossard expert Corsetiere, will be with us all day for private consultation relative to your corset problems.

Wear White Shoes for Summer



Four-hole oxfords and one-hole ties. Canvas uppers, crepe soles, Cuban heel, also cushion heel. Four styles selling all at one price.

\$1.65 Pair



MEATS

Consistently low prices mean savings to you. Every week end we offer several exceptionally outstanding values, items which are priced particularly low. To aid you in your marketing we are starring these items, and suggest that you take advantage of them.



★ Genuine Native Spring
Leg-o-Lamb
Special, lb. **23½c**

Cold Meat Specials

Milwaukee Style
Frankfurters, lb. **19c**

Home-Made Potato
Salad, lb. **19c**

Delicious Creamed
Cottage Cheese, lb. **10c**

Soft Summer Sausage,
lb. **29c**

Assorted Sliced Cold
Meat Cuts, lb. **29c**

Very Best Cloverleaf
Butter, Special, lb. **29c**

Strictly Fresh Selected
Eggs, doz. **25c**

Sugar-Cured Lean Cali
Hams, lb. **18c**

Lakeview Brand Sliced
Bacon, lb. **29c**

Choice Milk-Fed Short
Leg Veal Roast, lb. **17c**

Pork Loin Roast, Rib or
Loin End, lb. **18c**

Strictly Fresh Lake
Trout, lb. **19c**

Fresh-Caught Boneless
Lake Perch, lb. **27c**

Very Best Monarch Coffee,
Vacuum Sealed Cans, **23½c**
lb.

★ Very Best Choice
Boneless Rolled
Rib Roast Beef
lb. **20c**
Small Ends, lb. **25½c**

LAKE VIEW *Quality* MARKETS
R. HORKY, Inc.

1123 Central—Wilmette 2494

825 Ridge—Wilmette 701