

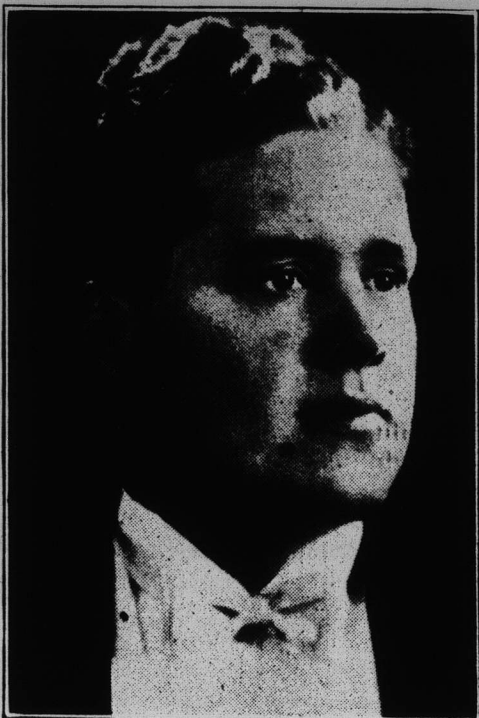
## Catholic Club's Program on Friday

Laura and Eugene Howardsen Present Presidents' Day Musicale  
September 27

Another year for the Woman's Catholic Club of Wilmette is being introduced Friday afternoon, September 27, with a program of songs by Laura and Eugene Howardsen. The musicale, following the president's address, and a talk by Mrs. Maurice H. Lieber on current events, takes place on Presidents' day, at which past presidents of the club will be hostesses.

Laura Howardsen, coloratura soprano, and her brother, Eugene, lyric tenor and accompanist, present the program. These talented young artists are becoming very popular among women's clubs in Chicago and vicinity, it is said. They have appeared at the Chicago Woman's club, the Norshore Catholic Women's league, Windsor Woman's club, and others. They have also appeared before the various musical organizations of prominence in the city. Miss Howardsen is a winner of the Chicago Woman's Musical club scholarship contest, and has been runner-up in other contests. She was presented in May of this year in a debut recital at Kimball hall by the Musical Guild of Chicago, and met with warm praise from the critics. She is heard regularly over Station WAAF on Saturdays at 3:30 o'clock in a fifteen-minute song recital.

## In Club Musicale



Theatrical Studio

A lyric tenor, whom critics claim to be a brilliant musician of the younger generation, is William Miller, who will sing at the musicale and reception that opens the Neighbors club Tuesday afternoon, October 1.

Both Mr. and Mrs. Howardsen are affiliated with the Berwyn studio of Anna Groff-Bryant.

Mrs. George Beaudin, Mrs. Francis X. Thale, Mrs. Arthur Boylston, Mrs. Frank Oelerich, Mrs. Charles Barton, Mrs. Walter Ballard, Mrs. Wendelin Seng, Mrs. Joseph Verhalen, Mrs. Edward Kircher, and Mrs. P. J. Cunneen will be hostesses.

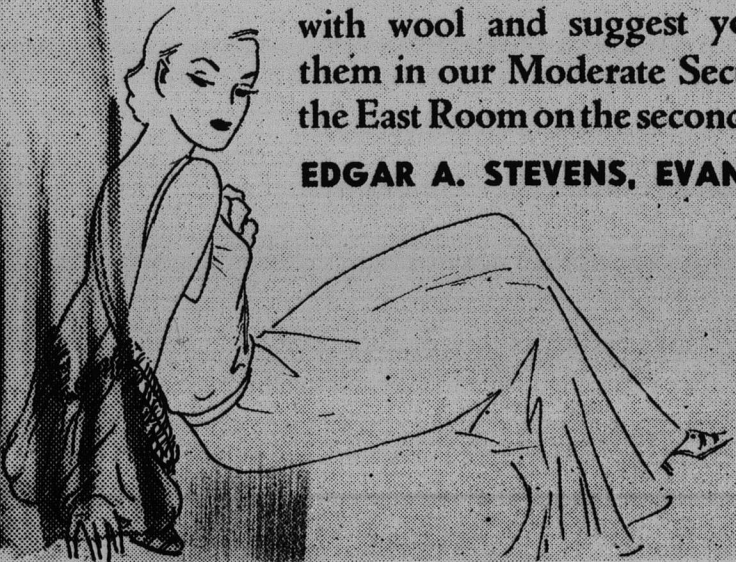


14.95

**Stevens of Evanston**  
The Shopping Center of  
Fashion-wise Women

**Velvets . . .** we have an interesting collection of them, presenting every glamorous new aspect of today's most popular fabric. For formal wear you will find dresses that rely on the material to achieve elegance and formality. For dressy day wear there are simple little frocks featuring draped sleeves, tailored collars and gold button trims. In a group for sport and day wear we have included velveteens combined with wool and suggest you see them in our Moderate Section in the East Room on the second floor.

**EDGAR A. STEVENS, EVANSTON**



## Artcraft Magic Fit SILK STOCKINGS

The hose that is sensationally sweeping the country. They're new arrivals at Stevens and embody features that fashion-wise women will appreciate.

### ARTCRAFT 1.00 HOSE

A 4-thread chiffon, of a scientifically soaked and twisted, snag-resisting strong yarn that's dull, clear and soft in texture. Featuring: a heavy all silk welt with Hemlock stoprun . . . a run-preventing heel seal . . . and a reinforced all silk foot, heel and toe.

3 Pairs 2.85

Pair 1.00

### ARTCRAFT 1.35 AND 1.65 HOSE

Here's a 2, 3 or 4-thread chiffon whose many features eliminate all possibility of a short life yet give you a hose that for sheer elegance is unsurpassed. They are made of a twisted, snag-resisting dull clear, soft yarn. And to give long life feature: all silk elastic fitted welt with triple lace Hemlocks . . . run-preventing Toe Seal and Heel Seal . . . fitted and reinforced all silk foot, heel and toe.

3 Pairs 3.85 and 4.70

Pair 1.35 and 1.65

### ARTCRAFT "SHORTS" AND "LONGS"

At last a hose that is individually proportioned for every type. For the short and slender there is a slim hose just 28 inches long. Sizes 8 to 9½. For those that are tall there is a hose 33½ to 34½ inches long, in sizes 9½ to 11. If you have trouble getting the right fit, try Artcraft.

3 Pairs 3.85

Pair 1.35

As to shade . . . Artcraft enjoys a nation-wide reputation for color leadership. The new shades: Tunis, Zombie, Congo, Vapor, Wizard, Totem and Continental

**EDGAR A. STEVENS, Evanston**



10.95

7.95