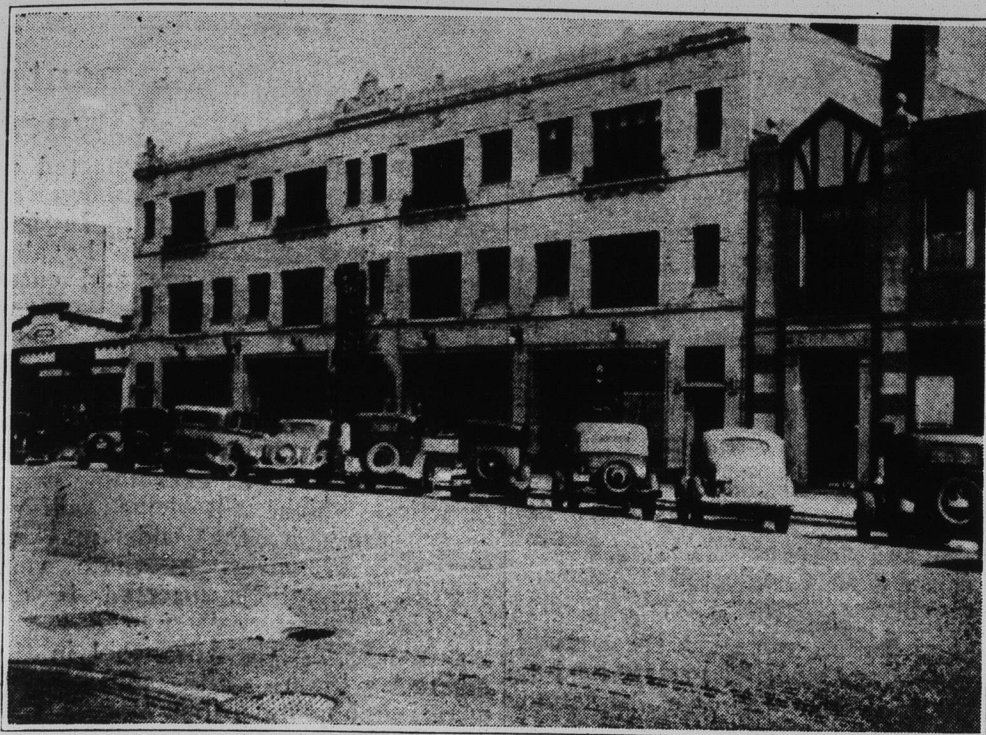


## SOLD TO FIELD ESTATE



The Nelson building at 1129-1135 Central avenue, reported to have been sold on Friday of last week. It is one of the more modern store and apartment buildings of Wilmette, having been erected about twelve years ago by David Nelson, who has remained its owner until now. It contains five stores, a restaurant and 16 apartments. It is rumored that the purchaser is the Estate of Marshall Field.

## Report Shows Low Rates Paid Here for Electricity

Residential users of electricity in Wilmette pay the Public Service Company of Northern Illinois a rate that is considerably lower than that charged by other Illinois companies serving towns of similar size, according to a report just released by the electric rate survey division of the Federal Power commission. The Illinois report, one of a series covering every state in the union, shows customers' bills for various quantities of electricity for every incorporated community in the state. To make comparisons easy, tables are included showing the ranking of customers' bills from low to high for groups of cities of different population classifications. In the population group of 10,000 to 25,000, in which Wilmette is included, the government report lists 34 Illinois cities. For a consumption of 25 kilowatt hours per month, Public Service company bills are ranked third lowest in the state. For 100 kilowatt hours, local rates are fourth lowest and for 250 kilowatt hour customers, local rates are the second lowest. This tabulation shows that of the 34 Illinois cities within the 10,000 to 25,000 population range, only one offers a lower rate for 25, 100 and 250 kilowatt hours consumption than local residents pay.

### Wide Range of Rates

The government report shows a rather wide range of rates in this state. The range of bills for 25 kilowatt hours is from \$1.50 to \$2.18 with Wilmette at \$1.70, for 100 kilowatt hours from \$3.81 to \$5.60, Public Service company being \$4.68, and for 250 kilowatt hours, the range is from \$6.81 to \$10.63, local users paying \$7.68. Commenting on these differentials, the Federal Power commission states "Availability of fuel resources and accessibility of water power go far, in some instances, to explain differences in rate levels. Geographic and economic conditions have a marked influence, as do the varying tax policies of the several states and communities. Density of population, seasonal requirements, presence or

absence of large industries, variations in purchasing power of the people, and even climatic conditions may give rise to rate differences not otherwise explainable. Over such variables the utility companies may have little or no control."

### Independently Operated

The report further designates whether the electrical energy to a city is supplied by an independent company, controlled by a holding company or by a municipal plant. Only six companies in the Illinois report were shown as being independently operated and Public Service company is one of that number. Claims of municipal ownership advocates that city ownership and operation of electricity supply means lower rates are definitely spiked by the report which shows that the only municipal plant city in the 10,000 to 25,000 population class does not have lower rates than Public Service company.

An earlier report issued by the Federal Power commission which presented rates for all the larger cities throughout the country shows that the rates applying in Wilmette are even lower than those charged in some of the largest cities of the United States. For instance local residential users pay less than customers of the same type in New York City, St. Paul, Toledo, Salt Lake City, New Orleans and many other cities.

### GUESTS DEPART

Miss Jane Ovitz of Sycamore, Ill., and Miss Helen Held of Lacon, Ill., left Monday after a visit with Miss Caroline Clark of 620 Forest avenue. The girls were classmates at Monticello.

Mr. and Mrs. Mathew Thomson, 225 Sixteenth street, returned last Thursday from a two weeks' motor trip in the east visiting Washington, Atlantic City, New York, and other points.

Doris and Dick Lechler, 210 Fifth street, are visiting their grandparents, Mr. and Mrs. E. Lechler of Wilmette at their summer place at Muskrat Lake, Mich., for ten days.

## A LITTLE AHEAD to serve you better...

● Lloyd Hollister Inc. is located in the heart of the north shore, acknowledged a unique sales area.

For many years we have served the commercial printing needs of people who live and do business here. They are discriminating people with demands above the average.

We are in constant touch with nearly every one of them through our publications, WILMETTE LIFE, WINNETKA TALK and GLENCOE NEWS and our close association with the EVANSTON REVIEW and other north shore papers.

Feeling the pulse of the north shore, we are always alert to every change in the demands of the people. Isn't it logical that serving this above-the-average area places us just a little ahead of other organizations to solve your printing problem?

It won't cost you any more to enjoy this "head start" . . . and with our help, the chances are your work will cost less!



## Lloyd Hollister Inc.

Printers · Publishers · Engravers  
1232 Central Avenue, Wilmette

Sheldrake 1216 · Wilmette 4300 · Winnetka 2000 · Greenleaf 4300



## Greatest Golfing Value in all Chicagoland!

Here's one of the pleasant things that Old Man Depression put in your lap. Full country club privileges on one of the most beautiful courses in America on the shores of picturesque Crystal Lake—only 40 miles from Chicago—at a tiny fraction of what the yearly dues were to those who paid tremendous sums for membership.

### Entire Season With Full Country Club Privileges \$30

The course is 6,724 yards long with a par of 72—strictly championship throughout. Over \$100,000.00 was spent on course construction alone. 100-room hotel in connection, rates from \$2 daily.

### Unusual Tournament Features

Special inducements to tournaments. Close to Chicago with C. N. W. R. transportation. Only a limited number of memberships offered at only \$30. — Write NOW!

JOHN DAEHLER  
Manager.



# CRYSTAL LAKE

## Country Club

CRYSTAL LAKE · ILLINOIS