

## VISITS IN VILLAGE

Miss Jane Flavin of Palos Park arrived in Wilmette last week to visit the William J. Spillanes of 724 Ashland avenue. Miss Flavin, a niece of Mrs. Spillane, will make a visit of three weeks here.

Mr. and Mrs. Albert E. Hall, 1023 Greenwood avenue, have a little daughter, Carolyn Ann.



Your  
Appearance

Our ability to make glasses inconspicuous and pleasingly becoming is one of the reasons people prefer Almer Coe Service.

**Almer Coe & Company**  
OPTICIANS

105 N. Wabash Ave.  
78 E. Jackson Blvd. 18 So. La Salle St.  
1645 Orrington Ave. Evanston

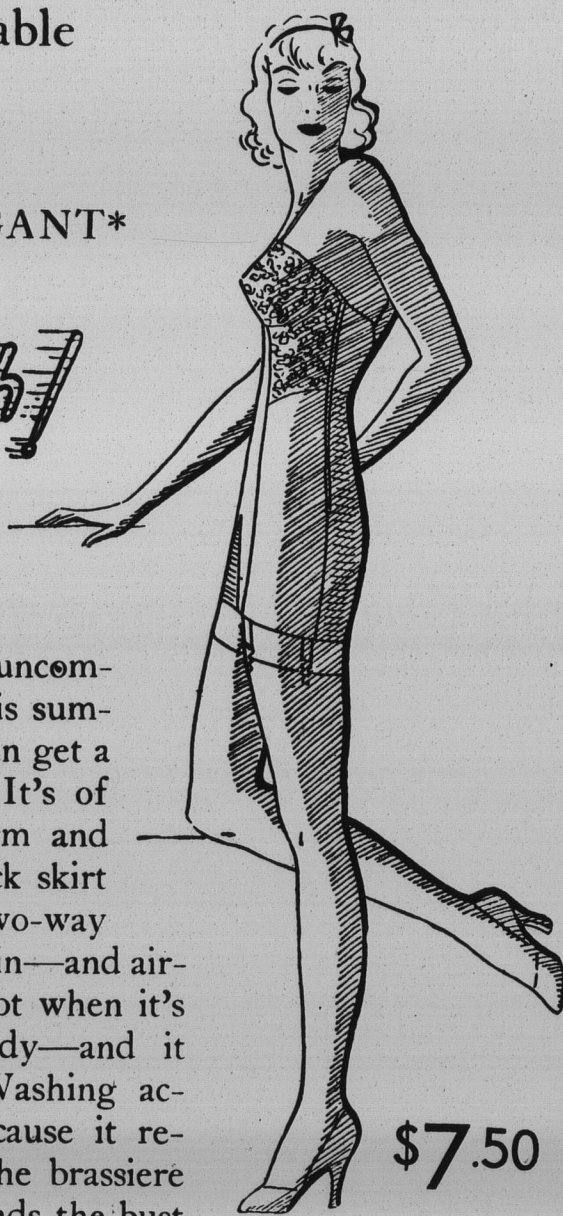
Cool — Comfortable  
and —

it stays in place!

SHADOW\* LE GANT\*

of

Youth



Don't wear a hot and uncomfortable foundation this summer! Not when you can get a Shadow\* Le Gant\*! It's of airy, breezy voile—firm and strong. The whole back skirt is of firm, woven two-way stretch Lastex, tissue thin—and air-cooled! Lastex isn't hot when it's worn next to the body—and it wears marvelously. Washing actually improves it, because it removes perspiration. The brassiere section uplifts and rounds the bust—it's of lace, net-lined.

\$7.50

Corset Section—Second Floor

**LORD'S**

Fountain  
Square

## PRESIDENT KINNE AT BALL SEASON OPENING

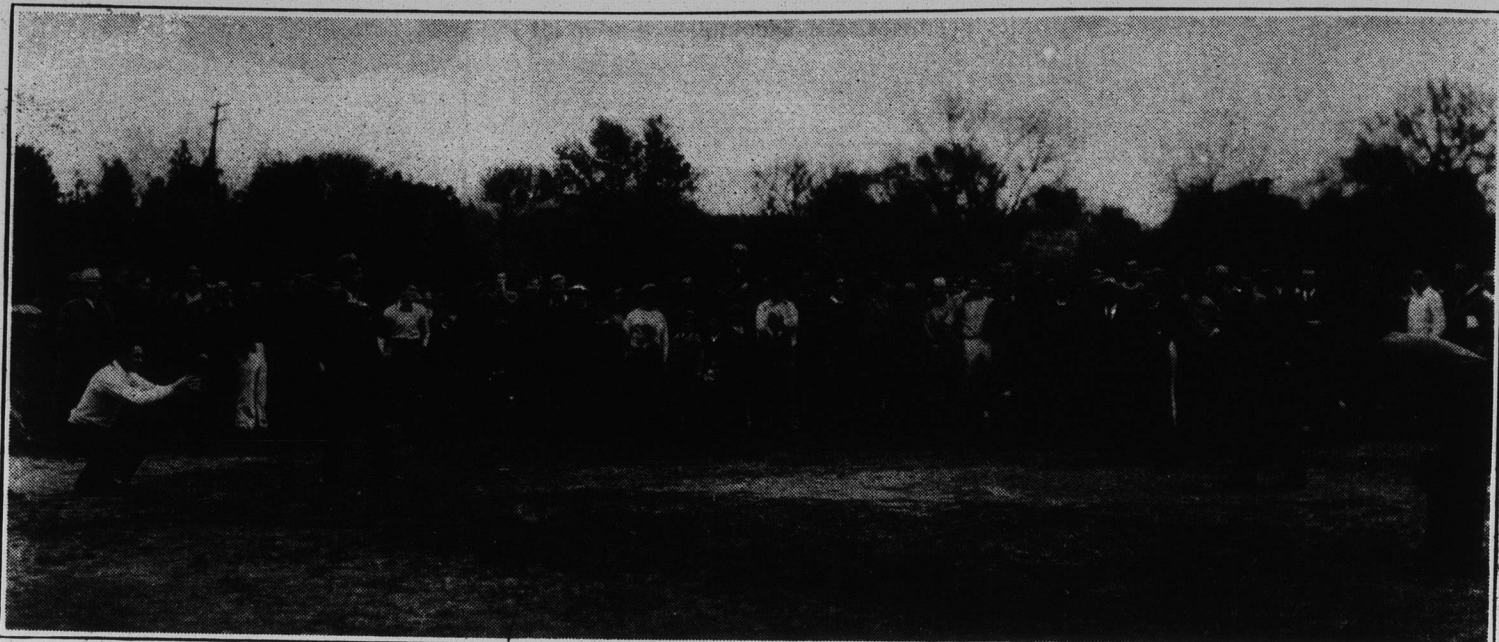


Photo by Mathew Francis  
Wilmette's Twilight Soft Ball leagues, sponsored by the Recreation board, got under way Monday of this week with ceremony when Village President Harry C. Kinne tossed the first ball. Ready to sock the first pitch is Village Trustee James Hoffman, while the receiver, in case Mr. Hoffman misses, is Bernard S. Black.

## LUNCHEON HOSTESS

Miss Virginia Belt, 202 Abingdon avenue, Kenilworth, will be hostess at luncheon Friday to her bridge club.

## BLEND A INC.

936 North Michigan Ave.  
Opp. Drake Hotel Del. 4477  
GOWNS - WRAPS  
SUITS and TAILORED DRESSES  
SPORT FROCKS  
Tailored to Measure  
Now Showing Latest Modes

## GUIDE-LECTURE TOURS

"Types of Mankind" at 3 p. m. on Monday, May 27, will be the subject of the first of next week's guide-lecture tours for the general public at Field Museum of Natural History. On other days at the same hour subjects will be: Tuesday, "Botany Exhibits"; Wednesday, "Musical Instruments," and Friday, "Animal Ecology." These tours are open to all museum visitors, and no charge is made for them. Parties assemble inside the north entrance. There will be no tour on Thursday, May 30, on account of the Memorial Day holiday. However, the museum will be open to visitors that day during the usual hours from 9 to 6 o'clock.

Mr. and Mrs. Walter Noble Gillett and daughter, Edith, motored to Indiana to spend the week-end, Mr. Gillett going to Indianapolis, and Mrs. Gillett and Edith to Turkey Run.

OUR NEW FUR VAULT STORAGE  
AT REASONABLE RATES

**EVANSTON  
FIREPROOF WAREHOUSE**

Uni. 0091

Wil. 914

MALLINCKRODT  
NEWS

(Catholic High School for Girls  
in Wilmette)

Final preparations are being made by the Mallinckrodt Mothers' club for the annual May Social which will be held at the North Shore hotel Friday, May 24. While their elders will be attracted to the card playing groups, the younger folks will spend the evening dancing in the adjoining ballroom. Beautiful and unique prizes will be offered.

The special offer of the Baltimore and Ohio railroad to those who wished to join the four-day student tour to Washington was accepted by Clemence Bisson and Lois Schabeck, both seniors of Mallinckrodt. They, together with more than one hundred students from Chicagoland's Catholic schools, left Chicago on the afternoon of May 5 and returned the following Thursday. The sight-seeing tour included such places as the Senate and the House, the Naval station, the National shrine, and numerous places of historic interest.

## Bake Shop Specials

Friday and Saturday Specials!

DANISH PRUNE-FILLED  
COFFEE CAKE ..... 23c

ASSORTED LAYER CAKES  
(3 layers), each ..... 39c

FRUIT PIES ..... 23c  
each

ASSORTED BUTTER  
COOKIES, ..... 21c  
lb.

Friday Special

JELLIED SALMON SALAD ..... 6c

Monday and Tuesday Specials

SILVER PECAN LOAF ..... 19c

PINEAPPLE UPSIDE DOWN  
CAKE ..... 27c

Bake Shop—Street Floor

**WIEBOLDT'S-EVANSTON**  
On Davis Street Wilmette 1100