

## Accord Artists Praise for Opera Recital at Club

By VERA MCDERMID

Massenet's lovely opera, "Manon," was presented in "streamline" fashion, sans scenery and sans costumes, by three accomplished and finished artists on Wednesday morning of last week in Wilmette.

The artists were Rutheda L. Pretzel, pianist, Lolita Bertling, soprano, and John Eliot, tenor, and their audience composed a large membership of the Woman's Club of Wilmette. In her lecture recitals Miss Pretzel's procedure is to give a resumé of the story of the opera and then to translate each aria before it is sung. She also plays incidental parts of the opera that are of interest, and, of course, accompanies the singers. Miss Bertling's interpretation of "Manon" last week was just about perfect. Her voice has improved another two-fold since she last appeared on the north shore, and it was unusually clear and firm whether she let it out completely and fully, or she reached the highest note of her range. However, she will need to improve her "pianissimos," which are not, as yet, firm or distinct. Her acting is natural and spontaneous, and on the operatic stage she would make a charming and delightful Manon Lescaut. Another role in which Miss Bertling would be very successful, I am sure, is Mimi of "La Bohème." In most instances Miss Bertling's French diction is clear and quite correct, but, again, when she is singing quietly a spark of self-consciousness seems to come over her and she runs her words together and blurs her notes, a minor imperfection that may be easily corrected.

In his excerpts of Des Grieux' arias, Mr. Eliot gave his listeners a real treat. His voice has power and range as well as lyric and dramatic qualities, and he sang well in both the solo and the duet selections. However, he seems to be more at home on the concert stage than in an operatic role. The popular aria, "Le Reve," (the dream) was a joy to hear, and one of the highlights of the recital was the charming duet, "On l'appelle Manon" (My name is Manon). All of Miss Bertling's solos were so excellently

given, and are, in themselves, so charming that it would be difficult to single out any certain one as being outstanding, but one of the favorites, of course, is "Adieu, Notre Petite Table" (Farewell, Our Little Table). Miss Pretzel's accompaniments greatly enhanced the beauty of the recital and brought out particularly the pathos and poetic charm of the opera.

## North Shore Sisterhood to Meet February 18

The next meeting of the North Shore Congregation Israel Sisterhood will be held at the Temple in Glencoe on Monday, February 18.

The meeting will open at 9 o'clock with sewing for hospitals; there will be a box luncheon at noon, followed by the business meeting and program.

Josephine Schoen Rubel, Sisterhood member, who is associated with the Allen Spencer Music club of Chicago, will present a program of piano music with a background of musical conversations explaining parallels and contrasts between the various composers represented in the selections as well as characteristics and historical facts. Her program will include selections by Brahms, Glazounow, Debussy.

Following the program, the Highland Park members will be hostesses at an informal tea. Everyone is cordially invited to attend.

## Brownson Circle to Consider Government

Mrs. Bertrand W. Evans, chairman of American citizenship, will have charge of the Brownson Circle program on Monday, February 18. The Rev. Samuel Know Wilson, S. J., president of Loyola university, will talk on "Modern Trends in Government." Vocal selections are to be sung by Edward Stack, baritone, the literature discussions led by Mrs. Fred M. Clarke during luncheon at 12:30. The business meeting will be called at 2. Hostesses for the afternoon will be Mrs. Edward Agnew, assisted by Mrs. Virgil Day, Mrs. A. M. Johnson, Mrs. J. R. Warnock, and Mrs. Thomas J. Byrne.

## Add to Patron List for Recital by Negro Soprano

Interest has continued to mount in the coming recital next Monday evening of Cecelia Carter, who is to be presented in a program of negro spirituals at the Winnetka Community House by Rutheda L. Pretzel.

Added to the long list of patronesses published last week are Mrs. Arthur Blackwood, Miss Helen Hedges, Mrs. Ralph Horween, Mrs. Francis Lackner, Mrs. S. George Lee, Mrs. Warner Nelson, Mrs. Dwight C. Orcutt, Mrs. Oliver S. Picher, Mrs. George J. Pope, Mrs. Warner Robinson, Mrs. Ralph Sargent, and Mrs. Charles Strong.

Also on the list are Walter Armbruster, Earl Armil, George Seaberg, Dr. James Turner, and Lawrence Yingling.

## Musical Feb. 17 Will Aid Settlement School

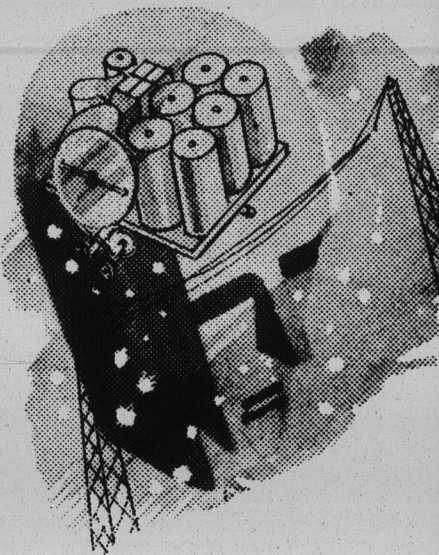
Mrs. John R. Pontius of 770 Hill road, Winnetka, is opening her home Sunday, February 17, for an affair looked forward to annually by the Chicago Alumnae club of Mu Phi Epsilon. This will be a musicale and tea at which prominent Chicago artists will appear, and will be given for the benefit of the Mu Phi Epsilon Settlement School of Music at Gads Hill center.



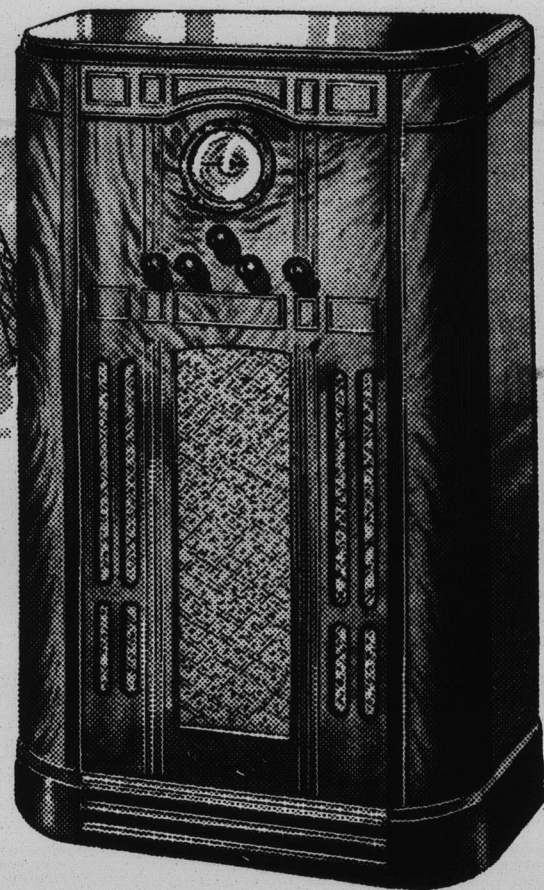
THE SHOE THAT  
PROTECTS YOUR  
CHILDREN'S  
GROWING FEET!

1608 Chicago Ave., Evanston

## THE EVANSTON STORE MARSHALL FIELD & COMPANY



**\$89.95**  
Installed



Field's Evanston Store Presents

## RCA Victor Model 226

See and Hear This Latest Development  
in Perfect Reception

RCA Victor has reached new heights in this brand new all-wave radio. Beautifully designed cabinet and clear reception make Model 226 satisfying even to the most discriminating. Be sure to see and hear this instrument—you'll be amazed when you remember that the price is only . . . \$89.95 installed.

Model 128 is the same mechanism in a table size **\$69.95** (with short wave aerial) completely installed

Ask about our liberal allowance for your old radio—and ask for a home demonstration if you wish.

ON THE FIFTH FLOOR

"Clean as a Whistle"

SAYS MR. O.L.K., OF NEW YORK CITY  
AFTER A TRIP ON THE  
AIR CONDITIONED

**400**

FASTEST TRAIN ON THE AMERICAN CONTINENT

**400 MILES—400 MINUTES**

Hours faster. Leave Chicago or Milwaukee late afternoon—arrive Twin Cities same evening. Speed—Comfort—Safety. Big, substantial, all-steel cars—luxurious appointments—perfect roadbed. Passengers from and to North Shore towns make close connections with the "400" at Milwaukee.

Completely Air-Conditioned

For information, tickets, reservations

See Your Local C. & N. W.

Ticket Agent

2251A

**CHICAGO & NORTHWESTERN RY.**

NO EXTRA FARE

between  
**CHICAGO**  
and the **TWIN CITIES**  
**ST. PAUL-MINNEAPOLIS**  
via **MILWAUKEE**

Lv. Chicago daily at 3:30pm  
Lv. Milwaukee daily at 4:55pm