

ONE OF SEVEN SKOKIE LAGOONS IS FINISHED

First Year of Work in Marsh Area Completed

While the deficiency in rainfall since the first of the year has proved detrimental to crops and vegetation, a vast amount of work was accomplished in the Skokie drainage and development project as a result of the prolonged dry spell.

Since the beginning of the work just one year ago the Skokie has been unusually dry, a condition which has permitted the 2,500 men working there to continue uninterruptedly the construction of the seven large artificial lakes, the dikes, miles of diversion and connection ditches, and the widening and deepening of the river outlet from Willow road south.

A most gratifying record is indicated in the progress reports of the engineers in charge. There is yet a vast amount of labor to be done, but, with the preliminary work accomplished under the favorable weather conditions, the flood water outlets constructed will in a large measure, prevent future delay and handicap in case of a greater amount of rainfall.

The marked deficiency in precipitation also proved most advantageous in the matter of establishing camp for the army of workers. This was true in regard to the first or temporary tent camp at Skokie highway and Willow road, and later in the building of the permanent Skokie Valley camp on forest preserve grounds at Glenview and Harms roads.

Park Service Directs Project

All of the improvement work in the Skokie is being done by the members of the Civilian Conservation corps, under the direction of the National Park service, which, in reality, made the present reclamation of the Skokie possible. Hugh Kent is the chief superintendent, in charge. The development has been designed by the engineering corps to facilitate the natural drainage provisions.

For instance, the dikes are not straight, "cut and dried" affairs, but are constructed at various elevations to simulate a natural rolling topography for the more than 800 acres involved.

Lagoon No. 1 Finished

Lagoon No. 1, located just north of the Willow road bridge and comprising approximately 15 acres, is complete. The original surface elevation at lagoon No. 1 sight, it is explained, was about 622 feet above sea level, whereas the bottom of the lagoon is 612.5 feet and the normal water level will be 617.5 feet.

The minimum height of the dikes will be 629 feet, and the highest points, which are along the east dike between lagoons No. 1 and No. 2, are 640 feet above sea level.

Working On Lagoon No. 2

Work is now in progress on lagoon No. 2, which will be somewhat smaller than No. 1. There will be a total of seven lagoons, the largest of which will comprise 29 acres.

Heavy machinery is now being used in the construction of No. 2 lagoon and the connecting channels between lagoons 1 and 2.

Diversion ditches on either side of the project are practically completed from Willow road to Dundee road, and the opening of the channel of the river south from Willow road to



Photo by William B. Mathews

This photo was taken from a point at the south side of Butler's pond, looking south. It shows the east diversion channel (along the west side of Skokie Playfield) before any work was done. Note the dense growth of weeds and water plants.



Photo by William B. Mathews

This picture was taken from the same relative position as the one from which the accompanying cut was made, but after the channel, or east diversion ditch, was cleared, deepened and widened. Finishing work on the top of the banks had not been done when the picture was taken. The irregularities of the original channel were followed in building the new ditch in order to add interest and to avoid the rigid appearance of a channel, as well as the unnecessary moving of large quantities of earth.

Lake avenue is about 70 per cent completed.

139 Acres of Lagoons

The seven lagoons in the drainage project will comprise about 139 acres, and will have a total storage capacity of something like 334,540,800 gallons of water. An immense flood plane will be constructed in connection with each lagoon, which may be covered to a depth of six feet, thus caring for more millions of gallons of water in excessive flood periods, while great volumes of water will be carried off quickly by the miles of diversion ditches on either side of the lagoon system.

Hundreds of trees of numerous varieties, many of them from 8 to 10 inches in diameter and 20 feet high, have been planted in the area, and a great deal of attention is now being devoted to getting them started.

Invite Public to Hear Dr. Homer C. Boblitt

On Monday evening, July 2, at 8 o'clock, the Highland Park chapter of the Paul Reveres will hold an open air meeting on the lawn at 340 S. Green Bay road, Highland Park. The principal speaker will be Dr. Homer C. Boblitt of Morgan Park, his subject being "Red Russia in Action." Dr. Boblitt is said to be eminently qualified to treat this subject, as he was in Russia during the revolution and saw the action.

CHRISTIAN SCIENCE SERVICES

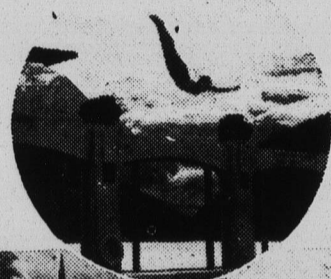
"Christian Science" will be the subject at the services in the First Church of Christ, Scientist, in Wilmette Sunday morning, July 1, at 11 o'clock, held in the edifice at 1003 Central avenue. Sunday school convenes at 9:45 o'clock.

Banff and CANADIAN ROCKIES!



Chateau Lake Louise and a view from the lawn, looking back to the mountains

Diving is a real sport in the tempered pool at the edge of lovely Lake Louise



Banff Springs Hotel as seen from the eighteenth green of its famous mile-high golf course

Come Up and Stay Awhile!

INSPIRING scenery—zestful Alpine air—snow-topped mountains—so many things to do—SKYLINE RIDING—HIKING on the roof of the world—TENNIS—world-famous GOLF—DANCING—or just loaf in glorious ozone-filled, sun-laden air. The greatest of all vacations at the lowest of all prices. Get the facts, now.

Alluring ALL-EXPENSE TOURS

LOW-COST VACATIONS

4 DAYS... 1 day at Banff, 2 days at Lake Louise, 1 day at Emerald Lake. All Expenses... \$50
5 DAYS... 1 day at Banff, 2 days at Lake Louise, 2 days at Emerald Lake. All Expenses... \$60
6 DAYS... 2 days at Banff, 2 days at Lake Louise, 2 days at Emerald Lake. All Expenses... \$70

Tours Begin at Banff or Field

All are first class. All include transportation from Banff to Field (or Field to Banff), lodging, meals, 126 miles of motoring. Add rail fare to Banff (or Field). Stop-overs on payment of following daily rates for Room and Meals: Banff Springs Hotel—\$9.00; Chateau Lake Louise—\$8.00; Emerald Lake Chalet—\$7.00.

Add Railroad Fare From Your City

Hotels all close September 10. Low Summer Round Trip Rail Fares (Return Limit October 31) to Banff, North Pacific Coast, California, Alaska. Also Special Short-Limit Round Trip Fares.

Canadian Pacific Hotels

THOS. J. WALL, General Agent
71 East Jackson Blvd. (Straus Bldg.), Chicago
Telephone: WABash 1904