

# Smithfield

1567 Sherman Avenue South of Fountain Square  
**FOODS**  
 PHONES: Davis 7700  
 Wino. 3211-12  
 Reg. Pk. 8039  
 Wil. 802-03

Prices for Thurs., Fri. and Sat.

**VINEGAR.** Monarch. Cider or White. Qt. 18c 2 for 35c  
**ORANGE MARMALADE.** 16-oz. Jar 25c 3 for 69c  
**STRAWBERRY PRESERVES.** New Pack. 16-oz. Jar 29c 3 for 79c  
**OLIVES.** Ripe Jumbo. Pt. tin 29c 3 for 79c  
**CAKE FLOUR.** Monarch. 44-oz. pkg. 25c  
**BILTMORE CHUTNEY.** Just the thing to top off that steak, chop, roast, salad, sandwich, cold cuts, etc. 39c

**BUTTER**

Smithfield's Best Roll, 2 lbs. 55c

lb. 28c

**EGGS**

Fresh Eggs Extra Large Doz. 27c

2 doz. 52c

Strictly Fresh Eggs Doz. 23c

2 doz. 45c



## PEACOCK HAMS

Or Swift's Premium 12 to 14-lbs. average. Famous for real country smoked flavor and cured to perfection. Lb. 19½c

**PIG HAMS.** Fresh shoulder, average 5 to 7-lbs., lb. 10c

**GROUND BEEF.** Fresh ground as ordered. Lb. 15c 2 lbs. 25c

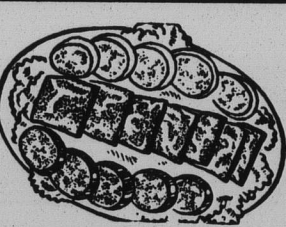
**CALVES' LIVER.** Genuine—always fresh at Smithfield's. lb. 39c

**BEEF POT ROAST**

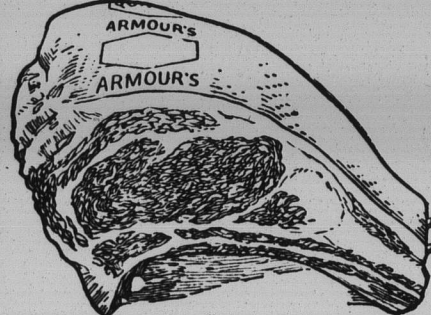
Very tender and juicy. Select cuts. lb. 18c lb. 15c

## SAUSAGE DEPARTMENT

Assorted Cold Meats. Fresh sliced. lb. 32c  
 Frankfurts, very best grade. lb. 19c  
 Pork Sausage, freshly made, little links. lb. 19c  
 Summer Sausage, very best quality. lb. 27c  
 Bologna Sausage, New York style. lb. 24c



## RIB ROAST BEEF



Standing, 6th and 7th rib—a roast you'll enjoy. This choice rib roast, cut from top grade native beef—tender and flavorful. Very best small cuts. lb. 27c

lb. 17c

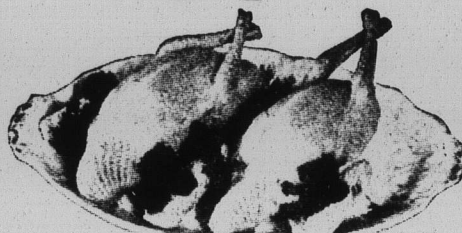
## MEAT DEPARTMENT

Always the Best at Lowest Prices

Just Received the First Shipment of

WAPSIE VALLEY

## 1934 BROILERS



Need we say more about this wonderful brand? The name speaks for itself. Dry picked, averaging about 2½ pounds each.

2 for \$1.89

## VEAL SPECIALS

For this special sale—you'll have the opportunity to enjoy VEAL at its best—the select of the market. Milk-fed—fresh cut.

LEG OF VEAL. 5 to 7-lbs. lb. 17c

VEAL ROAST. Boneless rolled. lb. 17c

VEAL ROAST. Shoulder. lb. 12c

POCKET VEAL ROAST. lb. 10c

VEAL CHOPS. Shoulder. lb. 14c

VEAL STEW. Boneless. lb. 15c

## LAMB ROAST

What can be more delightful than a genuine 1934 Spring Lamb Roast. Rolled and boneless—fine when sliced cold. No waste, all lb. 24c

## STEAK SPECIALS

If you have never tried our luscious, tender and flavorful Steaks—this is your chance.

PRIME SIRLOIN STEAK. Lb. 35c

PRIME PORTERHOUSE. Lb. 45c

PRIME SWISS STEAK. Lb. 27c

PRIME BONELESS CUBE STEAK. Lb. 35c

## CORNER BEEF

Smithfield's special sugar cured, boneless brisket. lb. 19c



FRESH FISH

Genuine Lake Superior White Fish. lb. 27c  
 Halibut Steak, fresh sliced. lb. 29c  
 Haddock, fresh, no bones or waste. lb. 35c  
 Genuine Fillet Sole, fresh—no bones or waste. lb. 45c  
 Trout, always fresh, 1½ to 4-lbs. lb. 23c  
 Herring, fresh. 3-lbs. 25c

## RIB ROAST BEEF

Boneless rolled—cut from best and select native beef—no waste or bones, all meat, tender and juicy.

lb. 29c



## LET US NOT FORGET QUALITY

In the mad rush for bargains, it is well to think twice before final selection. Prices do not always indicate expected values. Thrifty shoppers compare quality. Put SMITHFIELD'S to the test. Quality is the cheapest in the long run.

## GROCERY SPECIALS

**RUM AND LASSES CANDY.** 1-lb. pkg. 29c  
**SARDINES.** Monarch. Extra small, in pure olive oil. 2 cans 29c  
**CORNER BEEF.** Monarch. 12-oz. 2 cans 39c  
**YEAST.** Fleischmann's. cake 3c  
**WHOLE WHEAT THINSIES.** Or Cheese Thins. 2 pkgs. 25c  
**TEA.** For Iced Tea. 1 lb. 65c ½ lb. 35c  
**OVALTINE.** Large can 69c small 39c  
**JOYZ MATE.** The vitalizing drink from South America. ¼-lb. 29c 1 lb. 98c  
**HOLLYWOOD DIET.** Stardom. Reduce without harm. can 98c  
**VANILLA.** Monarch. Full strength. 4-oz. bottle 49c

**TOILET PAPER.** Scott Tissue. 10 for 79c

**SOAP.** Ivory. Large cake. 4 for 35c

**GRAPE JUICE.** Monarch. Qt. 35c 3 for 1

**BUTTER COOKIES.** Salerno. 1-lb. pkg. 18c

**GRAHAM CRACKERS.** Salerno. 1-lb. pkg. 18c 2 for 32c

**PICKLES.** Nancy Hank's. The old fashioned cucumber kind. jar 20c

**SOAP.** Camay. 6 for 29c

**CATSUP.** Monarch. Large bottle 2 for 39c

**CORN FLAKES.** Miller's. Fresh and crispy. Lge. 2 for 25c small 3 for 25c

**SUGAR.** Brown or Powder. 3 pkgs. 23c

## COFFEE

Park Avenue Club



3 lbs. 79c

**C. & H. PURE CANE SUGAR.** 10 lbs. 49c

**CLEAN QUICK.** The large economy pkg. 5-lb. pkg. 25c

**COOKING OIL.** Mazola. qt. tin 29c

## COFFEE

Hills Bros.

2-lb. can 63c

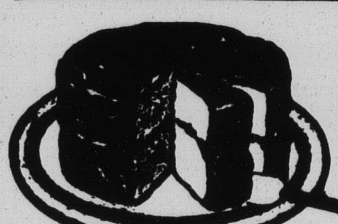


**COOKING OIL.** Wesson. qt. tin 35c

# WEEK-END Specials

## BAKING DEPARTMENT

Bakery Goods that are Baked Right



**LADY BALTIMORE CAKE.** Two snowy white layers filled with butter cream and iced with real Lady Baltimore icing. Each 39c

**ALMOND T. RINGS.** A rich danish mix, filled and topped with almonds. Small family size. Each 25c

**SANDWICH and FINGER ROLLS.** So handy for picnic lunches. Doz. 18c 2 doz. 29c



SATURDAY ONLY

**WHITE BREAD.** Smithfield's finest quality white bread. Two full loaves for 15c

**FANCY BREAD.** Cinnamon, Date and Nut, or Whole Wheat Nut Bread. Loaf 15c

**DAINTY WAFERS.** A large assortment of butter wafers and ice box cookies. Just the thing to serve for a Tea. Lb. 49c

SCOTCH GOODS

English Muffins Ea. 5c, 6 for 25c Scotch Oat Cakes. doz. 25c  
 Scotch Scones. doz. 25c Scotch Short Breads, 10c & 15c

**APPLE PIE.** Two deep rich flaky crusts, well filled with apples, seasoned with spice and table butter. Large size. Each 27c

**SALTED NUTS.** Assorted Salted Nuts. Lb. 59c



**SPARKLING WATER.** Plus deposit 12 bottles \$1.39

**GINGER ALE.** Pale Dry, Root Beer, Lime Rickey. Doz. 95c 3 large bottles 25c

(Plus Deposit)

**ROOT BEER EXTRACT.** Will make 5 gallons of beverage. 1 bottle 15c

**BOVIL.** Highly concentrated beef extract, for beverages, sandwiches, flavoring and many other uses. 2 oz. jar 49c

## FRUIT DEPARTMENT

The Best of All that the Market Affords

**ORANGES.** California Valencia's, real juicy. Doz. 35c 3 doz. \$1

**LEMONS.** Thin skin and juicy. doz. 29c

**CANTALOUPE.** Vine ripened and pre-cooled. 2 for 25c

**PLUMS.** Juicy sweet, Burbanks. large basket 59c

**BLACK RASPBERRIES.** Home grown—very fine flavor. 2 pts. 23c

**RED RASPBERRIES.** Select, full pint. 2 for 25c

## BISQUICK

Biscuits in a Jiffy

lg. pkg. 32c

## WHEATIES

2 pkgs. 23c Bowl Free

## ROYAL

GELATIN

DESSERT

All Flavors

4 pkgs. 19c

## PECAN

MEATS

Selected Halves

1 lb. 49c

## PRUNES

Large Size

2 lbs. 29c

## APRICOTS

Tree Ripened, Fine Flavor

2 lbs. 35c

## MACARONI

or SPAGHETTI

2 1-lb. pkgs. 19c

19c

19c

19c

19c

19c

19c

19c

19c

19c

19c

19c

## DELICATESSEN

Save Time and Money

## COOKED FOOD

COMPLETE DINNER, SERVES 4

4 Large delicious Chicken Croquettes  
 1 Pt. Carrots and Peas, Creamed  
 1 Pt. Combination Salad  
 8 Parkerhouse Rolls and  
 1 Pt. Sliced Peaches

ALL FOR 99c

**CHICKEN NOODLES.** Smithfield's homemade. Chock full of fresh chicken. Very delicious. Quart 55c Pint 29c

## POT PIES

These Pies are made from fresh Chicken or Beef with carrots, Peas and Mushrooms, covered with a rich pie crust.  
**CHICKEN.** 4 portion, each 65c—2 portion, each 35c  
**BEEF.** 4 portion, each 45c—2 portion, each 25c  
 (Plus Crock deposit)

**CHOP SUEY.** Mushroom. The finest, purest made. RICE FREE. Pint 29c Quart 55c

## FRIDAY ONLY

FISH DINNER, SERVES 4

Baked Fresh Lake Trout, with lemon and tartar sauce.  
 8 Dinner Rolls  
 1 Pt. Salad, choice of 9 varieties and  
 1 Pt. Apricots

ALL FOR 99c

## CHEESE

MILD AMERICAN. lb. 19c

HERKIMER. 3-year-old New York—very snappy. lb. 39c

CAMEMBERT. Genuine imported French. Whole 69c Half 40c

SMITHFIELD SALADS. Made by our own Chef, using only the purest and freshest ingredients. 8 varieties, including 3 kinds of Potato Salad. All at Pint 19c Quart 35c

CHICKEN SALAD. pt. 69c

COMBINATION SALAD. pt. 19c

DRESSING. Smithfield's homemade. 1,000 Island Qt. 55c Pt. 29c

Mayonnaise, Qt. 45c Pt. 25c

VEGETABLES

They're Really Fresh Here

TOMATOES. Garden grown, ripe, firm tomatoes. 2 -lb. baskets 19c

LETTUCE. Crisp firm icebergs. Large size, 2 for 25c. 2 for 19c

NEW POTATOES. Louisiana's. Red select triumphs. peck 37c

CARROTS. Large bchs., fresh daily. 3 bchs. 17c

RADISHES. Home Grown, large bchs. 3 bchs. 10c