



# Accessories . . . the Small Blessings Which Fashion Counts So Very Great

## "Dead-White" Jewelry 59<sup>c</sup> and \$1

Paradoxically enough it goes far toward enlivening any Spring costume. And you'll see it everywhere this Eastertide!

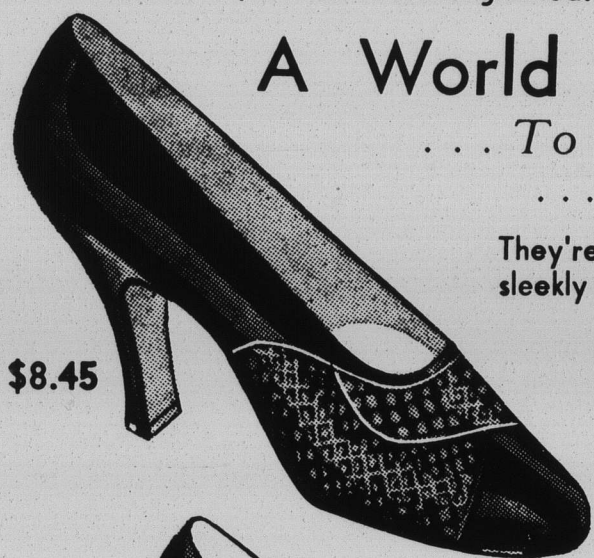
"Stunning" Is Just  
the Word for This

## Handbag \$2.98



And for all the others which comprise our vast assortment. Black and colors . . . patent, calf and grained.

## A World of Pumps ... To Wear Anywhere, ... Any Time



\$8.45

They're Colonial, or tailored, or sleekly untrimmed! They are of patent leather, of kid, of reptile or in combination. They are versatile in their complementing of the tailored, the dress or the in-between costume, and they range in price from

\$4.95 to \$8.45



\$6.95



\$4.95

There are blacks, of course, and navy and brown as well. And, oh, the comfort of knowing that your feet are fashionable . . . that your shoes are as correct as they are good-looking!

Footwear Salon—Street Floor

## Here's "Reel News" For You!

A Hollywood Autographed Neckwear  
Fashion Endorsed by Joan Marsh



\$2.98

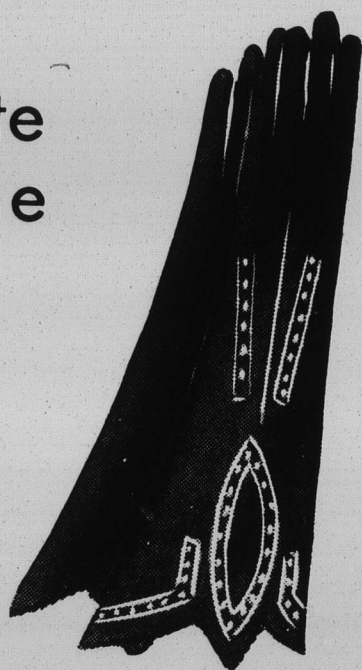
Mousseline de Soie with filmy edging nattily box-pleated and diversified by lattice-work develops this utterly enchanting neckwear. Jabots, bibs, bows . . . high and V necks . . . a couple of clever cuffed models . . . these permit a wide and delightful selection.

Other Joan Marsh models are available at \$2.25. Do see them when ensembling your Easter toggery!

## Kid Gloves Complete the Easter Costume

\$2.98

Black or navy, beige or grey or white . . . the color is a matter of choice. But kid is the leather, and effective perforations are providing unusual trimming interest.



## Easter Posies

59<sup>c</sup>

They get bigger and better . . . and these are the best yet! Snowy white single flowers . . . colorful clusters of small blooms! Flowers for coat or frock or suit . . . that never fade!



Accessories—Street Floor



# WIEBOLDT'S-EVANSTON

On Davis Street

YOU WILL FIND A CHARGE ACCOUNT A GREAT CONVENIENCE

Wilmette 1100