

GETS "RUBBER" CHECK

John Zimmer, who operates a grocery and market at 185 Prairie avenue, cashed a check last week for \$17.45 which subsequently bounced back. The check was signed by Oscar Cederquist, who is said to live in Evanston, and was proffered by one Fred Adams.

For a Real Good
MALTED MILK
or
MILK SHAKE
Stop at

Mac's
WILMETTE
confectionery
JUST WEST OF BANK
WILMETTE 5353

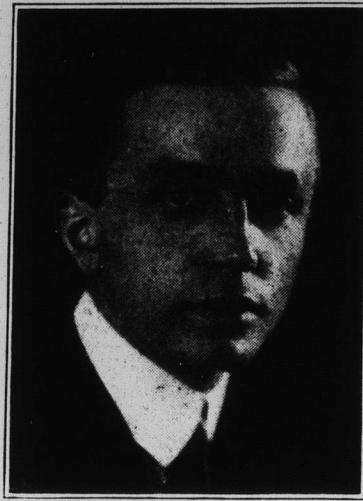
"L" Terminal Merchants
Launch Business Drive

Merchants affiliated with the "L" Terminal Business association, whose places of business are located in the Fourth street and Linden avenue commercial area, have launched an advertising campaign to thoroughly acquaint the householders of the village with the advantages in service and values to be gained by shopping in that business section. Announcements of these stores and shops will appear each week in WILMETTE LIFE and its companion early-in-the-week publication, THE WILMETTE SHOPPERS' REVIEW, which made its initial appearance Monday morning of this week.

MOTORING SOUTH

Miss Elsie Paterson of 1625 Central avenue, is leaving the latter part of this month to motor with friends to Florida. She will join a friend in Miami Beach where the two young women are to be employed in one of the hotels. Later on they hope to take a short trip to Havana. "Pat," as Miss Paterson is better known to her friends, is well known in athletic circles on the north shore, excelling in all forms of sports. She plans to return to Wilmette about the first of May.

President



Harry Dornbos, owner of the Terminal Hardware on Linden avenue has been elected president of the "L" Terminal Business association made up of merchants and Professional people whose establishments are located in the Fourth street and Linden avenue commercial area. The association is launching an intensive campaign to attract shoppers to that vicinity.

GUARDED TRAIN
BRINGS IN MILKIndependent Dealers Enjoy
Spurt of Cash and Carry
Business During Strike

In common with other communities, Wilmette felt the effects of the strike earlier this week of the members of the Pure Milk association, the organization of farmers of the Chicago "milk shed" which supplies at least 90 percent of the milk consumed in Chicago and suburbs. No regular deliveries were made since last week-end until a truce was signed and deliveries resumed on Wednesday, and in consequence many tables were minus the usual supply. Independent dealers enjoyed a tremendous spurt in the cash and carry business, and in some way managed to secure a sufficient quantity, especially of cream, to keep going.

Violence broke out Tuesday when strike sympathizers hijacked the truck of John Dix, 115 Sixteenth street, who operates an independent route. The truck was taken away from him at Prairie avenue and Catalpa place at noon, the machine and contents being drenched with kerosene, and the truck driven to Simpson street and McCormick boulevard, where it was recovered later.

Two officers of the state police force are guarding the depot of the Wisconsin Farmer's Dairy Products store in No Man's Land. Up to this time no disturbance has been reported from that point.

Wednesday morning at about 9 o'clock a train on the Chicago and North Western railroad, composed of five freight cars and one passenger car was switched to a siding in Wilmette and several truckloads of milk consigned to Phil McLaughlin, were unloaded under protection of Wilmette police and a large number of armed guards who accompanied the train. The McLaughlin trucks were escorted by the local police to the village limits at Central Park avenue and Isabella street, on their way to Niles Center. After unloading the McLaughlin consignment the train departed toward Chicago. Another car had been unloaded at this point Tuesday morning.

"Learn many things but know one thing well"

Motto of General Upholstery

Our workers are skilled in their trade, and their knowledge of rebuilding and repairing furniture is at your disposal.

Art Furniture Co.

47 Years' Experience

Upholstering—Special furniture made to order

Chair Recaning

338 Linden Ave. Phone Wil. 4453

Oh, Pump No
More, My Lady

—and another one of the advantages of living in Wilmette is that you can call on either of our two dependable drug stores for your entire drug needs. Our prices are so reasonable and our service so reliable that you'll be money ahead by calling us.



SPECIALS

Thursday Friday Saturday

Fren's Sanitary
Napkins, 2 doz. 25c

A.P.W. Snow Bird
Tissue, 15 rolls. \$1

Kleenex,
2 for 35c

Hill's Cascara
Quinine, 30c size 17c

Listerine, large
bottle, each.... 59c

Squibb's Tooth Paste
37c tube,
3 for \$1

25% Discount on All Houbigant Toilet Water and Perfume

WATCH FOR OUR WEEK-END SPECIALS EACH WEEK

TWO DEPENDABLE DRUG STORES

KODAKS E. C. Cazal
Pres.

SNIDER-CAZAL
DRUG CO.

Wilmette & Central Aves.

Tel. Wilmette

400-401

28 Years
of
Service

AUTO DELIVERY

Cazal & Saylor HYDROX ICE CREAM

RIDGE AVENUE
PHARMACY

Ridge Rd. & Lake Ave.

Tel. Wilmette

316-5316

First Church of Christ, Scientist

Tenth Street and Central Avenue

Wilmette, Ill.

SUNDAY SERVICES—11 A. M.

WEDNESDAY—TESTIMONIAL MEETING—8 P. M.

SUNDAY SCHOOL EXERCISES—9:45 A. M.

JANUARY 14, 1934

Subject: "SACRAMENT"

READING ROOM—1148 Central Avenue

Open Daily (excepting Wednesday) 9 A. M. to 6 P. M.

Wednesday 9 A. M. to 7:45 P. M.

Saturday 9 A. M. to 9 P. M.

The Bible and Works of Mary Baker Eddy and all other authorized Christian Science Literature may be read, borrowed or purchased at the Reading Room.

THE PUBLIC IS CORDIALLY INVITED TO ATTEND THE
CHURCH SERVICES AND VISIT THE READING ROOM