

# Merrily we go to School

—Wearing Things from the Second Floor of Field's Evanston Store . . .

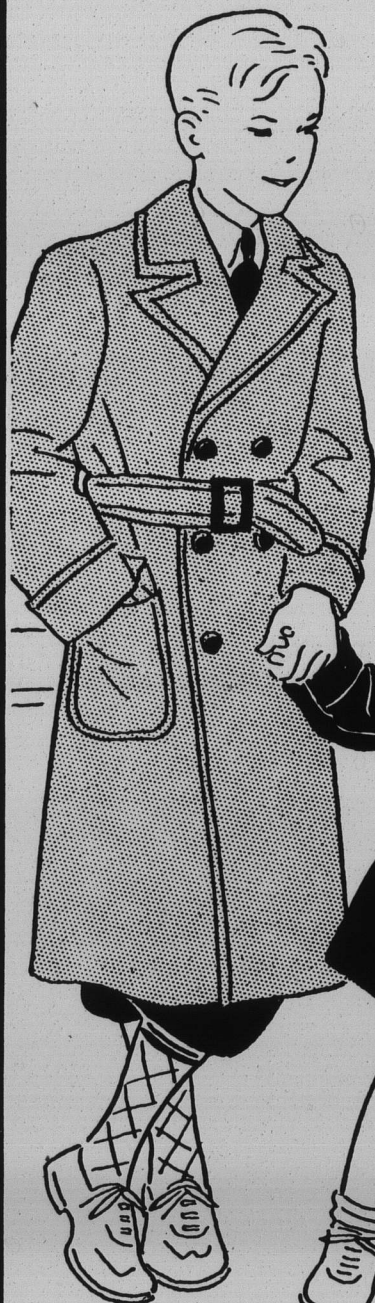
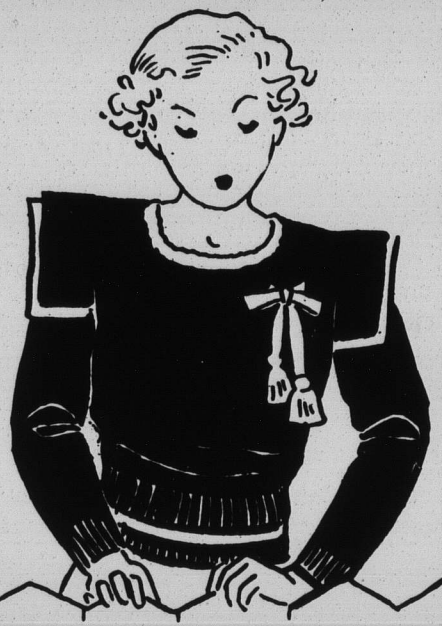


Taffeta blouse . . . will work wonders with any suit. It's red or brown in a really adorable design. Comes in sizes 12 to 16 . . . . . **\$3.75**

Cap and scarf sets . . . in bright, gay woolens. Sure warmth for young, cold weather enthusiasts. In tan and green, brown and orange, red and blue, **\$2.45**



Jersey sweater blouse . . . with wide, mannish shoulders—so decidedly in vogue. In wine, green or brown. Sizes 12 to 16 . . . . . **\$2.95**



Overcoats . . . 100% wool, with a wool lining and an all-around belt. Tailored as the young chaps would have them. In oxford gray, tan or brown. Sizes 11 to 18, **\$14.95**

(Not illustrated)

Overcoats . . . chinchilla, smartly tailored and wool lined for extra warmth. In double-breasted style with a half belt. Navy, tan or gray. Price . . . . . **\$10.95**

Boys' sweaters . . . in attractive plaids. Sizes 30 to 38 . . . **\$2.95**

Knickers . . . all-wool knickers in plus-4 style with slack and knit knee grips. In tans, browns, grays. Sizes 8-20. **\$2.95**

Coat set . . . all-wool chinchilla with a perky little cap to match. In belted, double-breasted style with a red flannel lining. Cadet or navy. sizes 2 to 6 . . **\$13.75**



Soon there'll be Witches everywhere . . . get your

## HALLOWEEN COSTUMES

Minnie or Mickey Mouse costume . . . gloves, blouse, pants or skirt, a long rubber tail and a mouse face. Outfit . . . . . **\$1.25**

Red Riding Hood . . . complete outfit . . . . . **\$1.10**

Little Bo-Peep . . . complete outfit. Price . . . . . **\$1.35**

Russian costumes . . . boy or girl outfits of bright, elaborately trimmed sateen . . . . . **\$3**

Second Floor

• • •

## The Finale of the Footwear Picture

### BOYS' WOOL SOCKS

There is nothing to equal wool socks for fellows who get about in all kinds of weather. These are in  $\frac{3}{4}$  and  $\frac{1}{8}$  lengths in plain styles or plain bodies with fancy cuffs. Prices range from . . . . . 65c to **\$1.50**

First Floor

Every Boy Loves High-Tops . . . and they are so very practical!

### HIGH-TOP SHOES

Rain, snow, slush—it's all the same to the lad snugly dry in high-tops. The uppers and soles are sturdily made to wear like iron under the toughest kind of duty. Sizes 11 $\frac{1}{2}$  to 2, **\$4.50**; 2 $\frac{1}{2}$  to 6, **\$5**; 6 $\frac{1}{2}$  to 8, **\$6**

First Floor

THE EVANSTON STORE • CHURCH AND SHERMAN  
MARSHALL FIELD & COMPANY

