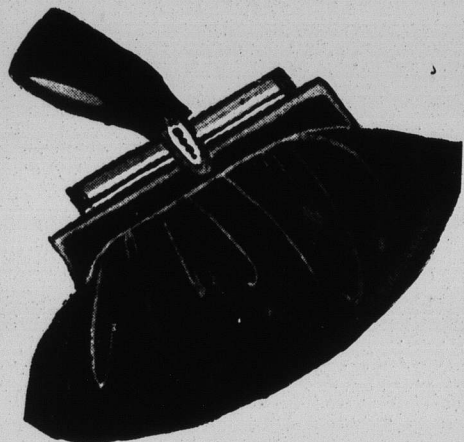
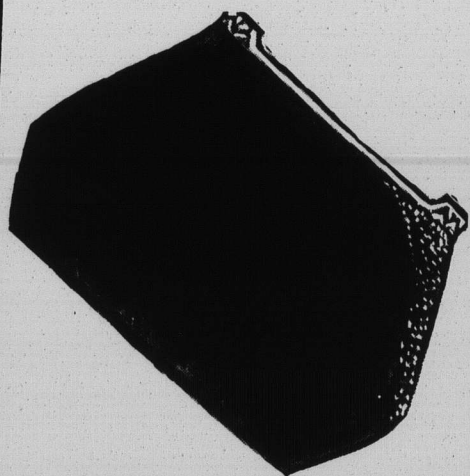


Take your pick of Fall Bags

(We've a wide choice)



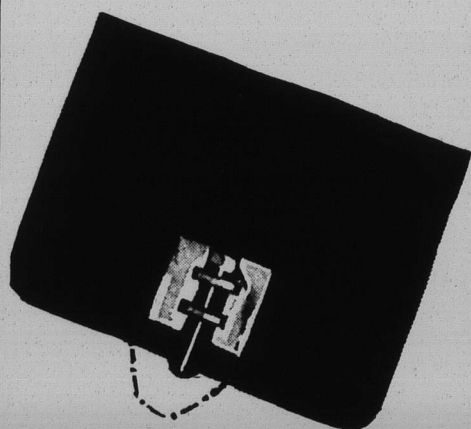
Velvet with crystal and
gold trim2.95



Black leather with smart
metal trim2.95



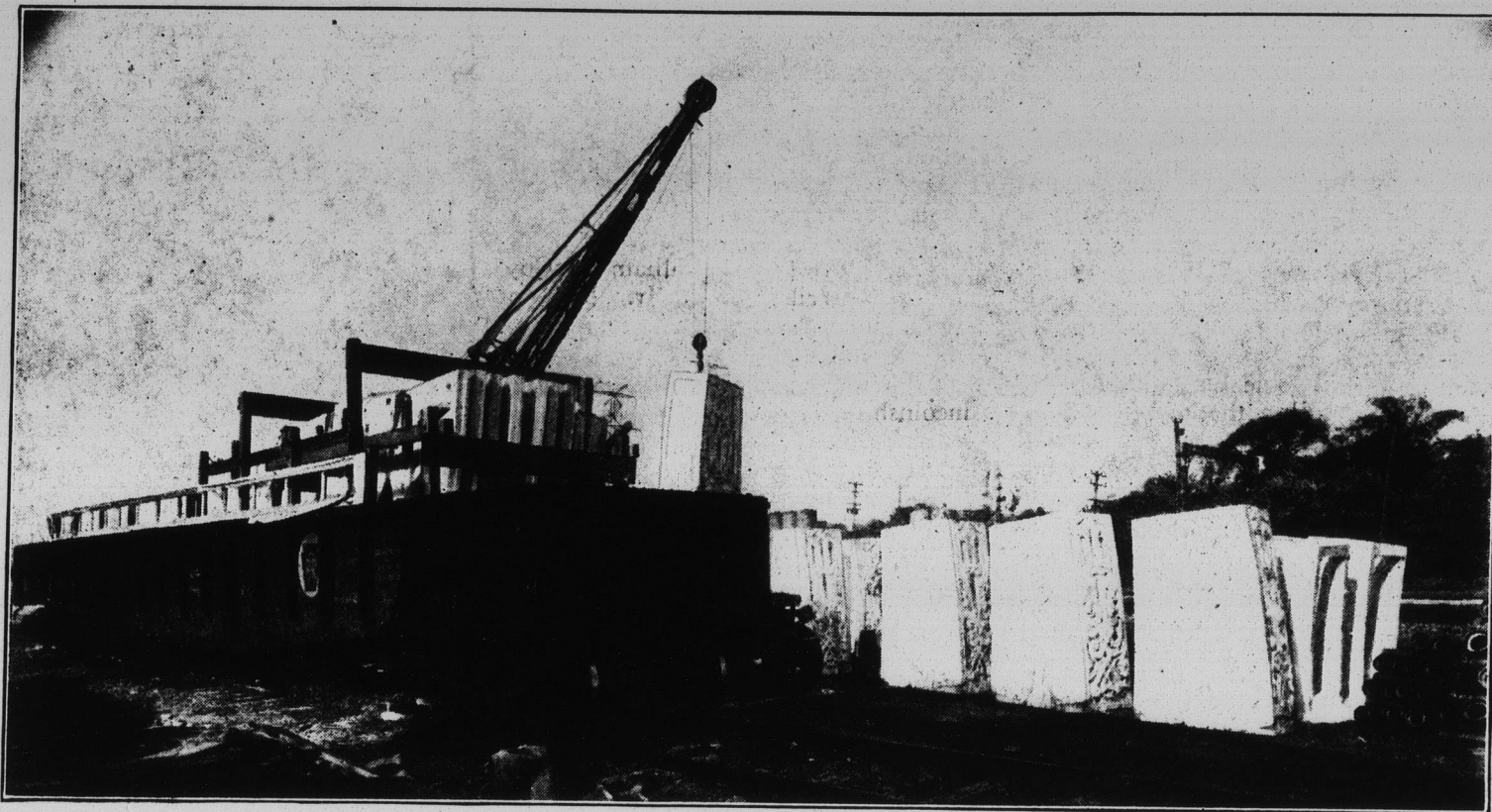
Bengaline with the new
mirror clasp2.95



Fine black suede with
metal trim5.00

Edgar A. Stevens, Inc.
1024 ORRINGTON AVENUE
EVANSTON

Receive First Giant Carload of Stone for Baha'i Temple



Mathew Francis Photo

Last week there was placed on a siding of the Chicago & North Western railway in the western part of Wilmette one of the largest unenclosed freight cars built. It measures 65 feet 6 inches inside, and was loaded with 36 pieces of artificial stone weighing 139,700 pounds, consigned to the Baha'i temple, and intended for use in covering the massive dome of that interesting structure. The Skokie Valley Coal & Material company was commissioned to unload and transport the stone to the temple site, where the work of putting it into place was begun on Tuesday of last week.

Those who have noted the gleaming whiteness and scintillating brilliance of this manufactured stone as it is being placed in position on the temple dome will be interested in the details of its composition and manufacture as related by B. G. Taylor, associated with J. J. Earley, architectural sculptors, of Washington, D. C., which firm developed its use for both exterior and interior finish. Mr. Taylor is spending some time in Wilmette supervising the work. In describing the material and its application he said:

Complicated Design

"To get an idea of the magnitude and difficulties of the undertaking, one must know that the Baha'i temple is the most elaborate steel and concrete building in the world, and that the design itself, providing for nine sides, offers construction problems not easily solved. These nine

sides are carried in effect to the apex of the dome, further complicating the difficulties, as the stone must be molded to fit the steel fabric which rises from the base of the dome to its top. The nine major girders form the division lines between the nine different sides.

"Also, it must be recognized that the Baha'i temple dome is among the five largest in the world, and compares favorably in size with any of the others. The dome on the capitol at Washington, D. C., is also among the five. The temple dome is the only one wherein concrete covered steel is employed.

Utilize Quartz

"The material being used is known as Earley process concrete, though often referred to as artificial stone. To cover the dome will require 387 sections, each section weighing from 1½ to 2½ tons. As the individual sections are placed in position they are firmly bolted to the steel girders, no cement being used. The glass beneath the steel fabric takes care of the water, carrying it into the draining system. It may be of interest to know that the hoisting crane being used in this work is welded together and not bolted, as is the ordinary crane. This crane, was built especially for the present job because no chances could be taken on weak or insecure bolts.

How Mixture is Made

"The materials from which Earley process concrete is made are worthy of note also. In its composition two

kinds of quartz are used, one clear and the other opalescent. One is found in Georgia, the other in North Carolina. It is the strongest and at the same time lightest stone known. This quartz is crushed into pieces about the size of a pea or bean, and mixed in the proportion of 75 per cent clear to 25 per cent opalescent. Still other quantities are ground to the fineness of sand and this, mixed with a clear white cement, forms the concrete.

"All of the manufacturing is done in our studios at Washington, D. C. The mixture is made and poured into plaster molds, which permits of the designs as shown in that being placed on the temple. It will always retain that brilliant, scintillating whiteness because of its extreme hardness, which renders it impervious to moisture, which is the cause of discoloration in concrete.

Provided in Colors

"It might be interesting to add that this material can be provided in any desired color. We are now employing seven different colors in the new Department of Justice building in Washington."

Owing to the policy of the Baha'i association of not awarding contracts for work until the money is in hand to pay for it, only the dome is being covered at this time. It is said to be the intention, however, to face the entire building with this unusual and extremely beautiful material.

New Trier Chess Club to Meet World's Fair Team

Representatives of the New Trier Chess club will compete against A Century of Progress Chess club next Sunday afternoon in four-handed chess, Angel chess and regular chess. Camelot will also be demonstrated by Miss Bird Batz and Teddy Greig. C. A. McCann, 1529 Washington avenue, Wilmette, telephone Wilmette 2914, represents the New Trier Chess team, and further particulars can be secured from him, it is announced.

HONORS BRIDE-TO-BE

Barbara Holden, 527 Warwick road, Kenilworth, entertained at a lingerie shower and tea Monday in honor of Jane Wilson of Winnetka whose marriage takes place Friday of this week.

**WILLIAMS
OIL-O-MATIC
HEATING**

The Lowest Cost Automatic Heat Is

OIL-O-MATIC

Phone for Free B. T. U. Survey

Williams Oil-O-Matic Heating Corporation

520 Davis St.

Evanston, Ill.

Phone Greenleaf 2300-2301
Wilmette 2300

185 No. Michigan Ave.

Chicago, Ill.

Phone State 8057