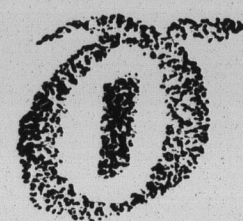


This is a BIG WEEK at Field's Evanston Store

AND HERE ARE THREE OF THE IMPORTANT FEATURES PLANNED FOR YOU



For College!

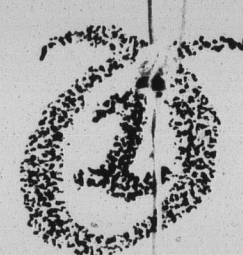
For an Autumn in Town!

BAGHEERA BERETS at \$5⁷⁵



Here are two of our new Fall collection of smart Bagheera Berets. You know how jaunty and wearable a beret can be—and these of Bagheera are particularly smart. Be sure to see them! \$5.75

On the Fourth Floor



Get Ready for College

... for here are just lots of things you will want to have when you leave for college next month. University girls helped our buyers select them in New York . . . and Miss Joan Cotter, of Northwestern, and Miss Betty Ann Luther, of Wellesley, will be in our dress sections from 10:30 to 5 daily, all this week to help you make your plans for the opening of school.



Right:

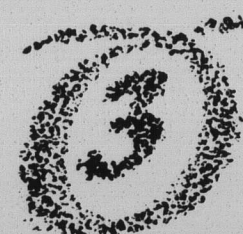
This very wearable 3-piece tweed suit for Miss University of Chicago . . . which comes in beetroot and brown; sizes 14 to 20 . \$22.75

This young woman (who's going to Northwestern) wears a natural camel's hair polo coat with leather buttons; sizes 12 to 20 . \$25

Get Ready for College Apparel . . . on the Fourth Floor

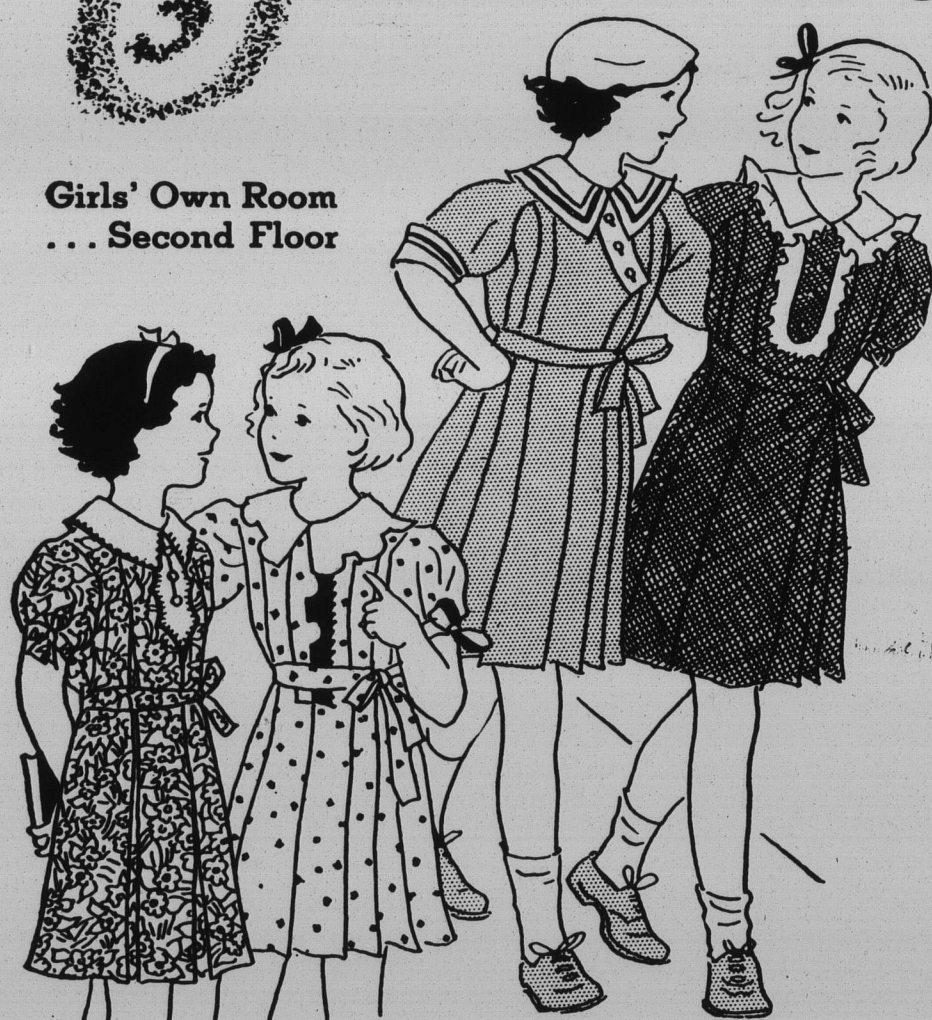


Come to Field's Evanston Store to Get Ready for College . . . Smart Hosiery, Lingerie and Accessories, Luggage, things for your Room at College, and new Fall Fashions in Footwear in the August Sale of Shoes.



DRESSES for GIRLS \$1⁹⁵

Girls' Own Room
... Second Floor



Left to Right:

A new challis print to wear when school starts; brown and navy with white poplin collar and vestee; 7 to 12 . \$1.95

This bloomer dress in brown, red and blue checked dotted has linen collar and front; sizes 7 to 12. Price . . . \$1.95

This broadcloth bloomer dress has raglan sleeves and white collar and cuffs; open, resido and peach; 7 to 12 . \$1.95

Checked print bloomer dress for the "chubbie" little girl; red, green and blue with fagoted trim collar and vestee; sizes 7 to 12 \$1.95

This 2-piece white satin evening dress is an important part in this young woman's college wardrobe for Wellesley; sizes 11 to 17 . \$22.75

Black crepe combined with white satin (sizes 11 to 17)—and it will be grand for tea time at Smith . . . \$12.75

On her way to the University of Illinois, with this 1-piece angora dress in new Fall shades; sizes 14 to 20. Price \$18.75

Ready for rush time at Vassar with this captivating faille crepe, in black or brown; sizes 14 to 20 . . . \$17.50

OPEN AT 9 A. M. AND NO CHANGE IN STORE HOURS . . . 9 TO 5:30 THROUGH THE WEEK, AND 9 TO 6 ON SATURDAYS DURING AUGUST

THE EVANSTON STORE • CHURCH AND SHERMAN
MARSHALL FIELD & COMPANY

