



Prepare yourself for the Dollar Day Special. Unusual offer. Come in and let us show you.

MATHEW FRANCIS STUDIO

2ND FLOOR WILMETTE THEATRE BLDG.
1122 CENTRAL AVENUE
PHONE WILMETTE 2526

Junior C. D. A. Hold Initiation

The Junior Catholic Daughters of America, Wilmette Court 848, held initiation Sunday, January 22, at St. Joseph's school for nine new members. Dinner and an entertainment followed the ceremonies.

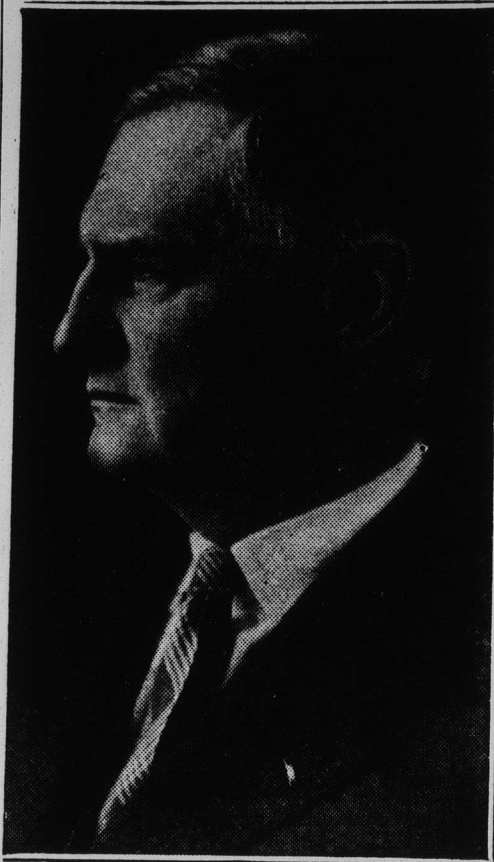
The program was given by the following members: Miss Marcella Schneider, piano; Miss Marie Meyer, violin, accompanied at the piano by Miss Mildred Bone; Miss Genevieve Birlauf, dancer, Miss Gertrude Goetz, piano accompanist; Miss Marcella Bruckhauser and Miss Frances Schmidt gave several short dramas, and a future member of the Junior Daughters of America spoke several pieces. A number of the seniors were guests of the juniors.

On February 25, the next meeting, the juniors will have a Valentine party.

BLUE PENCIL MEETING

There will be a meeting of the Blue Pencil club at the residence of Mrs. Vibe K. Spicer, 312 Essex road, Kenilworth, on Friday, February 10. The subject for study will be "Sonnets." Eight members out of fourteen have sent in original sonnets.

Launches Campaign



Gen. Robert E. Wood, honorary president of the North Shore Area, Boy Scouts of America, fired the opening gun in the area's annual fund campaign to meet the budget requirements of the ensuing year. General Wood addressed a meeting of area leaders last Friday at headquarters in Highland Park. The drive is now in progress.

Mrs. W. B. McConnell, 245 Sheridan road, Kenilworth, is visiting Mrs. E. G. Cowdery in Altadena, Cal.

BEEBE LECTURE HERE FEB. 20

Famous Explorer to Appear Under Auspices of New Trier High School Boys' Club

Dr. William Beebe, who is often referred to as the most popular scientist in the world today, comes to the north shore on Monday, February 20, when he will give his latest lecture, "Two Miles Down"—the story of his sensational explorations of the ocean depths off Bermuda—at New Trier High school.

The Tri-Ship Boys' club of the high school is the sponsor of Dr. Beebe's appearance here. From the proceeds of this lecture the club hopes to swell its relief fund, according to F. D. Frisbie, the New Trier faculty member who assists and advises the high school boys in their club activities.

Fascinating Portrayal

Dr. Beebe has an enormous following as a result of his lecture appearances, his books and the numerous articles he has written for magazines and newspapers. He is, according to those who have heard him, a man of science who can talk of his studies in glowing and picturesque words.

As a director of the tropical research of the New York Zoological society, Dr. Beebe has traveled to the remote corners of the earth, studying the habits of birds, animals, insects and fish. Borneo, Malay, Mongolia, Tibet, the Galapagos Islands, British Guiana, the Sargasso sea, the Pacific, the waters off Haiti and the deep Atlantic off Bermuda all have yielded their treasures for Dr. Beebe's research.

Submarine Study

"Two Miles Down," the lecture which Dr. Beebe is giving this season, deals particularly with his submarine explorations at Bermuda. It is illustrated by animated cartoons and colored slides showing the marvels of what Dr. Beebe himself calls "the fairyland under the sea."

Dr. Beebe's deep sea explorations are conducted in a huge steel ball, or bathysphere, six feet in diameter, with windows of fused quartz and a 400-pound steel, bolted door. The bathysphere, invented by Otis Barton, is attached by the finest non-twisting cable and electric wire to a barge, and is equipped with oxygen tanks, telephone, electric lights, fans and thermometers. Telephone communication between Dr. Beebe in the bathysphere and his assistants on the barge is constantly maintained.

Gives Two Lectures

Dr. Beebe will give two lectures at New Trier High school, one in the afternoon at 3:30 o'clock for high school and grammar school students and another in the evening at 8 o'clock for adults. Tickets are available now at the high school, it was announced this week.

NEW CANARY BODY BUILDER

AMERICAN CANARY
BIRD FOOD With
COD LIVER OIL



Nutrition—for all birds—all the time. Relieves shedding out of season. Real body-building qualities prevent colds and other ailments. Rich in vitamins A, B and D.

FREE!
Your local dealer will give you a free copy of our valuable book "How To Care For And Feed Birds," or send us his name and we will mail a copy to you.

American Bird Products, Inc.
Station "C," Chicago, Ill.

QUALITY BEEF SALE

THURSDAY, FRIDAY and SATURDAY

At National The cost of quality beef is down and National brings you prime cuts at money-saving prices. Buy the meats for an appetizing dinner at National's big Quality Beef Sale!

At these National Tea Co. Food Stores

350 Linden, WILMETTE	408 Green Bay Rd. KENILWORTH
1107 Central, WILMETTE	547 Lincoln, WINNETKA
1189 Wilmette, WILMETTE	932 Linden, HUBBARD WOODS
619 Main, WILMETTE	349 Park, GLENCOE

Pot Roast	Economical and savory — cook with vegetables	12 ^c lb.
Rib Roast	first 4 ribs	18 ^c lb.
	last 3 ribs	15 ^c lb.
Short Ribs	Roast or braise — for an inexpensive dinner	7 ^c lb.

Round Steak	Full of Flavor	15 ^c lb.
Sirloin Steak	Prime Cut	19 ^c lb.
Porterhouse	Thick, Juicy Steak	25 ^c lb.
Club Steak	The best you can buy	25 ^c lb.

Other Quality Meats

Pork Loins	Rib or Loin End 3 lb. average	6 ^c lb.
Hamburger	Fresh Ground—a favorite for hot sandwiches	7 ^c lb.
Pork Liver	Fresh—a nourishing and economical dish	3 ^c lb.
Bacon Squares	Sugar Cured Finest Quality	6 ^c lb.

Feb. 2, 3, 4

MONEY SAVING FOOD DISTRIBUTION
NATIONAL
TEA CO.
FOOD STORES

LIGHTING FIXTURES

at

Less Than 1/2

We are offering our complete stock of fixtures at this real money-saving price preparatory to moving to our new quarters at 1165 Wilmette Avenue on or about March 15th. Now is the time to purchase that odd fixture, that you have wanted, at 1/2 the normal value.

Less Than 1/2

Everything Electrical

RANDLEV'S

Formerly Dannemark Electric Co.

1151 Wilmette Ave.
Phone Wilmette 214