

Cradle Tea Room Locale for Art Show in December

Mrs. Robert S. Larimer of 2019 Sherman avenue, Evanston, is to have an exhibit at the Cradle Tea room at the Cradle on Ridge avenue in Evanston on two successive Thursdays, December 8 and 15, from 12 until 4.

For the past six years Mrs. Larimer has had an Art Sales studio in her apartment. She is a niece of Karl Buehr, one of Chicago's well known artists and is now in partnership with her uncle, George Tracey of Glencoe, who for fifty years has made a collection of antique jewelry and prints, some Early American glass, and old Sheffield plate.

Her exhibit at the Cradle tea room will include miniatures by Emma Hess Ingersoll, whose miniature of Miss Ferguson hangs in the Evanston Art center. An artist of high standing, she has won a medal for her miniature work at the St. Louis exposition this year. She is on the jury at the current Philadelphia exhibit and will be here directly after Christmas.

Mrs. Larimer's exhibit also is to include pastel portraits by Helen Beatrice Slutz, whose water color portraits in profile done under auspices of the Evanston Parent-Teacher association of Evanston will keep her booked until after Christmas. Inquiries for her work already have come in from Kenilworth and Winnetka, it is announced.

Some Sheffield plate, old prints, and pieces of old glass from Mrs. Larimer's studio also will be on display at the Cradle during these two days.

Emile Zoir, Artist, Starts N. S. Classes

Prof. Emile Zoir, Swedish artist and modernist, whose Wilmette School of Modern Art is now located in the Fine Arts building in Chicago, has started a North Shore branch of the school in the Art League studio in Winnetka Community House. The class meets on Wednesday afternoons at 1 o'clock for life study from the model.

Professor Zoir's school in Chicago, has met with fine response, it is said, and he is opening his Winnetka class for the accommodation of north shore residents interested in the study of the modern art of Europe. He is reviving Suprematism. Suprematism is, in brief, according to the artist, the manifestation and interpretation of all that one sees in color, particularly sound.

Emile Zoir, to whom have been awarded many European medals, is at work on an epic canvas, his latest mammoth depiction, a huge painting of the "Day of Judgment," which will be hung in a Chicago church when completed. Great strength, vitality, and rhythm in line and design mark his paintings, as do, in many instances, haunting moods.

"Misery," a triptych, which won a gold medal, "ruthlessly depicts aged men and women bowed and bent with suffering," one of his critics writes, "and the theme of this new epic provides ample room to give expression to his talent for depicting elemental emotions".

His "Creation," and earlier epic, hangs in The Little Church-at-the-End of-the-road in Chicago.

AT RADIO SHOW

Mr. and Mrs. Lorenzo Dilks, 227 Sheridan road, entertained sixteen guests at the Chicago Athletic club dinner and show by radio artists last Saturday night.

USHERS AT WELLESLEY

Miss Elizabeth Balhatchet of Wilmette and Miss Margaret Gould of Winnetka have been chosen to be members of the Ushers corps for the concert series at Wellesley college. This is the first time that honor has been given to freshmen.

SOPHOMORES DANCE

The sophomores at North Shore Country Day school held a dance at the school Saturday, November 19, following the vaudeville performance there.

COLLATERAL LOANS

If you have collateral loans that should be taken up, see us for prompt service.

Phone WILMETTE 1167

KNUDTSON MORTGAGE and LOAN Co.

1167 WILMETTE AVE., WILMETTE

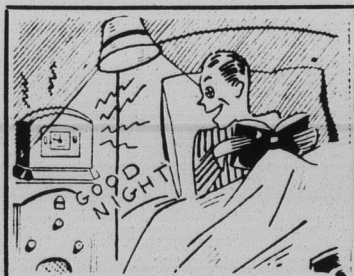
WIEBOLDT'S-EVANSTON

On Davis Street

Wilmette 1100

FREE With Every PHILCO CONSOLE PHILCO OFF-'N'-ON CLOCK

Turns It On! Turns It Off!



Listen in Bed

Doze off. Who's going to shut it off. Trust the clock.



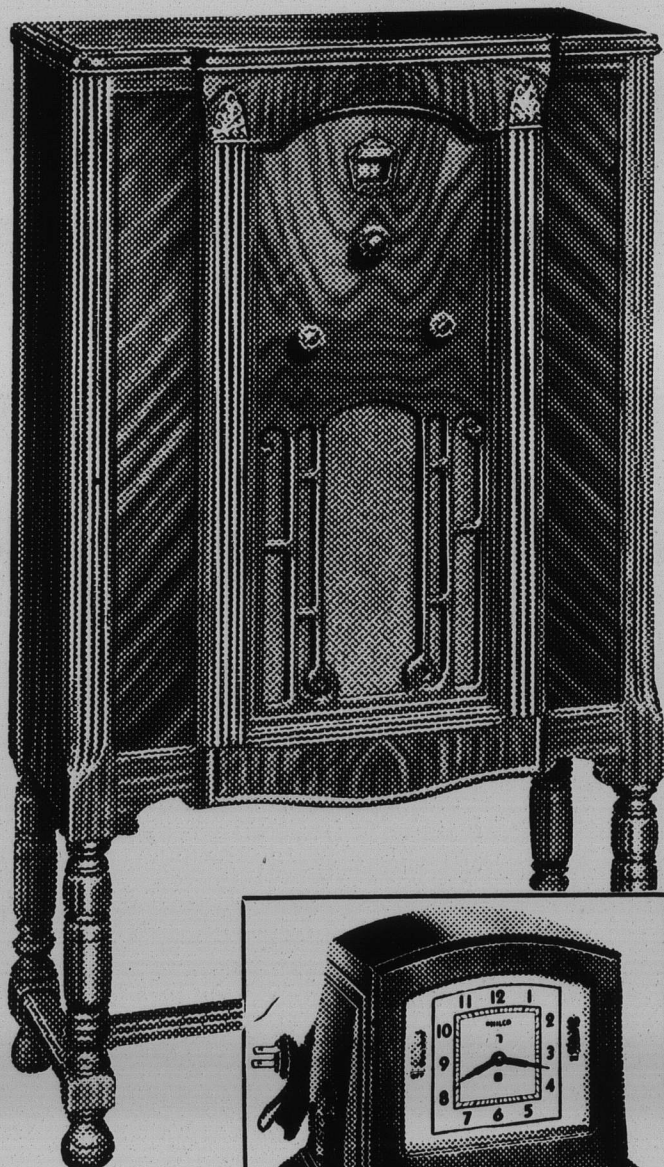
Wakes You Up

Arise to a cheering tune instead of the jangling alarm!



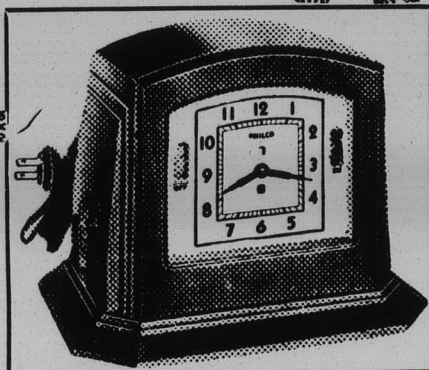
Like Magic!

Easy to forget "The Goldbergs" at 6:45, but the Clock won't let you miss.



\$5 Down

The Balance on Easy Terms



This Philco Radio Regulator Clock Is FREE with Philco's latest 1933 model superheterodyne.

Should you desire to exchange this radio for another model, you may do so within 30 days.

New Philco Superheterodyne

With this new Philco, at..... \$37.50

You get this clock. Regularly \$15

Regular price of combination ... \$52.50

Radio and the Clock, both for **\$37.50** Complete

Free Installation! Six Months Free Service!

A Clock that "remembers" for you the radio programs you forget to tune in! You simply set this new Philco for the wanted station, then set this clock for the time—you'll get your program on the dot, automatically, without having to lift a finger! Free only at Wieboldt's.

Mail This Coupon

I am interested in this Philco offer. Send complete details without obligation.

Name

Address

Phone