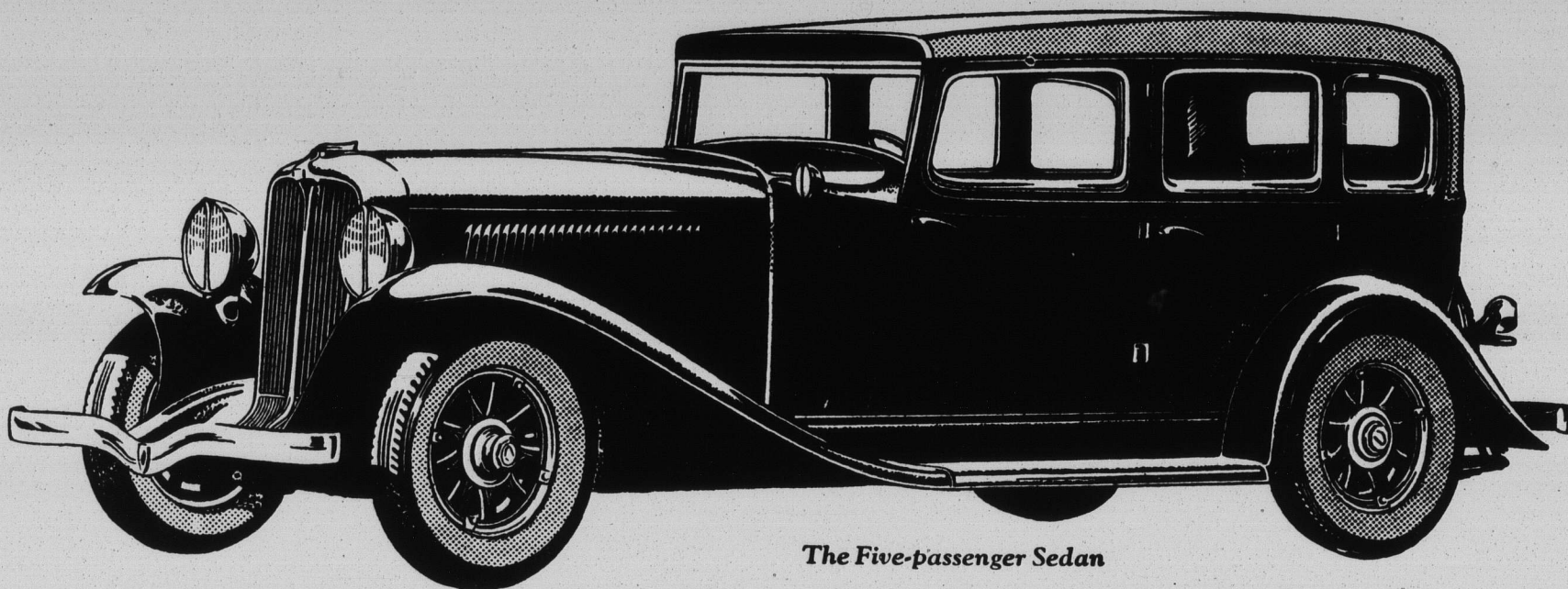


AUBURN

POWERED BY LYCOMING



The Five-passenger Sedan

\$995

f. o. b. factory

We submit five new models for the approval of the motor-educated public with the unqualified statement that Auburn has built better automobiles, of greater value, and for less commensurate cost to the consumer, than the world has ever known before. To you, who want to exercise the best dollar-and-sense judgment in your automobile investment, we extend an invitation to inspect and drive these new Auburn cars. Among the features we believe will appeal to you, are: 127" Wheelbase; 98 horsepower Lycoming Straight Eight; The only rear drive car with bridge construction, X-member, twist-proof frame, 8" in depth; Silent Mesh Transmission; Automatic chassis lubrication; The widest rear seat of any automobile; Heavily insulated bodies; Four 2-way hydraulic shock absorbers; Unusually wide steel doors and heavily reinforced and insulated bodies; Hair-trigger acceleration; Roller bearing steering; Short turning radius; Non-glare, slanting windshield; Hydrostatic oil gauge on instrument board; Adjustable front seats in all closed cars; and unusually roomy and low bodies and low center of gravity with ample head room.

Free Wheeling in all Custom models

Custom models 8-98A: 5-passenger, 2-door Brougham \$1145; Business Man's Coupe \$1195; Convertible Cabriolet \$1245; 4-door Full Sedan \$1195; Convertible Phaeton Sedan \$1345. All Custom Models include Free Wheeling. Standard models 8-98: 5-passenger, 2-door Brougham \$945; 4-door Full Sedan \$995; Convertible Cabriolet \$1045; Convertible Phaeton Sedan \$1145; Business Man's Coupe \$995; f. o. b. Connersville, Ind. Equipment other than standard, at extra cost.

AUBURN AUTOMOBILE COMPANY, AUBURN, INDIANA

BONDURANT MOTORS, Inc.

1909 RIDGE AVENUE, EVANSTON

GREENLEAF 1046