



"First in Wilmette"

#### THE ADVISORY COMMITTEE

**EUGENE V. R. THAYER**  
Chairman Executive Committee, Central Trust  
Company of Illinois  
Director, American Telephone & Telegraph  
Company, Otis Elevator Company, etc.

**DAVID E. SHANAHAN**  
Chairman of the Boards  
Central Mfg. Dist. Bank  
Terminal National Bank  
Midland National Bank

**E. L. ESSLEY**  
President and Treasurer  
E. L. Essley Machinery Co.

**WM. N. JARNAGIN**  
President  
Central Mfg. Dist. Bank  
Chairman  
Madison-Kedzie Tr. & Sav. Bk.

**H. E. PORONTO**  
Trustee  
Central Mfg. Dist.  
President  
U. S. Cold Storage Corp.

**ALAN C. DIXON**  
Capitalist

**ARTHUR MEEKER**  
Director  
Armour & Co.  
President  
Arcady Farms Milling Co.

**L. B. KUPPENHEIMER**  
Capitalist

**B. L. ROSSET**  
President  
B. L. Rosset & Co.

**FRANK L. WEBB**  
President  
Terminal National Bank

#### THE DIRECTORS OF THE BANK

**HARRY C. EDMONDS**  
Estate Managements

**RAYMOND G. KIMBELL**  
President  
Kimbell Trust and Savings Bank

**E. B. KNUDTSON**  
President of the Bank

**B. W. LYNCH**  
Vice-President  
H. M. Byllesby & Company

**THOMAS MOULDING**  
Moulding Brownell Company

**DAVID NELSON**  
President  
Nelson Brothers Laundry Company

**ALBERT N. PAGE**  
President  
Midwest Oil Burner Mfg. Co.

**GILBERT H. SCRIBNER**  
Winston & Company

**DAN G. STILES**  
Treasurer  
Railway Terminal & Warehouse Company

**ROBERT STODDARD**  
Vice-President and Treasurer  
Milk Bottle Crate Co.

**A. C. WOLFF**  
President  
Wolff-Griffis, Inc.

## Along Comes May

Bringing the opportunity again to save. The expenses of winter have been met and passed and those perennial tax demands of early spring likewise. Now it is possible again to lay by something in a savings account.

First National of Wilmette assists this purpose admirably. Right here at home it offers ultimate convenience of location and hours. Modern facilities make your transactions easy. Strength and competent management lend the assurance of perfect safety. And a spirit of friendly courtesy prevails.

This is a good day on which to start a Savings Account—Here.

## The FIRST NATIONAL BANK of WILMETTE

#### BANKING HOURS:

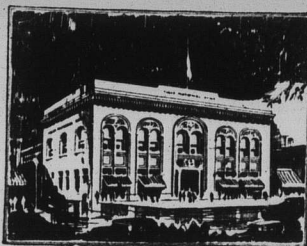
##### DAILY

8 a. m. until 3 p. m.

##### Saturday

8 a. m. until 12:30 p. m.

7 until 9 p. m.



#### DEPARTMENTS

COMMERCIAL

SAVINGS

SAFE DEPOSIT

TRUST

REAL ESTATE