

HOME AND



GARDEN

North Shore's Public Garden

By J. R. Foote

STUDY PLANT LIFE ON THE LAKE SHORE

Along the lake shore bluffs, stretched out so that they can be seen, are beautiful stretches of native plantings natural groupings and natural plant associations. Here one can see trees and bushes grow

as it is impossible to see them in the timber or in our wooded villages.

A natural stage has provided for us all a bird's eye view, a panorama which may be comfortably studied without any time limit. Here one may see the changes which the seasons parade before us.

Here we see colonies of trailing

junipers, native plantings of white barked trees and their effective contribution to any landscape. There is ample room to back off to the water's edge and study the verdure of the slopes from a distance.

Nowhere can one get a better and more conveniently sketched record of the habits, preferences and demands of a great variety of growing things. Here it is, a motion picture covering the entire run of the four seasons. It is enhanced by the colorings of sky, sun and waters, which only such a landscape can enjoy. The blue hazes as one looks far up and down shore, the music of the incoming swells, the bigness of it all seem to remove one for the time from the cares of home or office and to transport the willing mind to a new land.

Here and there private gardens and lawns flow down over the bluffs almost to the sand line, and they may be studied by anyone without even asking permission.

SEE THE NORTH SHORE FIRST

It is well worth while to study the gardens of the old world, the gardens of nobility, the gardens of the wealthy and the garden that do honor to our own country, but this superb run of beautiful plantings is so close at hand that it is quite generally overlooked. The water's edge is almost unexplored, is known possibly less by our own folks than by Sunday tourists coming from Chicago and more distant places. If a series of pictures of these bluffs, as taken from the water's edge or from the lake itself were to be thrown on the screen before our own people, very few would recognize them as being front yard pictures of our own villages. Rather we would guess them to be sea coast pictures from some foreign countries.

We need not go to Waukegan flats, the Indiana Dunes, the Fox lake country, we need not go camping in the north woods, much less to really foreign parts, until we have really seen our own shore line. When tired minds and tired bodies crave "relax" and rest, the sandy beach with the lake waters licking on the one side and the soothing colorings so deftly spread along the

banks on the other hand, do contrive to be mighty restful.

PUBLIC WALKS LEAD TO WATER'S EDGE

The beach is really accessible, although many folks must think otherwise. There are public walks and stairs which lead right down to the sandy beaches and these beaches are rather good promenades if you pick the stretches which are packed sufficiently solid.

Here the children may roll in the sand, play in the sand, dig in the clean washed sandy stretches, hunt for hidden treasures, and get home for all meals, though some prefer to take lunches along.

Right down against the breakwater, at the foot of Tower road, the Village of Winnetka is making garden this week. Bright barked shrubs and evergreen perennials will brighten up the view from the nearby municipal plant, even in the dull months of winter. If you wish to really share these landscapes you cannot do so by standing at the top of the hill and guessing what is at the bottom. In fact, the bigness and beauty of the thing can only be felt as you stand right at the water line and look up to see where you came from.

No garden is so fully different at the various hours of the day as is such a stretch of landscape. We study the landscape principles, we get the spirit of the designers, the motifs in the noted gardens of the ages. In no sweep of plantings can we more abundantly revel than right here in the north shore's own front yard, without cost and at our own discretion.

PLANTING THE ROCK WALL

Growing things in the ordinary city stone wall is a problem for many, and generally speaking it is rather a failure. It is really difficult to have sufficient soil in the chinks and pockets to hold the needed moisture.

Small perennial plants and annuals are few in number that are really worth while unless the wall has a very decided slant and generous soil areas.

Two kinds of plants are quite usable, however, the finer hardy vines, planted at the base and climbing along, rooting here and there in the wall, and hardy shrubs which may be started in the crannies of the wall from seed or from very small plants.

Some of the ornamental grasses and the tougher viny sort of alpine plants may be worked in to supplement the hardy vines and shrubs.

An old rambling wall, well planted and tidied up a bit now and then,

*Artistic Awnings***SPECIAL**

Lawn umbrella, table and two steel chairs exactly as illustrated to the right, specially priced at

\$56.00

Beach Umbrellas
Lawn Furniture

Canopies
Curtains

IVAN LIND

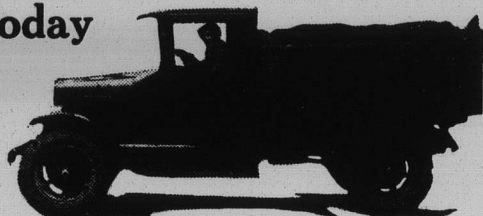
Awning Company
725 Main St., Wilmette
Phone Wil. 3376

**RICH BLACK SOIL***We have the Finest Soil available**Price is Right**Prompt Delivery Guaranteed**Phone Winnetka 375***FRANK L. SIMONS***Landscaping***Best Quality Black Dirt**

Delivered by Team or Truck

Phone Your Order Today

Rotted Manure
Lake Sand
Filling

**Wilmette Ice & Teaming Co.**

733 Main St.

F. Meier, Proprietor

Wilmette 53

EXPERT DECORATING

We pride ourselves on our ability to do expert work — decorating that stands the test of years and gives complete satisfaction.

M. Portenhauser

Painter and Decorator
1030 Greenleaf Phone 2764