

## RAVINIA OPERA OPENS JUNE 20

**Favorite Stars Return; "Peter Ibbetson," "William Tell," "La Basoche" on Opera List**

**By Rutheda L. Pretzel**

The twentieth season of Ravinia Grand Opera and concerts will open on Saturday night, June 20, and will continue through Monday night, August 31, according to an announcement from Louis C. Eckstein.

This season will bring a Chicago premiere, a revival of an opera not heard in this part of the country since the Chicago opera season of 1918-19, and an American premiere. These operatic novelties are, respectively, "Peter Ibbetson," which will be sung in English; "William Tell," and "La Basoche."

Ravinia will continue to march steadily forward in pursuit of that elusively lovely ideal, the perfect artistic achievement. In spite of financial matters, Ravinia will not rest on its laurels, but will seek new ones. The roster will again concentrate the great talent of the world for not only will all the favorites return, but a new tenor and a new baritone have been engaged.

### Bori Returns

Lucrezia Bori will again be heard in her popular roles of Manon, Mimi, Fiora, and in the Italian, French and Spanish operas to which she adds so much charm. She will be heard for the first time at Ravinia in English, when she sings the role of Mary, Duchess of Towers, a role which she created at the Metropolitan Opera house at the world premiere of "Peter Ibbetson."

Elisabeth Rethberg comes back to be heard in the dramatic and lyric roles, and she will be heard in a new role, that of Matilde in "William Tell." She will also have an opportunity to display a more complete portrayal of Elsa because of the inclusion this year of the second act of "Lohengrin."

### Await Yvonne Gall

Yvonne Gall will revive happy memories of past successes in such operas as "Marouf," "Louise," and "Faust," and will be heard in the modern French comic opera, "La Basoche."

In the tenor section, Giovanni Martinelli will be heard in the great tenor rolls of operatic history and will also sing the role of Arnaldo in "William Tell," a part he has never sung for Chicagoans.

Edward Johnson is another distinguished artist who makes Ravinia attractive. He will sing the roles which he has already made famous, and will also be heard in the name part of "Peter Ibbetson."

Mario Chamlee returns for the stellar lyric tenor roles. He has endeared himself to Ravinia patrons more each year.

### To Greet New Tenor

The new tenor is Frederick Jagel, who comes from the Metropolitan Opera company. He is said to have a brilliant dramatic voice.

Florence Macbeth returns to sing the coloratura roles; Inva Bourskaya, mezzo-soprano, will be heard again; Julia Claussen, Margery Maxwell, Philine Falco and Ada Paggi will return.

Guiseppe Danise, famous lyric baritone, will sing the title role of "William Tell," which has won him much praise elsewhere. Mario Basiola comes back in baritone roles, and other baritones are Desire Defrere, Louis D'Angelo and George Cehanovsky, while Alfredo Gandolfi is a promising newcomer.

Leon Rothier, great French basso,

will return, as will Virgilio Lazzari and Vittorio Trevisan.

### Same Conductors

The Chicago Symphony orchestra will again furnish operatic accompaniment and orchestral splendor, with Gennaro Papi and Louis Hasselmann as conductors, and Wilfred Pelletier will assist. Eric DeLamarter will conduct the Sunday afternoon concerts and Thursday afternoon children's concerts. The series of National concerts will be a feature on certain Sunday afternoons as usual.

Ruth Page and Blake Scott will head the ballet, while Franco Autori will be assistant conductor, Giacomo Spadoni chorus master and Desire Defrere stage director.

The standard repertoire will be expanded, as stated above, by three novelties.

Mrs. Albert G. Jefferson, 2901 Lake avenue, Wilmette, spent last week with her aunt, Mrs. John Hall, of Sandwich, Ill.

**THIS  
WEEK'S  
SPECIAL  
BRICK**

**HYDROX**

**FRESH STRAWBERRY  
BETWEEN TWO LAYERS  
OF TOASTED ALMOND  
ICE CREAM**

Full Quart Brick

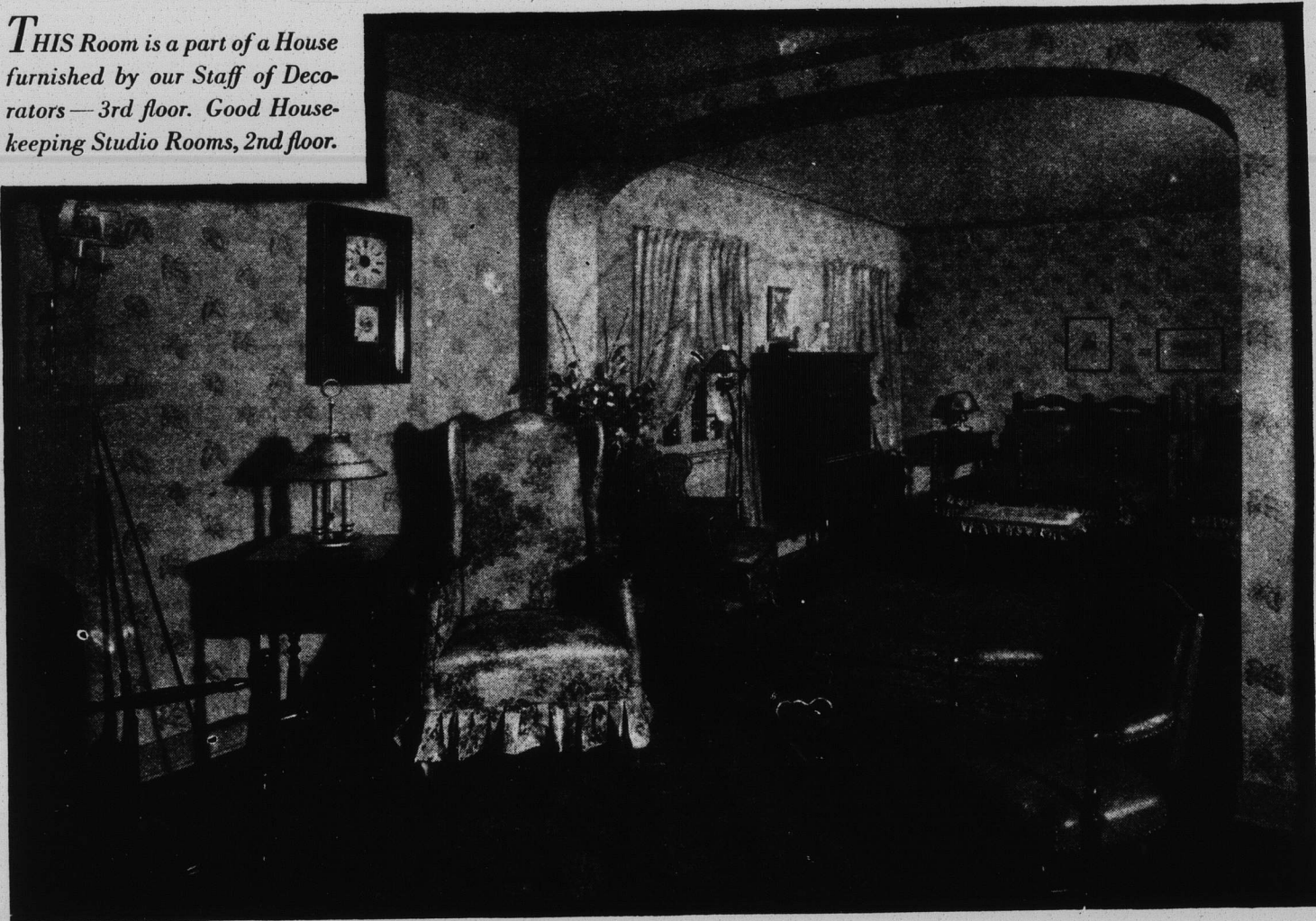
There is a  
Hydrox  
Agency  
Near Your  
Home

**PATRONIZE OUR ADVERTISERS**

**John M. Smyth Company**  
*Madison East of Halsted*  
Established 1867  
MANUFACTURERS - RETAILERS - IMPORTERS

**FREE PARKING**  
Drive up to our doors

*THIS Room is a part of a House  
furnished by our Staff of Deco-  
rators—3rd floor. Good House-  
keeping Studio Rooms, 2nd floor.*



## FOR YOUR WAKING AS WELL AS SLEEPING HOURS

THE treatment of this charming L-shaped room provides for all the milder necessities of one's daily life. A "Master Bed Room" that boasts a Secretary Desk and Day Bed (not shown), a chimney corner, and an easy chair beside the window! Each wing is complete in itself and at the same time is a part of a harmonious whole. The furnishings are colorful and informal and adaptable to other rooms of different architectural requirements. The pieces in order of their prominence are priced as follows: Smyth-made Cape Cod Chair, \$16.75; Drop Leaf Table, \$39; Chest, \$89; Twin Beds of Tupelo and Maple, each, \$29; Bench, \$19.75.

### TAXI OVER FREE

to this Store from any point in the Loop, any Loop Elevated Station or North Western R. R. Station. We pay on arrival. No obligation to buy.

**OPEN EVERY MONDAY AND SATURDAY EVENING UNTIL 10 P. M.**