

THE EVANSTON STORE • CHURCH AND SHERMAN MARSHALL FIELD & COMPANY

"Spring Opening . . . Shop Now in Evanston"

As practical as fashionable . . .

"1931 BUDGET ENSEMBLES"

Special selling . . . dresses . . . \$29.50 and \$39.50



\$5

CORN YELLOW

hat . . . transparent hair, floppy brim. A charming fashion.

FOURTH FLOOR

PEARL BEAD

bag . . . small and dainty. Suits the evening gown. One-of-a-kind bags.



\$8.50

YELLOW MOIRE

pump matches hat. Buy it in white, have it tinted. Tinting, \$1

FIRST FLOOR



\$29.50

APPLE GREEN

. . . a Spring-inspired shade for this evening dress. Youthful style. Other shades, too. Sizes 11, 13, 15 and 17.

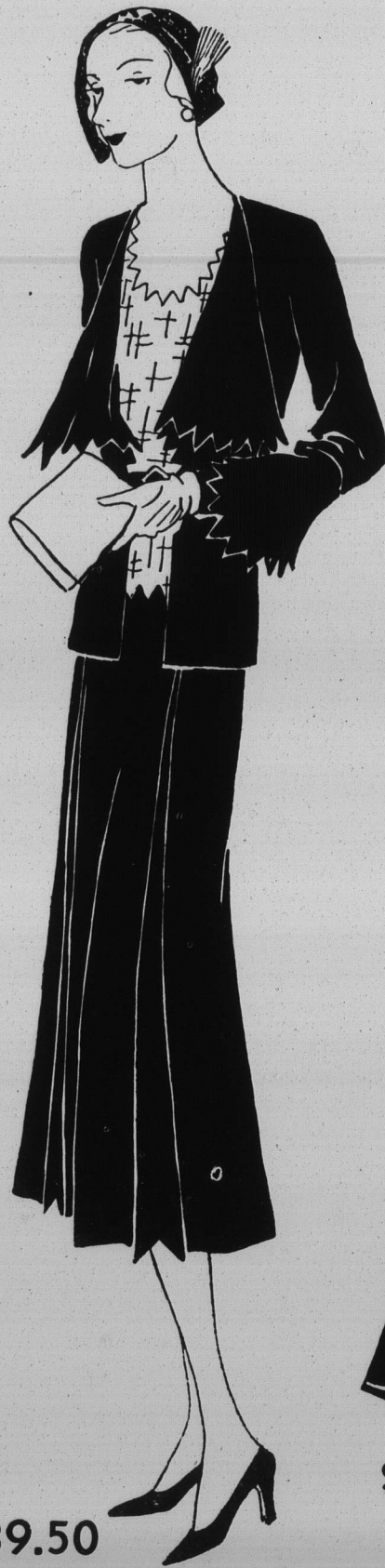
SPECIAL SELLING, 4TH FLOOR

This "1931 BUDGET ENSEMBLE" is \$48

Be thrifty-minded . . . see the

"1931 BUDGET ENSEMBLES"

Special selling . . . dresses . . . \$29.50 and \$39.50



\$39.50

SHINY vs. DULL

in the indispensable black and white ensemble. Sizes 14 to 20. Note patent leather belt and accessories.

SPECIAL SELLING, 4TH FLOOR

This "1931 BUDGET ENSEMBLE" is \$68.75



\$10

SHINY STRAW

hat . . . rough weave. Contrasts to dull surface of dress.

FOURTH FLOOR

PATENT BAG

goes with shoe and hat. Typical of our patent bag collection.



\$7.50

\$11.75

PATENT PUMP

The plain pump, how fashionable it is! It's a Young Moderns.

FIRST FLOOR