

EVANSTON STORE • CHURCH AND SHERMAN MARSHALL FIELD & COMPANY

Outfit the children at a saving...for all month long there are amazing values in the January
SALE OF CHILDREN'S WEAR



Children's Wash Dresses

\$1.55 \$1.95

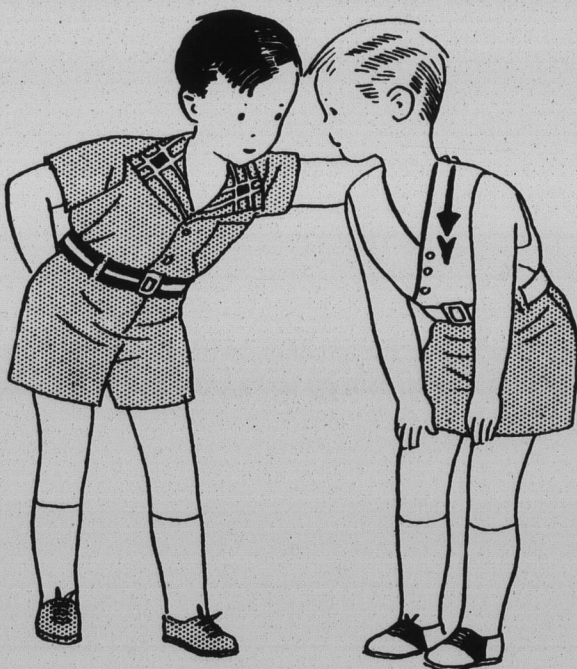
Sizes 2 to 6

Prints, plain colors, with matching bloomers. Tailoring details make these outstanding.

Boys' Wash Suits . . . Typical Values . . . Unusual at . . . \$1.95

Combination two-pant sailor suit in linen or broadcloth. Priced at \$1.95

Sleeveless linen or broadcloth suits. Sizes 3 to 8. Priced at \$1.95



INFANTS' WASH
DRESSES, SIZES 2 TO 6

GIRLS' WASH FROCKS,
SIZES 6 TO 16

BOYS' WASH SUITS,
SIZES 3 TO 8

CHILDREN'S COTTON
UNDERGARMENTS,
SIZES 2 TO 12

ON THE SECOND FLOOR

January Selling of Corsettes . . . Girdles . . . Brassieres

To illustrate how unusual the values . . . an all-in-one foundation garment of pink silk broche fabric, with rose pattern lace, double net lined. Boned to give firm support. Very unusual, \$10.50

Misses' and Women's Lovely Lace-Trimmed Lingerie . . .

Featuring one-piece pajamas in blazer stripes for \$3.45 . . . gowns of French finish crepe, princess lines, lace tiers, \$5 . . . envelope chemise, Alencon patterned lace trimmed. Unusual at \$2.75

ON THE THIRD FLOOR