

# Savers Are More Apt To Be Successful

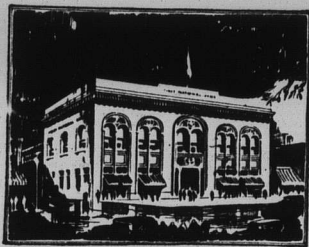
THE thrift discipline which is cultivated by regular saving is a factor which tells in the race for success. It builds character while it creates a competence which will guarantee a bright future.

Besides, a substantial savings account helps itself and the saver by earning interest steadily at assured rates. Just now is a good time to advance by this certified and safe method. And here are friendly service and complete facilities at your very doorstep.

## The FIRST NATIONAL BANK of WILMETTE

### DEPARTMENTS:

COMMERCIAL  
SAVINGS  
SAFE DEPOSIT  
TRUST  
REAL ESTATE



### BANKING HOURS:

DAILY  
8 a. m. until 3 p. m.  
SATURDAY  
8 a. m. until 12:30 p. m.  
7 until 9 p. m.



"First in Wilmette"

### THE ADVISORY COMMITTEE

ALBERT E. CROSS  
ALAN C. DIXON  
*Vice President, Terminal National Bank*  
E. L. ESSLEY  
*President & Treasurer  
E. L. Essley Machinery Co.*  
WM. N. JARNAGIN  
*President, Central Manufacturing District Bank*  
L. B. KUPPENHEIMER  
*Capitalist*  
ARTHUR MEEKER  
*President, Arcady Farms Milling Co.*  
H. E. PORONTO  
*Trustee, Central Manufacturing District*  
B. L. ROSSET  
*Chairman, Executive Committee,  
Phillip State Bank & Trust Co.*  
DAVID E. SHANAHAN  
*Chairman, Terminal National Bank*  
EUGENE V. R. THAYER  
*Chairman, Executive Committee,  
Central Trust Company of Illinois*  
FRANK L. WEBB  
*President, Terminal National Bank*

### THE DIRECTORS

HARRY C. EDMONDS  
*Estate Managements*  
C. H. FOX  
*Vice President, Chicago Trust Co.*  
RAYMOND G. KIMBELL  
*President, Kimbell Trust & Savings Bank*  
E. B. KNUDTSON  
*President of the Bank*  
B. W. LYNCH  
*Vice President, H. M. Byllesby & Co.*  
C. D. MASTERS  
*Vice President, Calumet National Bank*  
THOMAS MOULDING  
*President, Thomas Moulding Brick Co.*  
DAVID NELSON  
*President, Nelson Brothers Laundry Co.*  
ALBERT N. PAGE  
*Vice President & Treasurer  
Q. R. S.—De Vry Corp.*  
CHARLES F. REINBOTH  
*Vice President, Northern Bank Note Co.*  
GILBERT H. SCRIBNER  
*Winston & Company*  
DAN G. STILES  
*Treasurer, Railway Terminal & Warehouse Co.*  
ROBERT STODDARD  
*Vice President and Treasurer,  
Milk Bottle Crate Co.*  
A. C. WOLFF  
*President, Wolff-Griffs, Inc.*