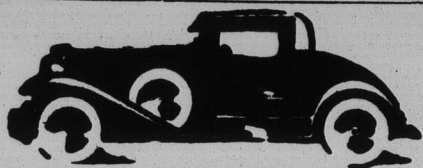


NORTH SHORE



MOTOR NEWS

New Ford Station Wagon Welcomed by Country Clubs

The new Ford Station Wagon, used either as a passenger car or a delivery unit, is proving popular among country clubs and country estates as a valuable addition to their motor equipment, according to the Skokie Motor company.

"As a passenger conveyance, the Station Wagon has comfortable seating accommodations for eight persons, with ample space for luggage on the lowered tail gates, should it be required," states a Ford official. "It is used for guests, for taking children to and from school and for servants.

"By removing the rear seats, the vehicle is converted into a hauling unit with a large loading space. It is particularly useful in marketing when large quantities of supplies are to be carried.

"The Station Wagon body is finished in natural wood, hard maple being used throughout. The wide seat in the driver's compartment accommodates three persons. In the rear compartment there are two single seats with a passage between to a full width seat, affording in all accommodations for five persons. The seats are deeply cushioned and upholstered in dark two-tone cross-cobra grain artificial leather.

"Side curtains are of rubber-interlined material, tan-gray in color to harmonize with the body finish, and have large window openings of heavy celluloid. When not in use they are carried in a steel compartment under the car floor at the rear."

Careful car owners place their tires in best condition on the front wheels, for the reason that a blow-out of a front tire is more likely to cause an accident than the blowing out of a rear tire, points out the Chicago Motor club.

Tar can be removed from the finish of automobiles by applying a solution comprising equal parts of turpentine and wood alcohol.

Governor Emmerson Tells Road Program

Springfield, Ill.—Governor Louis L. Emmerson, in an address before more than 100 highway engineers, representing many foreign countries, on an inspection tour of the Illinois road system, asserted that within a period of the years, Illinois has changed from one of the muddiest states in the Union to the leader of the nation in good roads construction. He added that "nearly 4,000 miles of main arteries remain to be paved within the next few years, and a great network of secondary roads must be surfaced before we have a system that is anywhere near complete." He pointed out that, for the completion of the task outlined—connecting every Illinois community with an improved highway—the required finances are in sight, due to the enactment of gasoline tax legislation.

Annual Dealer Meetings of Chevrolet Start Soon

A significant sign of the aggressive policies to be adopted by the automobile industry toward making 1931 rank with past years in volume is seen in the announcement that Chevrolet's annual dealer meetings are to get under way this week, two months in advance of the customary date. Four groups of sales officials from the home office, each group accompanied by a full carload of theatrical equipment, stage hands, electricians, etc., are scheduled to hold fifty meetings at as many central points during the next five weeks, which will be attended by upwards of 20,000 Chevrolet dealers and associated bankers located in every section of the country.

Two Trainloads of Nash Cars Reach Los Angeles

A stirring demonstration of renewed activity in the automobile industry was staged in southern California when two solid trainloads of new Nash cars rolled into Los Angeles bearing hundreds of glittering new models for the

great October Nash announcement and display and for later delivery to new Nash owners. The feature shipment, which was one of many big shipments dispatched from the Nash factories, for announcement day, went to the

Thompson-DeJarnette company, Nash distributor in Southern California, and carried new 1931 cars of the Twin-Ignition Eight-90, Twin-Ignition Eight-80, Eight-70 and Six-60 series valued at more than \$225,000.

These New Electric Parking Garages are a real delight for busy shoppers . . . say women everywhere

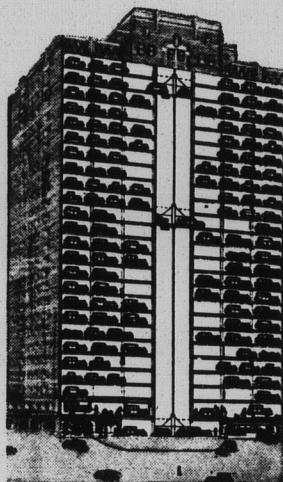
Located at 30 Quincy Street and at Harrison and Wabash, they end the parking problem for Loop and South of the Loop shoppers.

You merely drive in a wide entrance, lock your car and leave it. Electricity parks it for you, untouched by human hands. No greasy mechanic sits in the driver's seat.

The famous State Street stores and smart Boulevard shops are close at hand. You shop—and have your packages delivered to the garage, where an attendant signs for them and places them in your car when you are ready to leave.

Electricity returns your car quickly to you. You drive out a broad exit without confusion or delay.

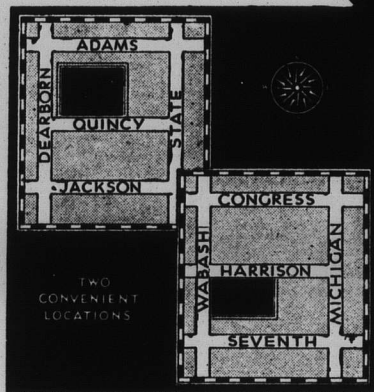
An atmosphere like that of a fine hotel, with rest rooms, writing rooms, telephones and check rooms, are additional features.



The Quincy Parking Garage. A new \$3,000,000 building, as spotless and attractive as a fine hotel.



At each garage a special parcel service receives your packages, signs for them, and places them in your car when you leave.



See how close these two unusual Garages are to the important stores and shops.

Quincy Parking Garage
30 Quincy Street
Webster 3600

Harrison Parking Garage
East Side of Wabash at Harrison
Harrison 4808

UNITS OF
NATIONAL PARKING GARAGES, INC.

MOTORS SERVICE

Incorporated

Phone
Wilmette
2600

HART OIL HEAT

Phone
Wilmette
2601

Sales—Service

HART OIL BURNERS

Largest Motor Repair
Shop in Wilmette
NEVER CLOSED

721 MAIN STREET
WILMETTE, ILL.

J. C. SLOWN

A. B. VAN DEUSEN