

TODAY

Stop taking chances. Two minutes—any two minutes—will put you on the safe side. For that's all the time it takes to drive onto our Jumbo Giant Brake Tester and find out exactly how your brakes are working—

BRAKE TEST FREE

ADJUSTING AND RELINING

BY FACTORY TRAINED EXPERTS

EXCLUSIVE OFFICIAL SERVICE

BENDIX
Mechanical Brakes

LOCKHEED
Hydraulic Brakes

The GENERAL TIRE

VULCANIZING

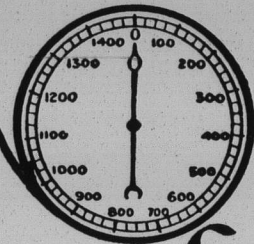
Expert Service All Sizes Including
Heavy Truck Tires

Vesta Batteries
Axle Straightening—Wheel Aligning
Faulty Steering Corrected

Plate & Starkel, Inc.

1854-60 Ridge Avenue
EVANSTON

GREENLEAF 7180 & 7181



See
FOR YOURSELF

Right before your eyes—on accurate hydraulic gauges—the JUMBO Brake Tester reveals the true condition of the brake on each wheel. Eliminates all chance for human error—no guesswork. Assures positive equalization and perfect balance of brakes—maximum braking efficiency—"guaranteed safety!"

Suggest Best Route to Derby

At this time of the year the interest of the entire nation is centered on an important national event, the Kentucky Derby, which will be held on Saturday, May 17, at the world-famed Churchill Downs in Louisville. It is here that thousands of enthusiastic sport fans are assembled each year to participate in one of the most popular sports, horse racing.

This is the first of a series of weekly tours to be given readers of this newspaper, in cooperation with the touring bureau of The Automobile club of Illinois.

There are several tours which may be taken to Louisville. The shortest and probably the most popular one of these is that which leads south on U. S. 41 through Hammond, Ind., to the junction with U. S. 52, nine miles south of Kentland. U. S. 52 is then followed to Indianapolis, a distance of 190 miles from Chicago.

For those who do not care to drive the trip in one day, this city with its excellent hotel accommodations is the logical stopover point. Leaving Indianapolis on Madison avenue, U. S. 31 is followed 126 miles south into Louisville, making a total of 327 miles, and paved throughout.

U. S. 31 divides just north of Jeffersonville and New Albany; U. S. 31E takes one through Jeffersonville and U. S. 31W through New Albany. Highway markers give those distinctions. The

route through Jeffersonville is the more popular and is the shorter. Crossing the municipal bridge the toll is 35 cents per car with all passengers.

Another popular route is that which passes through West Baden and French Lick, Ind. The route indicated by way of Watseka, Illinois, is about 330 miles, and the one through Plymouth and Peru, Ind., is 320 miles. They are both entirely paved. The mileage and log follow:

Chicago to Louisville, Ky.

At Michigan avenue and Jackson boulevard go south on U. S. No. 41:

TOWNS	MILES SOUTH
CHICAGO	0.0
South Chicago	14.3
Ill.-Ind. line	16.3
Hammond, Ind.	22.8
Munster	26.6
Maynard	27.6
Dyer	31.7
Schereville (Outskirts)	35.6
St. John	38.5
Hanover Center	43.5
Belshaw (Outskirts)	52.6
Schneider	57.6
Lake Village	61.1
Morocco	76.5
Ade	82.4
Kentland	89.7
Earl Park	96.4
Take U. S. No. 52	98.5
Junction U. S. 52	103.6
Fowler	115.5
Oxford	117.6
Templeton	125.4
Otterbein	129.5
Montmorenci	138.6
Lafayette	174.2
Lebanon	185.2
Royalton	188.6
Trader's Point	193.7
Flackville	201.1
Indianapolis	201.1
Take U. S. 31	208.5
Southport	212.3
Greenwood	216.8
Whiteland	222.0
Franklin	227.2
Amity	232.0
Edinburg	239.5
Taylorville	259.1
Columbus	265.6
Seymour	271.0
Chestnut Ridge	274.8
Uniontown	285.7
Crothersville	291.5
Scottsburg	296.8
Underwood	302.1
Henryville	306.6
Memphis	311.0
Speeds	312.0
Sellersburg	313.2
Hamburg	320.5
New Albany, Ind.	326.0
LOUISVILLE, Ky.	326.0

Report New Graham Wins Enthusiastic Approval

One clear-cut indication of the increasingly healthy state of the automobile market is seen in the enthusiastic reception which is being accorded the recently announced low-priced Graham six models throughout the country, says F. R. Valpey, Graham general sales manager. Telegrams from distributors and dealers who have the new models on display report a degree of public interest that has seldom been matched in their experience and sales in quantities which are sufficient to establish firmly the standing of the new Gramhams in the very forefront of their price class.

Watch next issue for trip to Decoration day races at Indianapolis.

DEMAND—

from your local dealer

The New WAXFREE HAVOLINE

for perfect lubrication

There is a grade of Waxfree Havoline for every car in every season

35c a quart—worth far more

BRAUN BROS. OIL Co.

Distributors

812 Oak Street

Phone Winnetka 3020