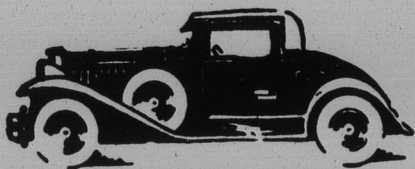


NORTH SHORE



MOTOR NEWS

Rush Preliminary Work on County's Road Paving Task

One hundred and eight paving projects, to be prepared and let at the rate of twenty miles every two weeks until the 1930 program is completed, was announced by President A. J. Cermak, of the Cook County board, this week as he ordered speed in the 1930 program due to the delay in getting started on this year's work.

The cause of the delay was explained by President Cermak as due to employment conditions, as well as the fact that the recommended 1930 program was not received from the Chicago Association of Commerce until March 1.

Major Quinlan, superintendent of the highway department, reported that twenty miles of the program is ready but is awaiting state approval, and there is a certain amount of red tape that must be followed before the letting of the contracts.

"We are planning to rush the 1930 program to the utmost," declared President Cermak, in commenting upon the paving plans for this year.

"We plan to build 108 projects, amounting to eighty-five miles of roads, eight bridges, and thirteen railroad grade separations. Forty-nine of these projects are in the city of Chicago and their estimated cost is \$3,214,000.

"The 1930 program will be built from the gasoline tax revenue, the Cook county highway tax, and the state refunds. The entire program for the year will entail an estimated expenditure of \$7,200,000.

"It has been our policy to build those roads first which will serve the largest number of persons, and we have left the designation of preference to an impartial citizens' committee which is composed of representatives of the Chicago Association of Commerce and the Chicago Regional Planning association."

Graham Sales Manager Finds Business Better

One clear-cut indication of the increasingly healthy state of the automobile market is seen in the enthusiastic reception which is being accorded the recently announced low-priced Graham six models throughout the country, says F. R. Valby, Graham general sales manager. Telegrams from distributors and dealers who have the new models on display report a degree of public interest that has seldom been matched in their experience and sales in quantities which are sufficient to establish firmly the standing of the new Grahams in the very forefront of their price class, he says.

Skokie Motor Delivers 72 Fords in One Month

Seventy-two Fords were sold and delivered by the Skokie Motor company, 435 Main street, Wilmette, during the month of April. D. W. Leonard, manager, reports that this was the biggest month's sale for the nine years that his company has been in business. In the space of ten days within the month, the Skokie Motor company delivered forty Fords, an average of four a day. Mr. Leonard attributed the unusually large sales to the increased service which the Skokie Motor company is offering its customers and to the beauty of line, stability, and economy of operation that the new Ford offers.

Efficiency Cuts Down Auto Plant Junk Heap

The size of the junk pile of an automobile plant a few years ago, to a considerable extent, was a measure of the quality of the car. The larger the junk pile, the better the automobile, used to be the rule. Now the size of the heap is a measure of the plant's efficiency and the rule has been reversed—the smaller the junk pile, the better the car.

Men who had contracts for clearing away waste materials from automobile plants in Detroit in years past grew rich. Now waste is cut to the minimum. The industry is more closely approaching the meat packing industry where "only the squeal of the pig is lost."

In the factories of the Packard Motor Car company, use of the finest possible tools together with highly developed manufacturing and inspection processes have practically eliminated the "scrap pile."

Even the metal shavings and metal "sawdust" now are recovered and used by Packard. They are gathered by mechanical equipment and pressed into solid bars in giant hydraulic rams. In this form they are used in the big melting furnaces of the foundries.

Shavings, sawdust and small waste pieces in the wood-working mills are carried by air pressure through great pipes to the power house where they are burned under special boilers. Even the wood from packing boxes received into the plant is chopped up into small bits and used to generate steam. A laundry in the plant makes spotless great quantities of cleaning cloths for use all through the factories.

Boston Puts 3,000 Cab Limit; Authorizes Stands

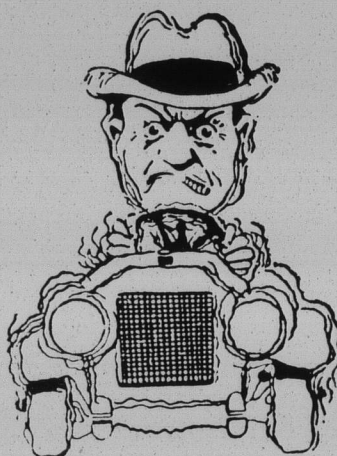
The Massachusetts state senate has passed to be engrossed the Boston taxicab bill, which limits the number of taxicabs in the city of Boston to 3,000, prohibits hotels and railroads from receiving money or rental for adjacent stands and permits the police commissioner to establish special stands without the consent of an abuttor.

TRAILERS POPULAR

A marked increase in the use of light trucks in combination with trailers and semi-trailers is being reflected in the sales of Model AA truck chassis, according to officials of the Ford Motor company.

WORTH REMEMBERING

Because engines are higher speed than they were once they are traveling faster at all road speeds. This means higher oil consumption, and the owner who forgets it may be courting considerable trouble.



STOP!

—fighting your steering wheel
—scuffing away your tire tread

Put an end to that wandering, weaving, hard steering and SHIMMY. Stop cupping, pitting, gouging, and grinding away the life of your tires.

The trouble is in the alignment and it is usually easy to correct. Wheels and axles are easily thrown out of line—by a bump you hardly notice at the time, by carrying a heavy load over a rough road, by sagging springs, or by applying brakes suddenly.

A CAR OUT OF LINE IS DANGEROUS

When a car is out of line, the wheels work against each other and cause wandering, weaving, hard steering, and SHIMMY, and may take your car into the ditch any minute—may cause an accident you'll always regret. We are equipped with Precision Tools that measure accurately to the sixteenth of an inch, and can give you guaranteed WHEEL AND AXLE ALIGNMENT SERVICE

Plate & Starkel, Inc.

1854-60 Ridge Avenue
EVANSTON, ILL.
Greenleaf 7180-7181

Packard

A Safe Place to Buy a Used Car

Visit Our Used Car Lot for Bargains

| | |
|--|---------|
| Cadillac 8 Type 63 Sedan-Limousine. Good condition; 6 good tires; 4-wheel brakes; good car taxi service..... | \$250 |
| Buick 1927, 51 Master 4-door Brougham; painted blue; interior immaculate; mechanically O. K., trunk, fully equipped..... | \$525 |
| Pierce-Arrow, 1927, 6-80 Roadster, with rumble seat; perfect mechanically; good paint and tires; 4-wheel brakes..... | \$850 |
| La Salle Late 1927 Convertible Coupe; appearance perfect; used very little; tires excellent; wonderful value | \$925 |
| Packard 6, 4-33 Club Sedan; driven little for this model; O. K. mechanically; nice-appearing; 5 new tires, equipped | \$925 |
| Packard 6, 4-26 Phaeton; painted 2-tone blue-gray; motor completely rebuilt; renicked; new top, boot and curtains; a real beauty and only..... | \$975 |
| Packard 8, 4-43 Deluxe Sedan; 6 new tires; motor and chassis rebuilt; new-car appearance; guaranteed | \$2,250 |

PACKARD MOTOR CAR COMPANY OF CHICAGO, Hubbard Woods Branch
Winnetka 3070 925 LINDEN AVENUE Greenleaf 6030