

HOME AND



GARDEN

"Soil Management" Will Be Theme for Lecture

Arrangements have been made to have Dr. J. F. Fonder give a lecture on "Soil Management" in connection with the regular meeting of the North Shore Horticultural society, to be held at Anderson hall, May 12, at 8:30 o'clock. This subject is of vital inter-

est to all those in the gardening profession.

A cordial invitation is extended to all those interested, regardless of whether they are members of the North Shore Horticultural society or not.

Dr. Fonder is well qualified to talk on the subject and will give many practical pointers that will be of help to those interested in gardening.

Adventures in Gardening by J. R. Foote

MOVING SHRUBS IN FULL LEAF

There are many occasions for transplanting shrubs, hedging and small trees in midsummer. While this is

moved with no apparent injury, they will show a retarded growth in succeeding seasons, we have not only disproved all these statements, but have

Let Us Help You with Your Landscape Problems

While most persons usually have excellent ideas in a general way, they often do not have sufficient familiarity with the various types of plants to be enabled to select and arrange them to the best advantage. Our experienced and trained representatives are at your service . . . always.

An Exceptional Opportunity Now

We are just clearing seventy-five acres of our nursery land and are offering a large assortment of the very finest Trees, Evergreens, and Shrubs at Very Attractive Prices. Let us quote you on your requirements. We cordially invite you to visit our nurseries, or a phone call will bring our representative.

F. D. Clavey
Ravinia Nurseries, Inc.

The Lake Shore's Largest Nurseries

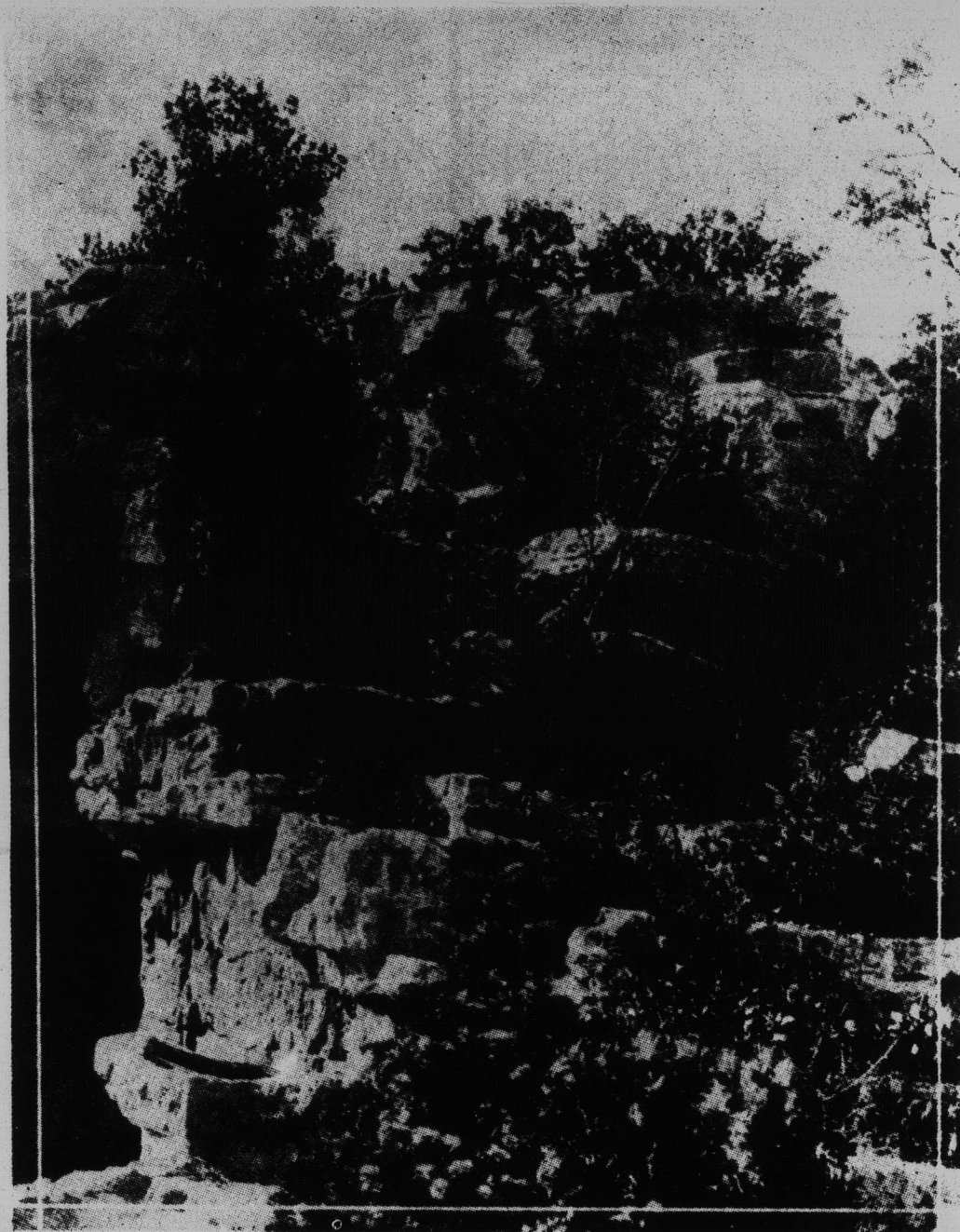
Office and
Nurseries



DEERFIELD,
ILLINOIS

Open Sundays

Telephones: Deerfield 35 or 36 — Highland Park 36



being done constantly, especially in crowded city areas, it is generally very poorly done.

In the very face of profuse advice, that, even though plants may be

shown that there is less loss than in dormant plantings.

It is true that there is more care and labor involved, but on the other hand, gardeners are not so rushed during the midseason months.

In general, roses and such shrubs as have coarse roots, can not be moved to advantage, the Syringa (Philadelphia) being an exception. Some bushes will suffer from such moving, Cornus, Viburnums, Hydrangias and Lilac types being noticeable in this respect. This difficulty can be lessened by partially stripping the leaves before lifting the plants. Syringa (Phil.) will usually lose the leaves, but will throw new leaves very quickly.

Employ Different Method

Summer planting must be done very differently from dormant planting. Unless plants so moved are given the proper care, they will die or else become hopelessly weakened. A weak shrub like a runt pig, is of no value.

It is best with summer plantings, to take up the plants for moving when the ground in the nursery is very dry. One reason for this is that the dry soil clings to the roots better. Then again, shrubs moved from the nursery rows on witheringly hot days and during dry weather, and then given proper care



Beautiful Landscape Effects

—not dependent upon size of estate

SOME of the very prettiest landscape effects in the North Shore district have been secured by owners of the smaller estates, through careful planning and the aid of Swain Nelson & Sons Co., expert landscape gardeners.

This pleasing formal arrangement of the forecourt in the estate of Mr. Ed. P. Price, Winnetka, Ill., offers ample evidence of this fact.

LET US PLAN WITH YOU

Without charge, we will send one of our expert Landscape Gardeners to consult with you concerning any planting problem. Simply write or phone.

Swain Nelson & Sons Co.

Glenview, Ill.

Phone Glenview 87 or 88