

SIGN
OF
SERVICE
SINCE 1884

Quinlan and Tyson, Inc.

REALTORS

Glenview

OFFICES ALSO IN EVANSTON, WINNETKA, DEERFIELD & LAKE FOREST

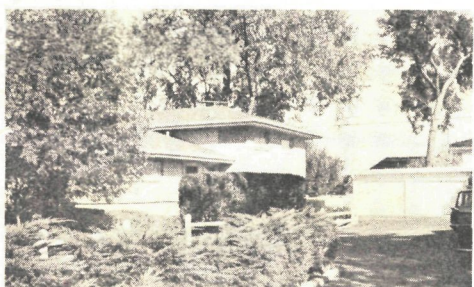
... 225 GLENVIEW ROAD • Phone: PA 4-5800

Listen to "REAL ESTATE GUIDELINES" on WEEF radio (1430 AM, 103.1 FM) at 9:45 a.m., Monday through Friday

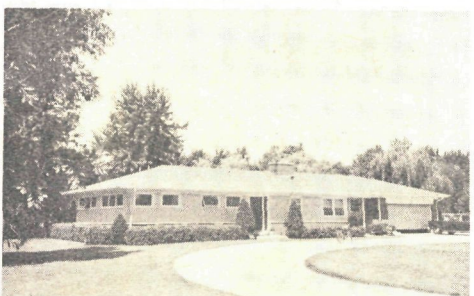
HOMES
APARTMENTS
INSURANCE
FINANCING



Move in today! Here's a gracious Colonial offering comfortable country living in Glenview's top prestige area. 4 family bedrooms, 3 1/2 baths, 4 fireplaces, paneled family room, screened porch and privacy galore! A true charmer! \$74,500.



Immaculate three-bedroom, 2 1/2-bath split-level with huge family room, big kitchen and beautiful landscaping. 2-car garage — Around the corner from Avoca West grade school. \$40,000.



An excellent floor plan is only one of the advantages offered in this brick and frame ranch in East Glenview. There is, also, a stone fireplace, kitchen with ALL the built-ins, 2 car heated garage and beautiful landscaping. \$36,500.



Roomy Cape Cod with 3 bedrooms, nursery and 2 baths. Living rm. w/fpl., dining rm., family rm., good kitchen, full bsm't., att. garage. Aluminum siding for no care. Owner has purchased house in East, immediate occupancy. \$40,950.



A choice home for the small family. Professionally decorated. All carpeted. LR with fireplace, separate dining room with corner cabinets, charming kitchen, 2 large bedrooms, 1 1/2 baths. Walk to everything. \$29,900.



GLEN AYRE PARK

- Southern Colonial
- Only six years old
- Nine lovely rooms
- Kitchen w/ALL built-ins
- Four fireplaces
- Panelled family room
- Heated, panelled porch
- Full basement w/panelled recreation room
- Pastel & pretty throughout
- Plum, cherry & apple trees
- Circular driveway
- Beautiful on-half acre



EAST KENILWORTH

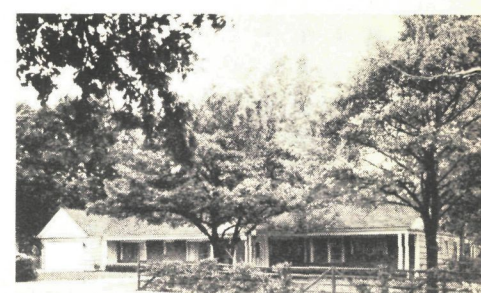
- Brick, stone and timber
- All new interior
- Gay, colorful wallpapers
- Leaded glass windows
- 10 rooms
- Lovely new carpeting
- Log burning fireplace
- Stunning entrance hall
- Tall shade trees
- Garages for 3 cars
- Large landscaped lot
- Walk to everything



EAST WILMETTE

Around the corner from St. Francis & Central Schools

- Four bedrooms
- 2 1/2 baths
- 22 x 20 family room
- Living room w/fireplace
- Screened summer house
- Oversized oven — 6 burner stove
- Walk to NW RR & shopping
- Recreation Room
- Separate dining room
- Aluminum comb. storms & screens
- 1 1/2 car garage
- Low taxes



Just listed in Glenayre Park area — the most charming one story house you have ever seen, beautifully decorated with remodeled kitchen, 3 bedrooms, 1 1/2 baths, 2-car electric-controlled garage. \$47,500.



Fine large four bedroom true Colonial in West New Trier School District. Living room with fireplace, separate dining room, 14 ft. modern kitchen with wall oven and counter-top range. Huge family room, 2-car garage plus full basement. Must sell at once. \$38,000.

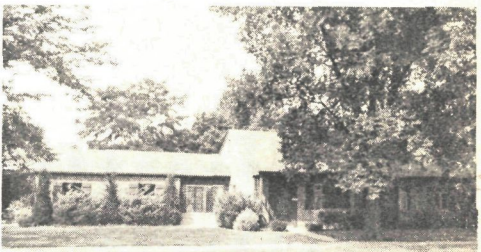


A big brick ranch in East Glenview with 5 bedrooms, 2 1/2 baths, living room with fireplace, dining room, Florida room, family room, recreation room — just \$48,500. Be sure to call us.



A DOLL HOUSE!

Ideal for newlywed or retired couple. 2 bedrooms, large living room, dinette — kitchen w/disposal. Central air-conditioning, basement, garage and beautiful garden. Convenient to transportation. Includes many extras. \$20,500.



Brick ranch — 3 bedrooms, bath and paneled den. Garage — close in Glenview location. Walk to trains, shopping, schools. Public bus at door. Only \$24,500.