

# ONTARIO HYUNDAI

Durham's Import Superstore

**0%<sup>†</sup>** FOR UP TO **96** MONTHS **OR \$7,500** GET UP TO  
**FINANCING** **MONTHS** **IN PRICE ADJUSTMENTS<sup>‡</sup>**  
 ON SELECT MODELS AMOUNT AVAILABLE ON THE 2014 SONATA HEV LIMITED

**FACTORY  
AUTHORIZED  
CLEAROUT SALE**

**HURRY IN! LIMITED QUANTITIES REMAINING!**

**OUTSTANDING CANADIAN VALUE  
ALL-IN PRICING! AWARD-RECOGNIZED CARS!**

**2014 ELANTRA GL**  
**NOW ONLY \$15,995<sup>‡</sup>**

ELANTRA GL 6-SPEED MANUAL. \$4,185 IN PRICE ADJUSTMENTS<sup>‡</sup>, FEES, DELIVERY & DESTINATION INCLUDED. PLUS HST.

**WELL EQUIPPED:**

• AIR CONDITIONING • HEATED FRONT SEATS • REMOTE KEYLESS ENTRY WITH ALARM • BLUETOOTH<sup>®</sup> HANDS-FREE PHONE SYSTEM



INCLUDES  
**\$4,185**  
 IN PRICE ADJUSTMENTS<sup>‡</sup>

**2014 SONATA GL**  
**NOW ONLY \$19,995<sup>‡</sup>**

SONATA GL AUTO. \$5,835 IN PRICE ADJUSTMENTS<sup>‡</sup>, FEES, DELIVERY & DESTINATION INCLUDED. PLUS HST.

**WELL EQUIPPED:**

• BLUETOOTH<sup>®</sup> HANDS-FREE PHONE SYSTEM • ELECTRONIC STABILITY CONTROL • HEATED FRONT SEATS • REMOTE KEYLESS ENTRY WITH ALARM



INCLUDES  
**\$5,835**  
 IN PRICE ADJUSTMENTS<sup>‡</sup>

**2014 SANTE FE SPORT**  
**NOW ONLY \$24,995<sup>‡</sup>**

SANTA FE 2.4L FWD. \$3,735 IN PRICE ADJUSTMENTS<sup>‡</sup>, FEES, DELIVERY & DESTINATION INCLUDED. PLUS HST.

**WELL EQUIPPED:**

• HEATED FRONT SEATS • AM/FM/SIRIUS XM<sup>™</sup>/CD/MP3 6 SPEAKER AUDIO SYSTEM • BLUETOOTH<sup>®</sup> HANDS-FREE PHONE SYSTEM • STABILITY MANAGEMENT



INCLUDES  
**\$3,735**  
 IN PRICE ADJUSTMENTS<sup>‡</sup>



Fendy Wong  
Gen. Sales Mgr.



Bob Chop  
Sales Manager



Nick Durani  
Sales Manager



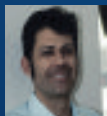
Bruce Perkins



Dan Stevens



Derek Warren



Frank Diakoumeas



Jim Cockerham



Michael Barber



Phil McLean



Rachel Lockwood



Roman Zembik

**1505 Dundas Street E., Whitby**  
**905-668-5100 or 1-866-871-6776**



Sharon Gravel



Steve Sang



Theresa Zaporozan



Frank Smith

**5 YEAR  
WARRANTY**

5-year/100,000 km Comprehensive Limited Warranty\*\*  
 5-year/100,000 km Powertrain Warranty  
 5-year/100,000 km Emission Warranty



**HYUNDAI**  
 HyundaiCanada.com

NEW THINKING.  
 NEW POSSIBILITIES.™

**www.ontariohyundaicars.com | facebook.com/ontariohyundaiwhitby**

\*Cash price of \$15,995/\$19,995/\$24,995 available on all remaining new in stock Elantra GL 6-speed Manual/Sonata GL Auto/Santa Fe Sport 2.4L FWD models. Prices include Delivery and Destination charges of \$1,595/\$1,695/\$1,795, fees, levies and all applicable charges (excluding HST). Prices exclude registration, insurance, PPSA, license fees and dealer admin. fees of up to \$499. Fees may vary by dealer. Delivery and Destination charge includes freight, P.D.E. and a full tank of gas. Price adjustments are calculated against the vehicle's starting price. Price adjustments of up to \$4,185/\$5,835/\$3,735. Price adjustments applied before taxes. Offer cannot be combined or used in conjunction with any other available offers. Offer is non-transferable and cannot be assigned. No vehicle trade-in required. Offers available for a limited time and subject to change or cancellation without notice. Dealer may sell for less. Inventory is limited, dealer order may be required. See dealer for complete details. \*\*Hyundai's Comprehensive Limited Warranty coverage covers most vehicle components against defects in workmanship under normal use and maintenance conditions.