

# Dupont Canada continues to grow

DuPont Canada Inc., Whitby site, is located on a 160 acre plant site on South Blair St. in the Port Whitby area.

The plant began operations in 1959, employing 80 people from the local community in a plant area of close to 40,000 square feet. Sclair-film, polyethylene film is the major product produced at the plant. It is used primarily to package solid and liquid foods and paper items. The most widely known end use is in the milk pouch, which is sold in food stores across the country.

Over its 28 years of operation, the DuPont plant has expanded its operations 11 times. In 1960, facilities were installed to produce Vexar plastic netting. This multi-use product can be found in numerous types of plastic netting ranging from fencing to vegetable packaging to pool filters. Dartek nylon film manufacturing facilities were installed in 1972 to produce nylon packaging films for meat and cheese products, as well as for specialized industrial applications. A third expansion of the facilities will begin operations in 1988 to serve an even broader market.

Today, DuPont's Whitby site employs close to 300 people in a plant of more than 215,000 square feet. The latest expansion occurred last year with the investment of \$4.1 million to upgrade process equipment, install computer facilities and expand office and laboratory space to accommodate sales and marketing functions.

Safety has always been an integral part of the operation of DuPont plants and has resulted in DuPont being consistently rated as having one of the best safety records in North America. This success is the result of the commitment of all DuPont employees to work in a safe manner.

Being a valued member of the local community is also an important part of the operation of DuPont's Whitby site. Through wages, salaries and local purchases, the site contributes to the local economy. Many employees make personal contributions of their time and money in support of community activities. It is the intent of DuPont Canada Inc. and its people to work hand-in-hand with the community to continue to make Whitby a better place to live.



Whitby harbour and marina

## One stop shopping at Whitby mall

A large and important part of the Whitby shopping scene is at the corner of Dundas St. E. and Thickson Rd.

And the Whitby mall will soon be even larger when the latest addition is completed, to provide a total of more than 50 stores.

Anthony Lang, president of Tije Limited which owns the mall and the Lang Tower Office Complex, explains that efforts to upgrade the mall are to please existing as well as new residents to Whitby. While stores are being added, others are being enlarged, rebuilt and modernized.

The retail sales area of the Miracle Food Mart at the south end of the mall will double in size. The store will be open 24 hours a day.

The Super X drug store, open seven days a week, will be enlarged. The addition includes a new Bank of Montreal, complete with instant teller.

The addition will also provide a fashion-oriented shopping concourse, selling men's, women's and children's clothing and sportswear.

Among the new stores are The Daily Planet, a magazine and bookstore; Wrap It Up, a card and gift shop; Frederick's Men's Wear; Rivers Active Wear; the Shoe Terminal, which opened last December; Fashion Accessories; Master-down Bedding; A & A Records; Shira's of Whitby, a jeweler.

Mr. Lang said his company is actively searching for a variety of new merchants, with some space available for lease. He invites applications for new retail stores. To inquire, call 579-2515 or send to Tije Limited, 1615 Dundas St. E., Whitby, L1N 2L1 (Anthony Lang, president, or Mara Parks, administrator).

Mr. Lang added that work will be carried out to change the architectural appearance of the Woolco Store. Woolco and the Miracle Food Mart were the 'anchors' when the mall opened in 1970, with about 20 other stores.

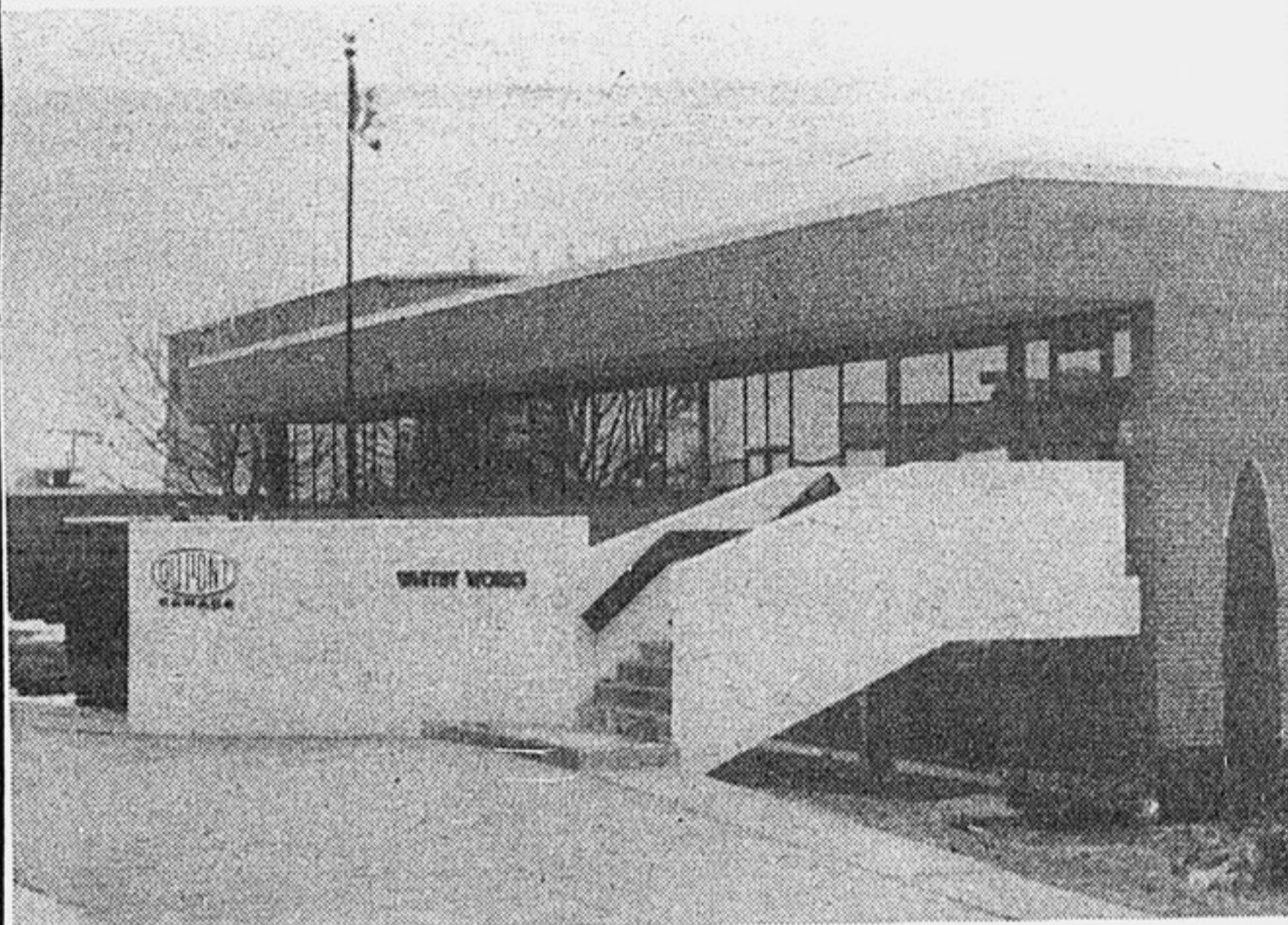
The mall underwent expansion in 1980. The Lang Tower east wing was built to provide corporate offices as well as offices for dentists and doctors. The wing also includes a liquor store.

The mall also has office space for General Motors and EDS Canada Ltd. McDonald's and Arby's, both open till early morning hours, are free-standing restaurants at different ends of the mall parking lot.

There is easy access to the mall from Dundas St. and Nicol Ave. (traffic can turn both right and left) while there is controlled access from a traffic light on Thickson Rd.

Mr. Lang extends a warm welcome to residents who have chosen the community as their new home.

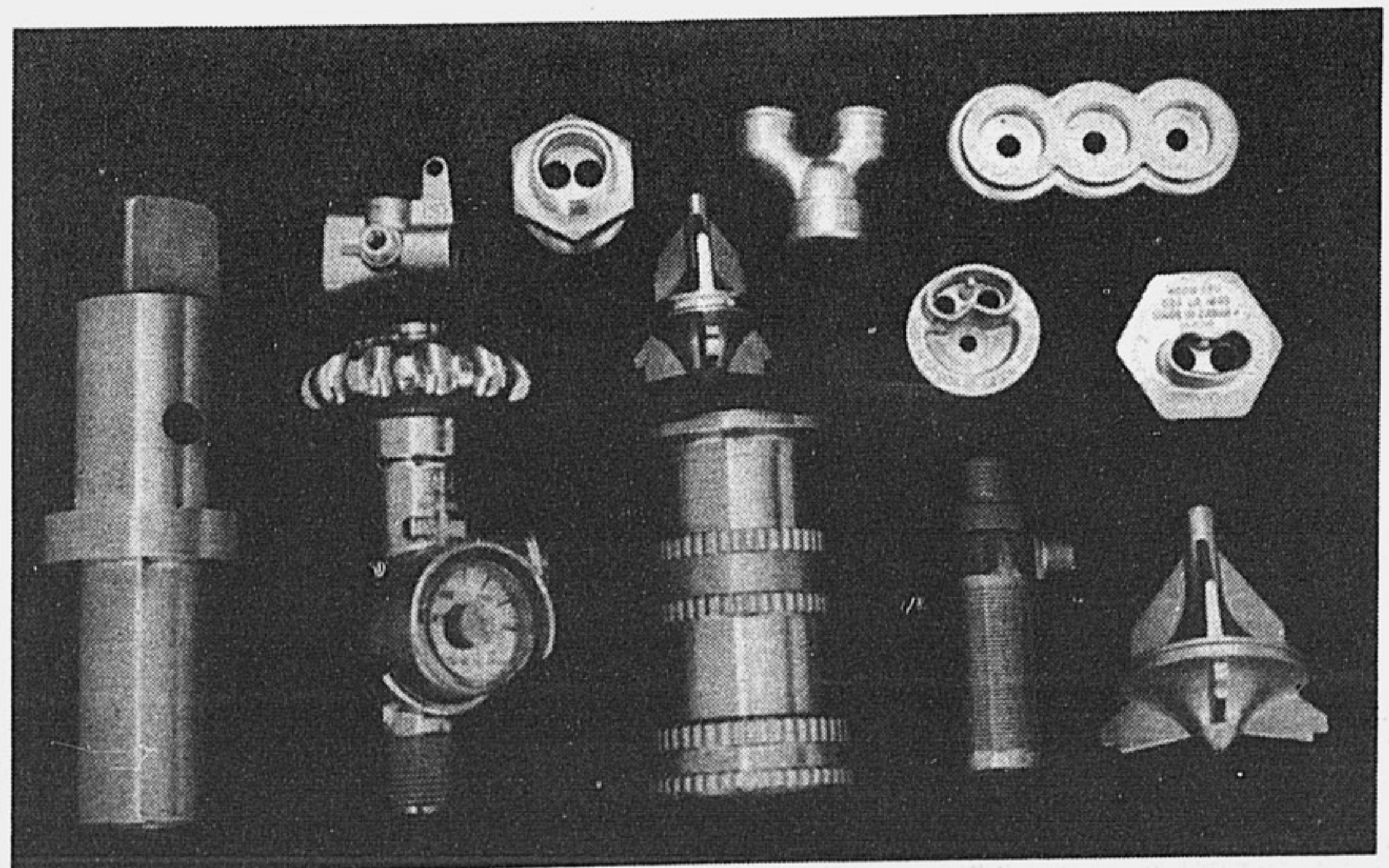
### PROGRESSING WITH WHITBY



Manufacturers of  
SCLAIR POLYETHYLENE FILM,  
DARTEK NYLON FILM, and  
VEXAR PLASTIC NETTING

WHITBY SITE  
WHITBY, ONTARIO

### QUALITY COMPONENTS for CANADIAN INDUSTRIES



**LOFTHOUSE BRASS  
MANUFACTURING LTD**

310 Hopkins St., Whitby