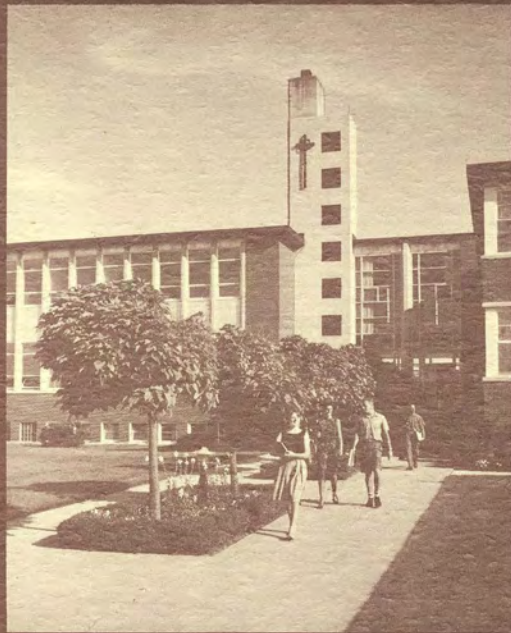


**WATERLOO  
LUTHERAN  
UNIVERSITY**



Waterloo University College  
Waterloo Lutheran Seminary  
75 University Avenue West  
Waterloo, Ontario  
(519) 744-8141





## A MODERN CAMPUS

With thirteen building units on a 25-acre block, the WLU campus is modern and compact. Ten building units have been erected since 1960 and two more will be built on completion of the current fund campaign.

The campus is located in the heart of Waterloo in central-western Ontario. Within easy reach are shopping facilities in Waterloo and Kitchener, the world-famous Stratford Shakespearian Festival and the performing arts events in Toronto.

Facilities, especially during the summer, are open for use by educational, civic, religious, fraternal and athletic organizations.

◀ View from Albert Street of the Arts Building and the new Arts Wing

Convention luncheon scene in Dining Hall

You are cordially invited to come to the campus of Waterloo Lutheran University.

### For Use of Facilities

For conventions, workshops, seminars, retreats, dinner meetings and other special events, contact Miss Tamara Giesbrecht, Business Manager.

### For Academic Work

For academic work — regular sessions — contact Mr. John M. Kopas, Registrar.

### For Summer Sessions

For academic work — summer sessions and extension courses — contact Professor James M. Clark, Director of Extension Division and Summer Sessions.

### For Theological Courses

For courses in Waterloo Lutheran Seminary — full time and extension — contact Dr. J. Ray Houser, President of Waterloo Lutheran Seminary.



Executives attend management seminar in Dining Hall mezzanine

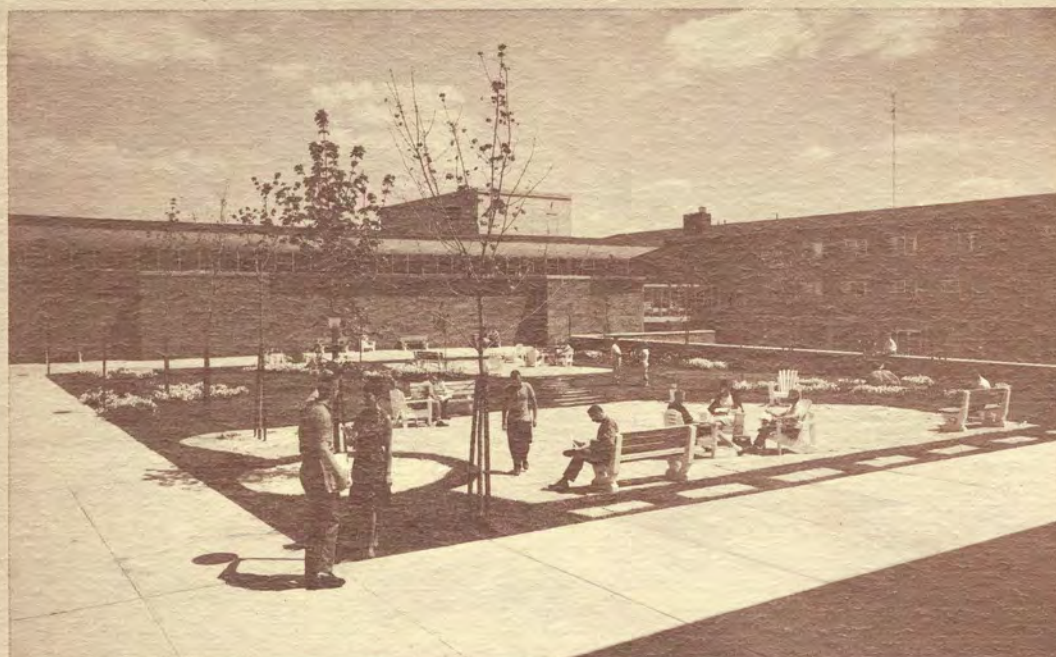
## UP-TO-DATE FACILITIES

**Residences** accommodate 475 persons—150 in the women's residence and 325 in three men's residences. Three of the modern buildings have recreation rooms, TV rooms and lounges.

**The dining hall**, which opened in 1962, has facilities for more than 500 persons. Additional features are private mezzanine dining rooms and lounges available for small dinner parties, teas and receptions.

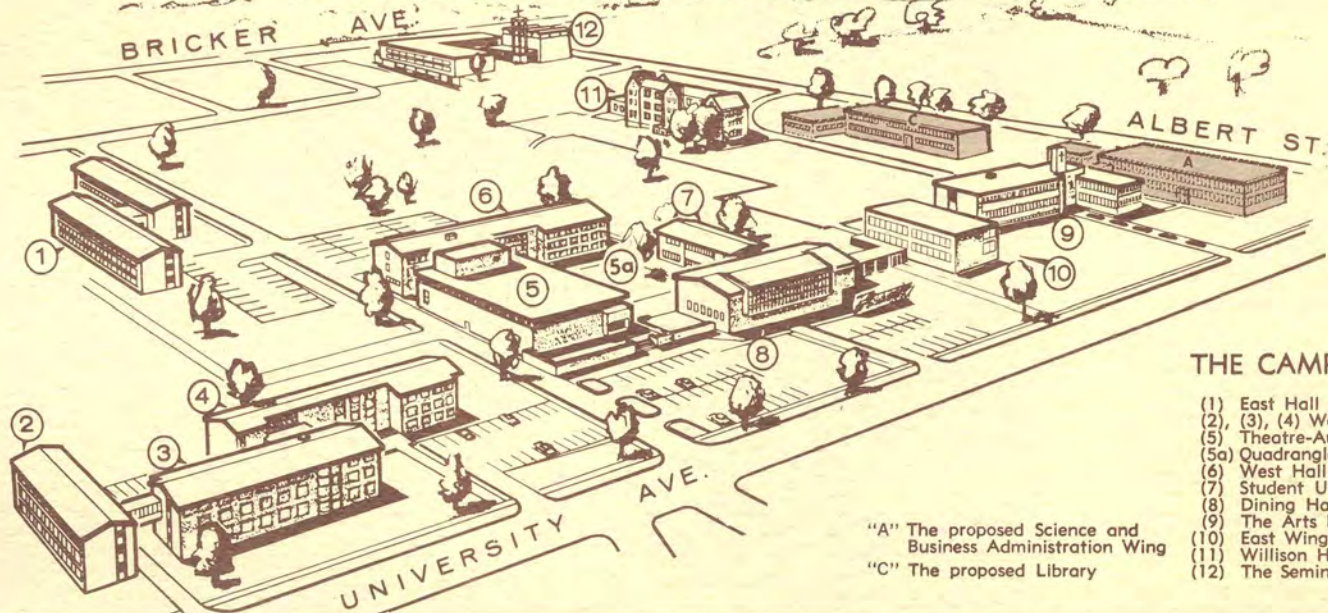
**The theatre-auditorium** has full stage and sound facilities; will seat 1,400 people.

◀ Mid-campus quadrangle, bounded by Theatre-Auditorium and Residence unit





# THE CAMPUS OF WATERLOO LUTHERAN UNIVERSITY

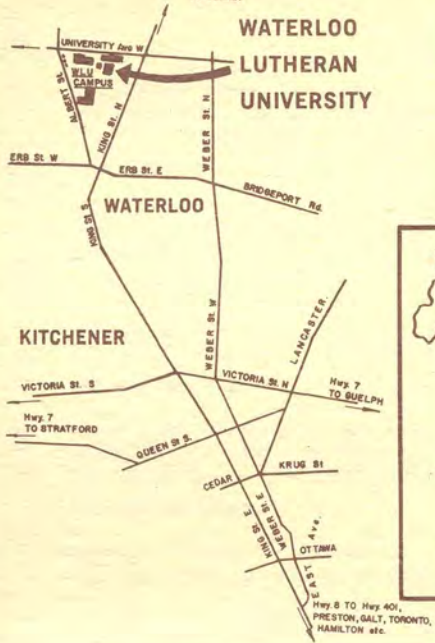


## THE CAMPUS

- (1) East Hall - Men's Residence
  - (2), (3), (4) Women's Residences
  - (5) Theatre-Auditorium
  - (5a) Quadrangle
  - (6) West Hall - Men's Residence
  - (7) Student Union Building
  - (8) Dining Hall
  - (9) The Arts Building
  - (10) East Wing of Arts Building
  - (11) Willison Hall - Library
  - (12) The Seminary
- "A" The proposed Science and Business Administration Wing  
 "C" The proposed Library

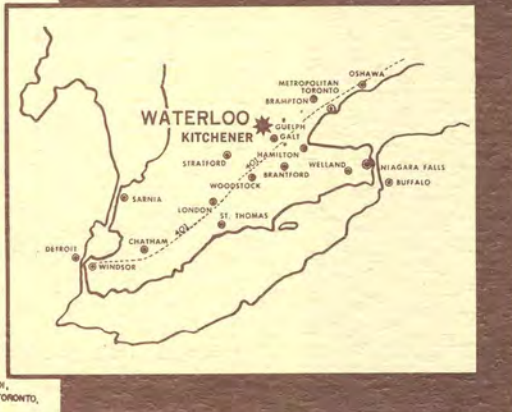
Hwy. 05  
TO ELMIRA

# WATERLOO LUTHERAN UNIVERSITY



## TRAVEL DIRECTIONS TO WATERLOO LUTHERAN UNIVERSITY CAMPUS, WATERLOO, ONTARIO

For the purpose of description, the cities of Kitchener-Waterloo may be taken as one. Located seventy-two miles west of Toronto, Kitchener is bordered on the north-west by Waterloo.



**TORONTO to WATERLOO:** Take Highway 401 west to interchange No. 35, then Highway 8 west into Kitchener and follow King St. to University Avenue.

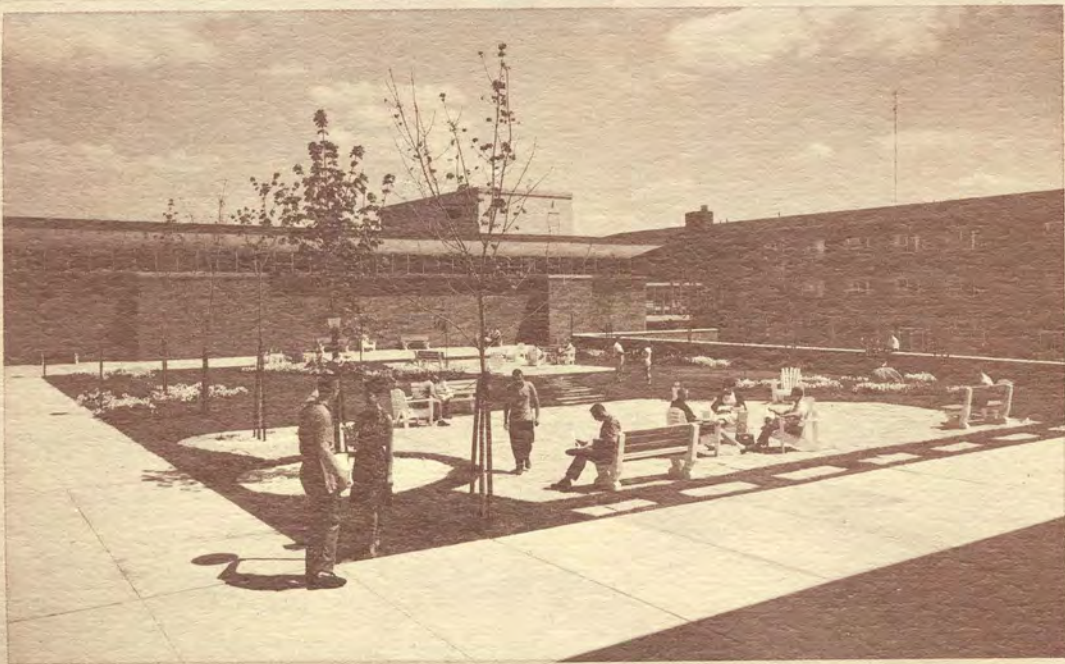
**LONDON to WATERLOO:** Take Highway 401 east to interchange No. 35, then Highway 8 west into Kitchener and follow King St. to University Avenue.

**HAMILTON to WATERLOO:** Take Highway 8 directly to Kitchener and follow King St. W. to University Avenue.

**Alternative** — Take Highway 6 to Highway 401 west to interchange No. 35, then Highway 8 west into Kitchener and follow King St. to University Avenue.

**OWEN SOUND to WATERLOO:** Take Highway 6 to Guelph, Highway 7 to Kitchener; Highway 7 (Victoria St. N.) to King St. W. (Highway 85); turn right, follow King St. W. to University Avenue.





▲ Executives attend management seminar in Dining Hall mezzanine

## UP-TO-DATE FACILITIES

**Residences** accommodate 475 persons—150 in the women's residence and 325 in three men's residences. Three of the modern buildings have recreation rooms, TV rooms and lounges.

**The dining hall**, which opened in 1962, has facilities for more than 500 persons. Additional features are private mezzanine dining rooms and lounges available for small dinner parties, teas and receptions.

**The theatre-auditorium** has full stage and sound facilities; will seat 1,400 people.

◀ Mid-campus quadrangle, bounded by Theatre-Auditorium and Residence unit

You are cordially invited to come to the campus of Waterloo Lutheran University.

#### **For Use of Facilities**

For conventions, workshops, seminars, retreats, dinner meetings and other special events, contact Miss Tamara Giesbrecht, Business Manager.

#### **For Academic Work**

For academic work — regular sessions — contact Mr. John M. Kopas, Registrar.

#### **For Summer Sessions**

For academic work — summer sessions and extension courses — contact Professor James M. Clark, Director of Extension Division and Summer Sessions.

#### **For Theological Courses**

For courses in Waterloo Lutheran Seminary — full time and extension — contact Dr. J. Ray Houser, President of Waterloo Lutheran Seminary.





## A MODERN CAMPUS

With thirteen building units on a 25-acre block, the WLU campus is modern and compact. Ten building units have been erected since 1960 and two more will be built on completion of the current fund campaign.

The campus is located in the heart of Waterloo in central-western Ontario. Within easy reach are shopping facilities in Waterloo and Kitchener, the world-famous Stratford Shakespearian Festival and the performing arts events in Toronto.

Facilities, especially during the summer, are open for use by educational, civic, religious, fraternal and athletic organizations.

◀ View from Albert Street of the Arts Building and the new Arts Wing

Convention luncheon scene in Dining Hall

