



At the recent grand opening of the newest location of WAXON WAXBAR, its seventh is in Oakville at 461 Cornwall Rd. Pictured, from left, are: Kate Bradley, manager; Amy Burns, operations manager; and founder Lexi Miles, with some of the shop's body cocktails including loofah scrubs and body oils. For more information, visit www.waxon.ca.

| photo by Graham Paine – Oakville Beaver (Follow on Twitter @halton_photog or facebook.com/HaltonPhotog)

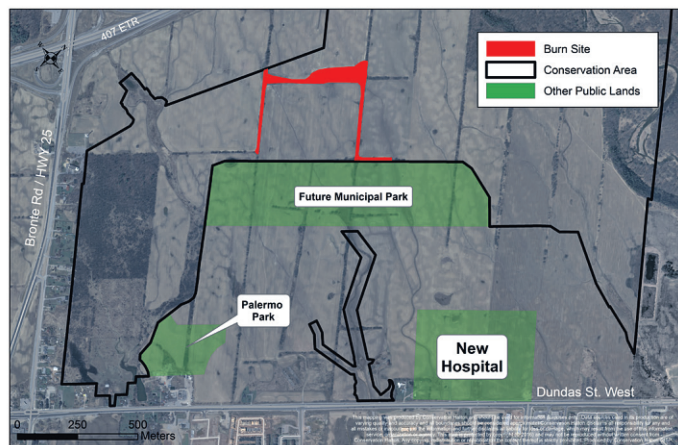
GLENORCHY CONSERVATION AREA 2016 PRESCRIBED BURN SITE

Conservation Halton is planning a prescribed burn to take place sometime during the period of mid-March to early April at Glenorchy Conservation Area in Oakville.

During the next few weeks, Conservation Halton staff will monitor Glenorchy Conservation Area. When conditions are suitable, 48 hours notice will be given to surrounding landowners.

A prescribed burn is a deliberately set, carefully planned and controlled fire which consumes dried leaves, needles, and small twigs. The practice is a widely used and recognized scientific method of controlling out-competing, non-fire tolerant invasive species, allowing for growth and encouraged regeneration of the naturally occurring historical trees, grasslands and planted seedlings.

Smoke from the burn is not expected to disturb surrounding neighbourhoods. It is possible, however, that some smoke may reach residential areas near the conservation area.



Glenorchy Conservation Area is managed by Conservation Halton and is owned by the Province of Ontario (Infrastructure Ontario).

For more information about the prescribed burn, please call Conservation Halton at 905.336.1158 email web@hrca.on.ca or visit conservationhalton.ca



UNLOCK A DEAL



EVENT IS BACK!

ALL-NEW 2016 CIVIC AVAILABLE WITH A 1.5 LITRE, TURBOCHARGED, 4-CYLINDER ENGINE* WITH 174 HP* AND HONDA SENSING™ TECHNOLOGIES.



2016 CIVIC TOURING
MODEL SHOWN



AUTOMOBILE JOURNALISTS
ASSOCIATION OF CANADA

CANADIAN CAR
OF THE YEAR



2016 NORTH AMERICAN
CAR OF THE YEAR



18
CIVIC

Canada's
best-selling car
18 years in a row.**

2016
CIVIC LX FROM
\$57@ 2.99% APR

WEEKLY LEASE FOR 60 MONTHS:†
EXCLUDES LICENCE AND HST.

\$0 SECURITY DEPOSIT
DOWN PAYMENT/OAC

2016 CIVIC LX
MODEL FC2E5GE

2016
CR-V LX FROM
\$72@ 1.99% APR

WEEKLY LEASE FOR 60 MONTHS:†
EXCLUDES LICENCE AND HST.

\$0 SECURITY DEPOSIT
DOWN PAYMENT/OAC



MODEL RM3H3GE1



MODEL CR2E3GE

NEW 2016
ACCORD LX FROM
\$73@ 3.99% APR

WEEKLY LEASE FOR 60 MONTHS:†
EXCLUDES LICENCE AND HST.

\$0 SECURITY DEPOSIT
DOWN PAYMENT/OAC



HondaOntario.com
Ontario Honda Dealers

LEASE PAYMENTS INCLUDE FREIGHT AND PDI.
DEALER ORDER/TRADE MAY BE NECESSARY.



Limited time lease offers available through Honda Financial Services Inc. (HFS), to qualified retail customers on approved credit. Weekly payments include freight and PDI (ranges from \$1,595 to \$1,695 depending on model), EHF tires & filters (\$22.25), A/C charge (\$100), and OMVIC fee (\$10). Taxes, licence, insurance and registration are extra. †Representative weekly lease example: 2016 Civic LX Sedan 6MT (Model FC2E5GE) // 2016 CR-V LX 2WD (Model RM3H3GE1) // 2016 Accord LX Sedan 6MT (Model CR2E3GE) on a 60-month term with 260 weekly payments at 2.99% // 1.99% // 3.99% lease APR. Weekly payment is \$56.87 // \$71.82 // \$72.68 with \$0 down or equivalent trade-in and \$210 // \$280 // \$530 total lease incentive included. Down payments, \$0 security deposit and first weekly payment due at lease inception. Total lease obligation is \$14,785.43 // \$18,674.48 // \$18,896.46. 120,000 kilometre allowance; charge of \$0.12/km for excess kilometres. PPSA lien registration fee of \$45.93 and lien registering agent's fee of \$5.65, due at time of delivery are not included. For all offers: licence, insurance, other taxes (including HST) and excess wear and tear are extra. Taxes payable on full amount of purchase price. Offers only valid for Ontario residents at Ontario Honda Dealers. Dealer may lease for less. Dealer order/trade may be necessary. Colour availability may vary by dealer. Vehicles and accessories are for illustration purposes only. Offers, prices and features subject to change without notice. See your Ontario Honda Dealer or visit HondaOntario.com for full details. **Based on Association of International Automobile Manufacturers of Canada (AIAMC) data reflecting sales between 1997 and December 2015. *Only available on 2016 Civic EX-T and Touring Sedan models. †Horsepower and torque calculations reflect SAE net, Rev. 08/04, SAE J1349 procedures.