

NEWS AND INFORMATION FROM MILTON DISTRICT HOSPITAL

NOVEMBER 2016

A glimpse of the future Milton District Hospital (MDH)

As construction of the Milton District Hospital (MDH) expansion continues to progress rapidly toward substantial completion, architectural renderings of the new expansion help us to imagine how the new spaces will look and feel. The 330,000 sq. ft. expansion will combine innovative architecture and the latest in technology to deliver high quality patient and family-centred care and **exemplary patient experiences, always**. Renderings courtesy of Plenry Health Milton.



Emergency Department Entrance



Main Entrance



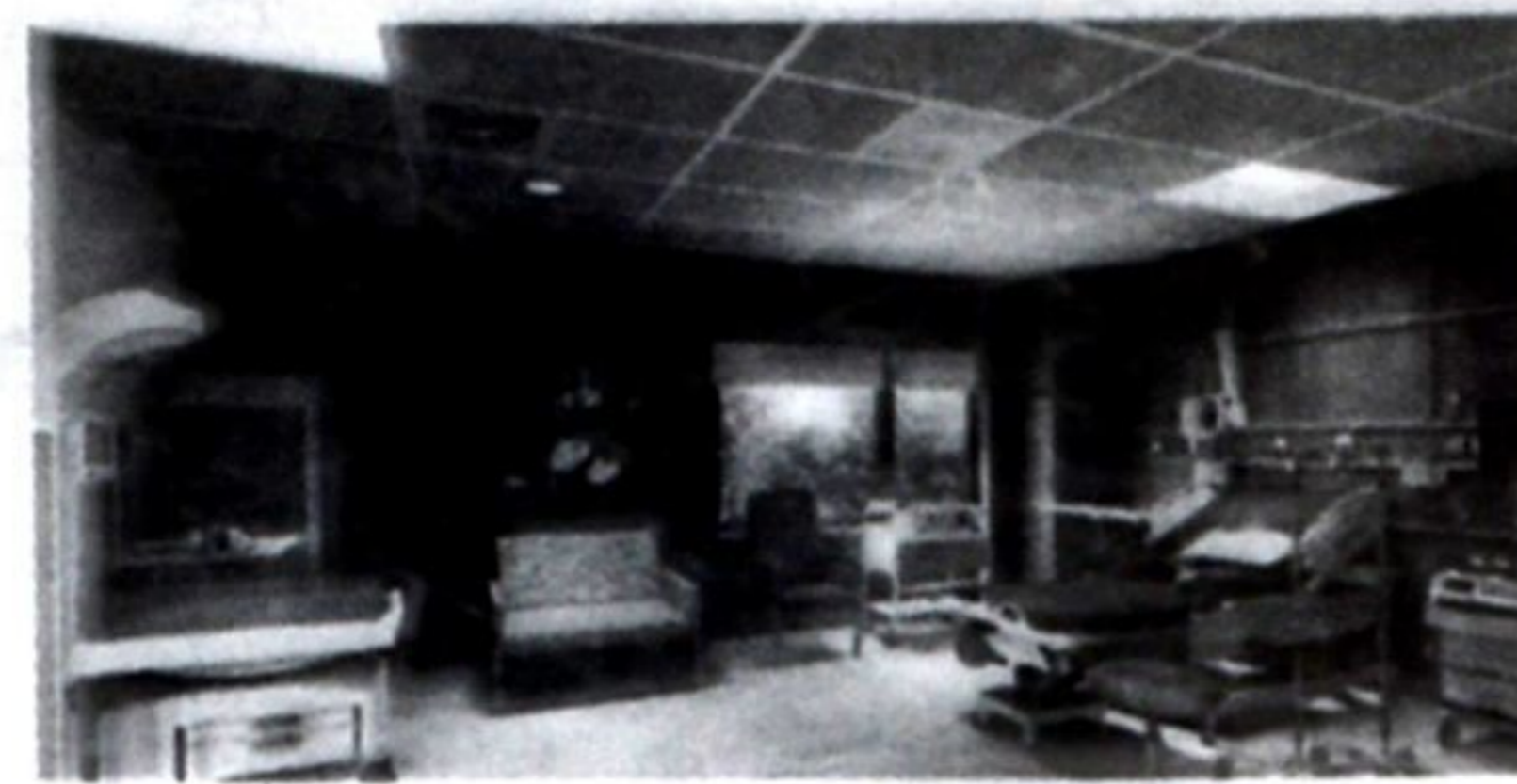
Main Lobby



Diagnostic Imaging waiting room



Typical single patient room



Labour, Birth, Recovery, Postpartum room

QUICK FACTS

New Main Entrance with access from Bronte Street South

4Xs larger Emergency Department

Milton's first MRI scanner

Increased capacity from 63 to 129 inpatient beds

80 per cent single patient rooms

Opening Fall 2017

Foundation's Holiday Appeal Launched

We're close but we need your help with the last mile of our fundraising. By now many residents will have received the Milton District Hospital Foundation's Holiday Appeal in the mail. To date, the community has generously donated \$25 million but we are still \$5 million short of our goal. All funds raised will be used to purchase needed equipment for our newly expanded hospital, as medical equipment is not funded by the government. **Give generously. We're in this together.**



Stay connected! For more information please visit our website, www.haltonhealthcare.com.



our home
**OUR
HOSPITAL**
we're in this together