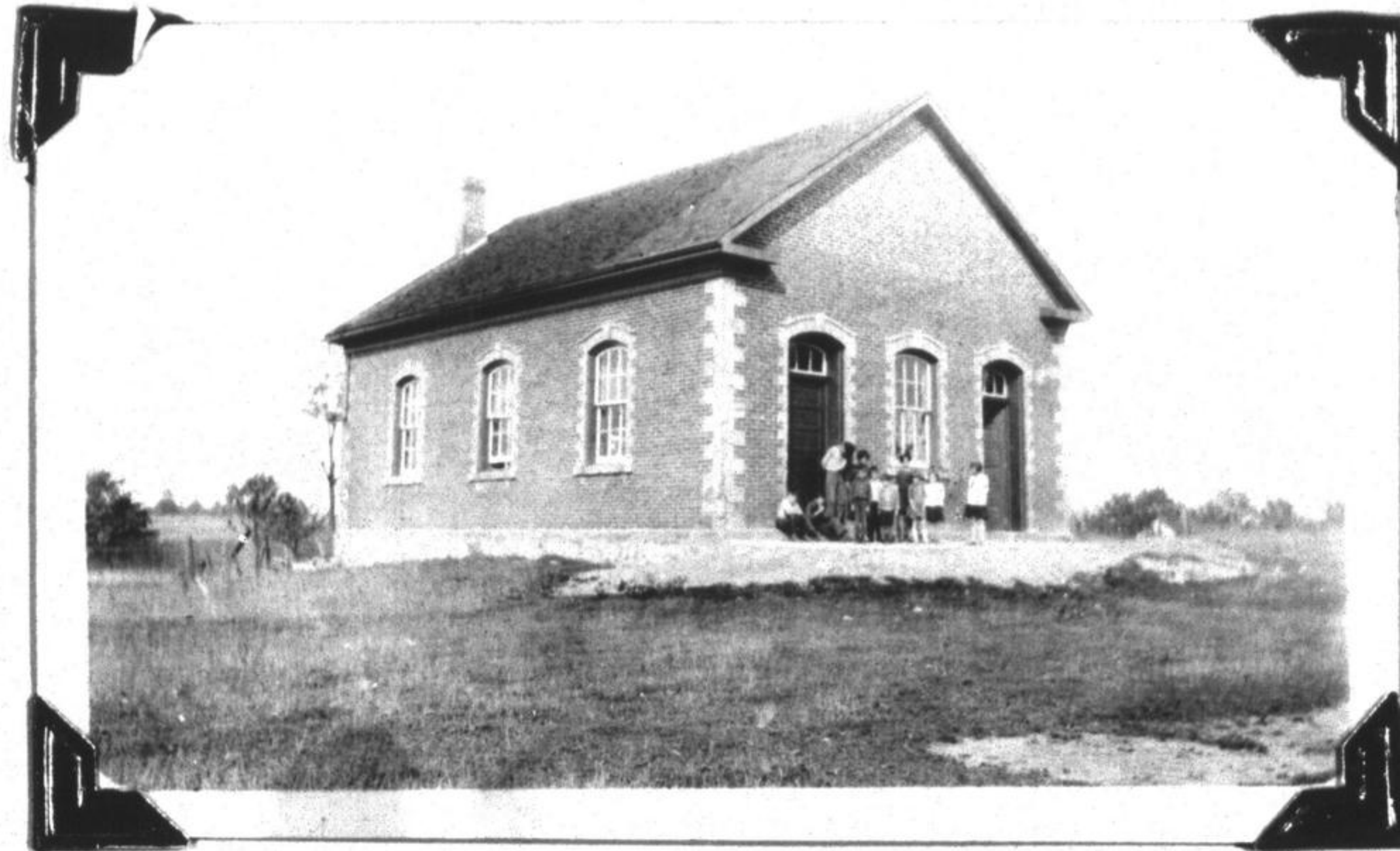


## Schools

The school which first served the village of Waldemar was on Concession 9 on a part of Robert Carter's farm. This was about a mile from the village. A new school, the one

pictured  
built in  
1879, and  
is still  
There were  
plaints  
north end  
section  
the great  
some child-  
travel.



above, was  
the year  
this building  
in use (1947)  
many come  
from the  
of the  
regarding  
distance  
ren had to  
As a result  
school was

another  
built on 5 sideroad at the 9th line corner. For some years this school was called the Branch but later became a regular school section, by name No. 21 Amaranth.

The land for S.S. No. 5 was purchased from Joseph Lomas. A public road was surveyed west of the school leading to a tannery, and another east-west road was surveyed which would have been a short distance south of the school. This no doubt explains the fact that the buildings faced south. Neither of these roads were ever opened.

Water was first obtained from a spring on the Lomas farm and was piped into the school, but as it made a muss in the school-room a pump house was built outside. None of these systems were satisfactory so a well was dug. The average attendance in those early years was around sixty.

At one time the south side of the school blew in, during a heavy storm. The date stone was destroyed but the wall was repaired. For a time the belfry and bell was not replaced. During the time the wall was being replaced, school routine was carried on in the basement of the Presbyterian Church.

Later on, a partition was built making the class-room smaller and providing a play-room.