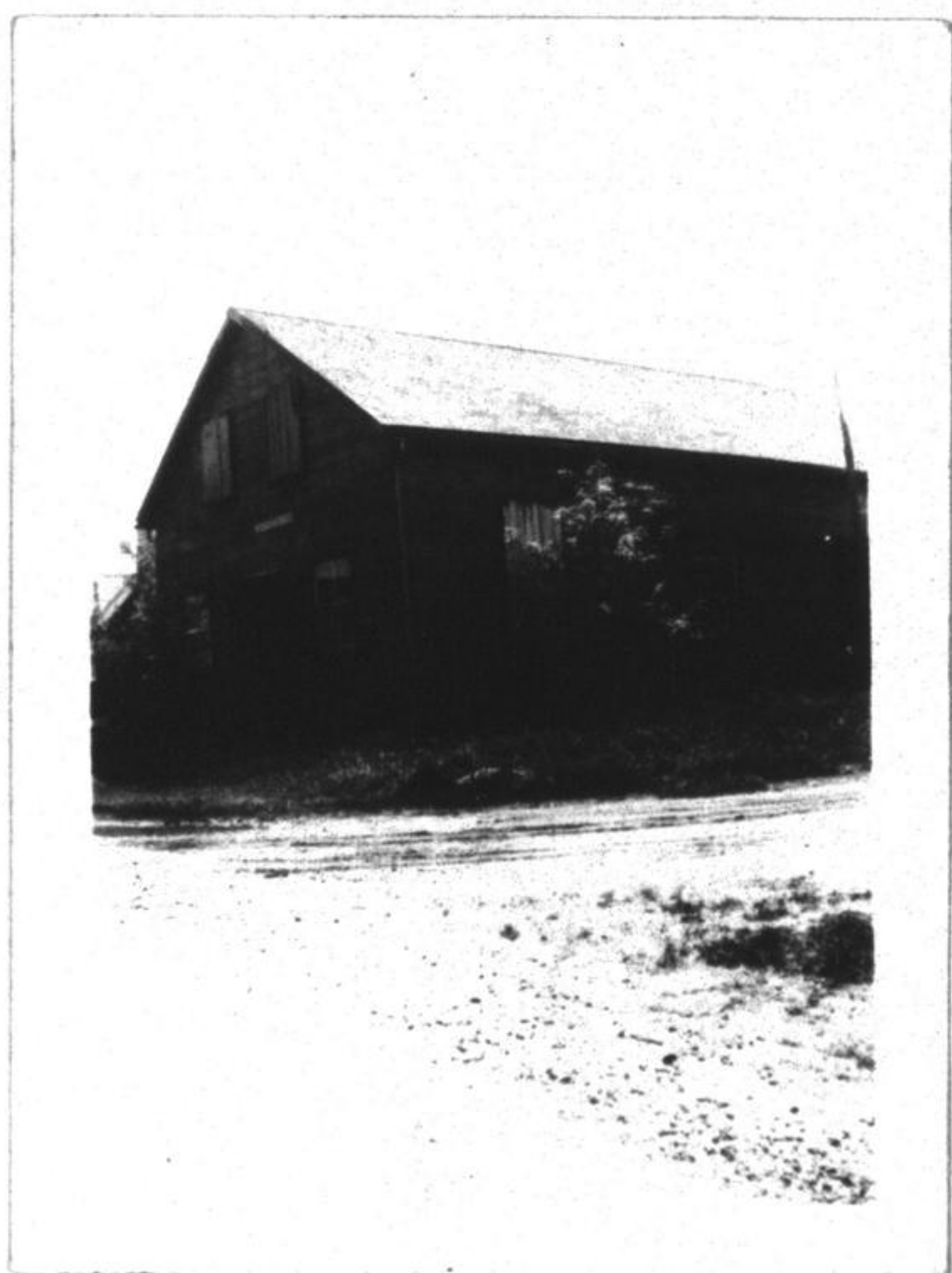


This house was built by the Jeh nsens who owned most of the property around Waldemar. It was later made the Pr esbyterian Manse, then later a store was built r ight beside it by David Watsen around the year 1925. Business was sold to a Mr. Brisben, then James MacCallum, John Densmore and Hirem Evans. In 1964 Emersen Rodgers bought it .He tere down some of the store part.



Harvey McCenachie built the chopping mill on the left and used it as such until he sold it to Wm. Miller. When it was used as a blacksmith shop. Many years later it was sold to Mr. Willeughby.