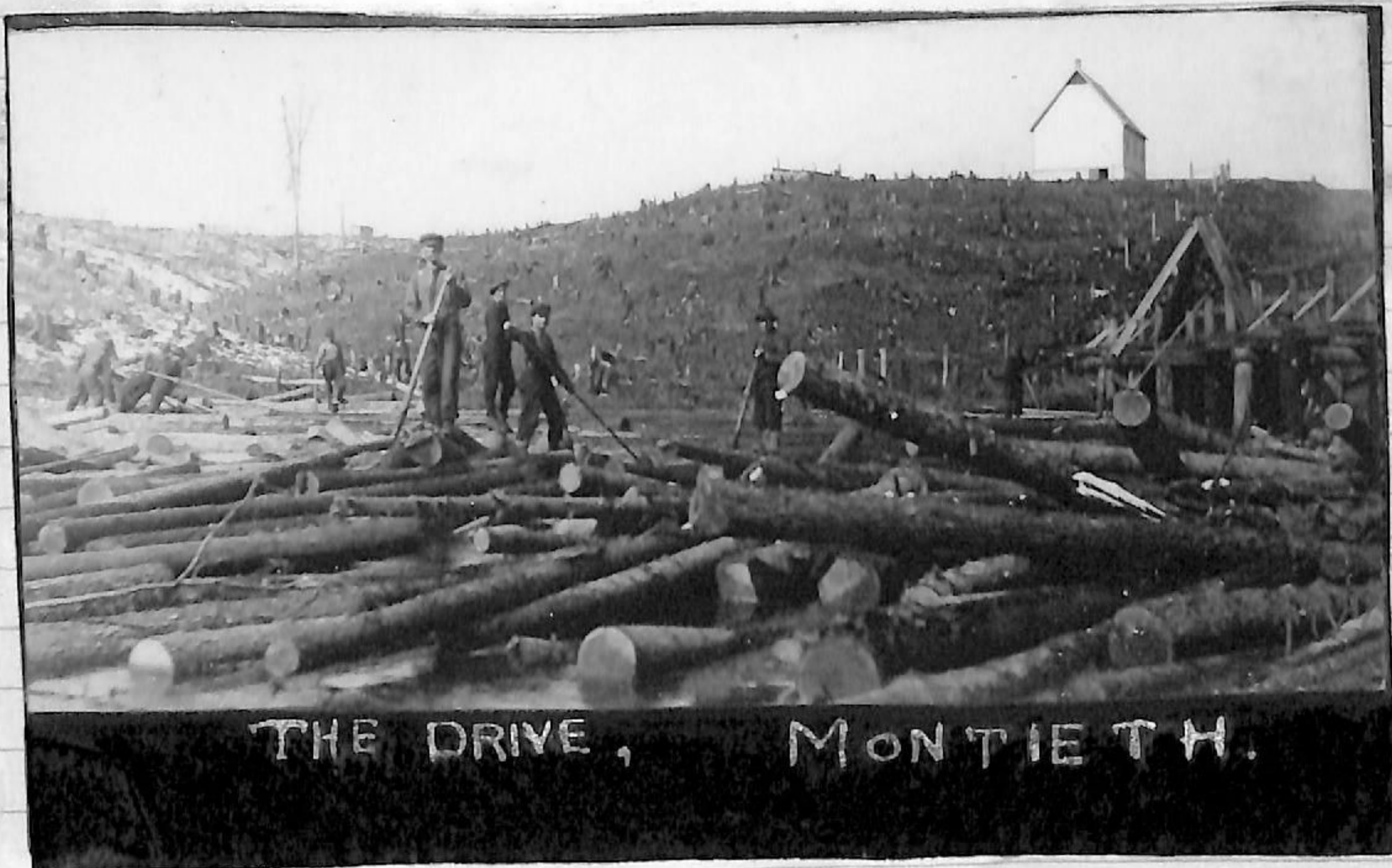


1915. 11. 10

Demonstration Day,

while property was used as a demonstration farm, by the Ontario government.



THE DRIVE, MONTIETH.

First Farm  
Super.  
R.H. Clemens



Used first as Principals Residence, during school period.

Later, during World War II as Serjants' mess.

Later - renovated for residence for the Superintendent of the Industrial Farm.