

1917

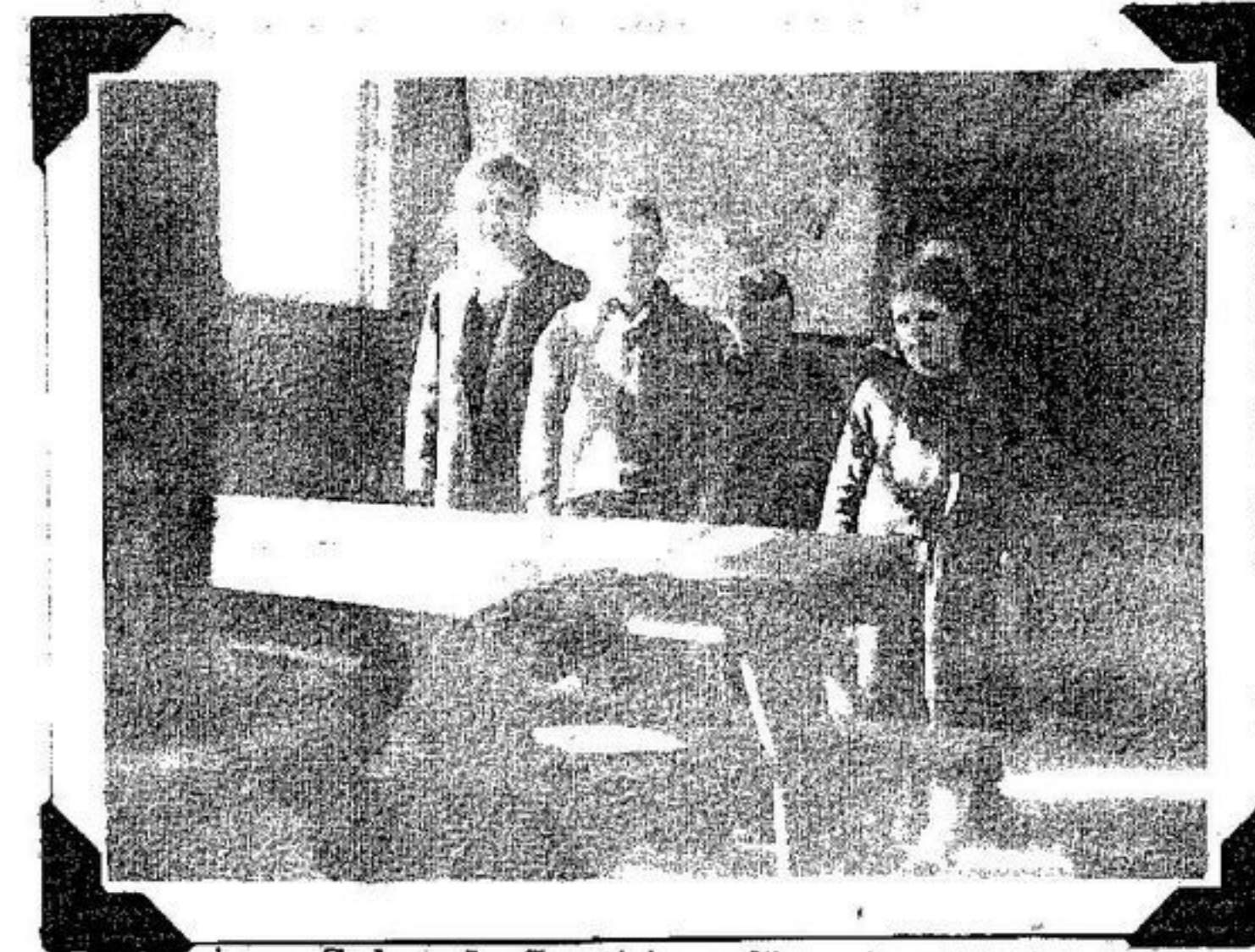
The school was built, Mr. Thomas Rowan being the builder, and school was opened, with Mrs. Baldwin as teacher.

On July 27th, the Chief Fire Ranger drove his car to Clute, the first automobile to drive over the road.

R. A. Dodds' sawmill began operation during this summer.

Among those enlisted and overseas from Clute were Mr. E. E. Phillips and Mr. Wm. Kurtzweg.

*Recd
Museum Mitchell Jr 11/16 1917*



Union School Section No. 1, Blount, Clute, Leitch and Glackmeyer

Vera Cowan, Hugh Rowan, John Rowan and Edith Cowan, standing behind the long benches.



Hugh Rowan, Willie Rowan, John Rowan, Vera Cowan and Edith Cowan, outside the new Clute School