

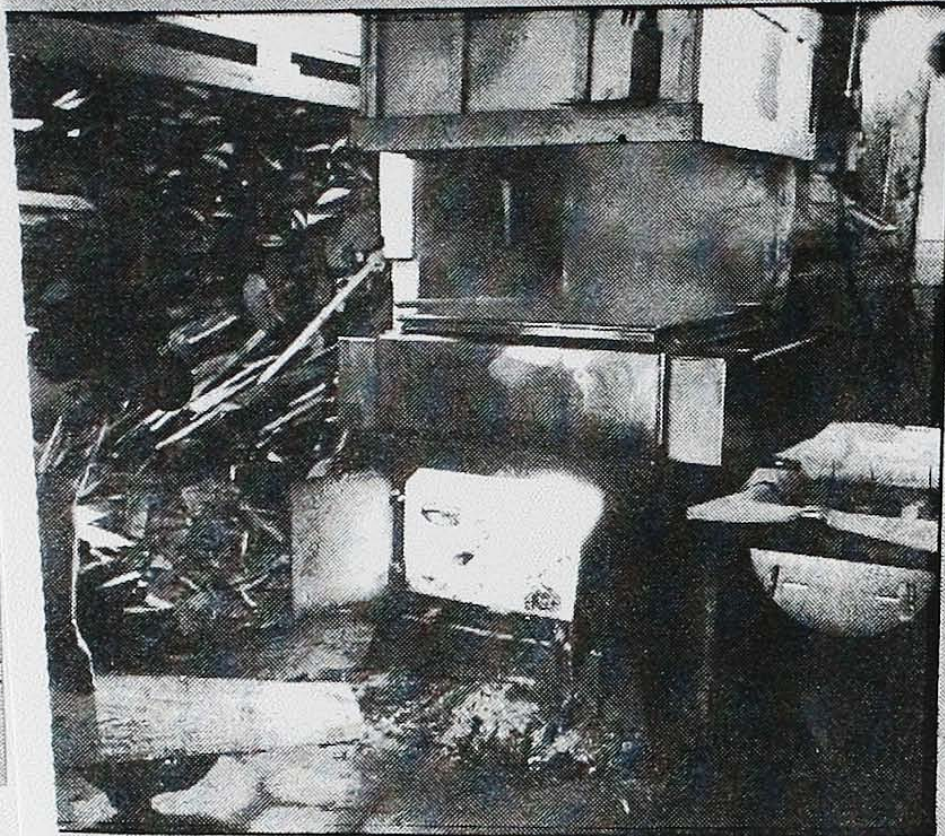
V-2
658 58

Current Ontario Maple Syrup Producers' Association president Bill Robinson runs about 10,000 taps in his Blyth-area operation, Lesperance said.

Preparations begin in December, cleaning and laying pipe down the slopes to draw sap into a low-lying trunk line that feeds a vacuum pump into the syrup house.

All the trees in Lesperance's bush are connected by a system of pipes and tubes to a huge, 25,500 litre, stainless steel milk trailer.

The trailer, which once belonged to Teeswater Creamery, is a bit battered

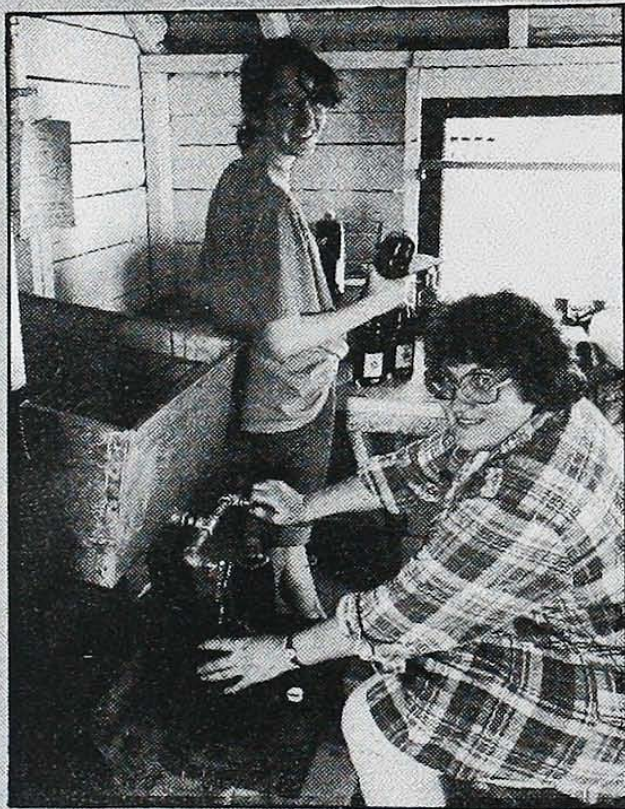


Lesperance stokes fire underneath evaporator

Photos by
Sun Times photographer
Doug Camp



Amy Cross, left, and her cousin JennyLee Lesperance check plastic lines from maples



Gayle Lesperance, Bob's sister, fills bottles as Amy Cross, left, packs them in boxes