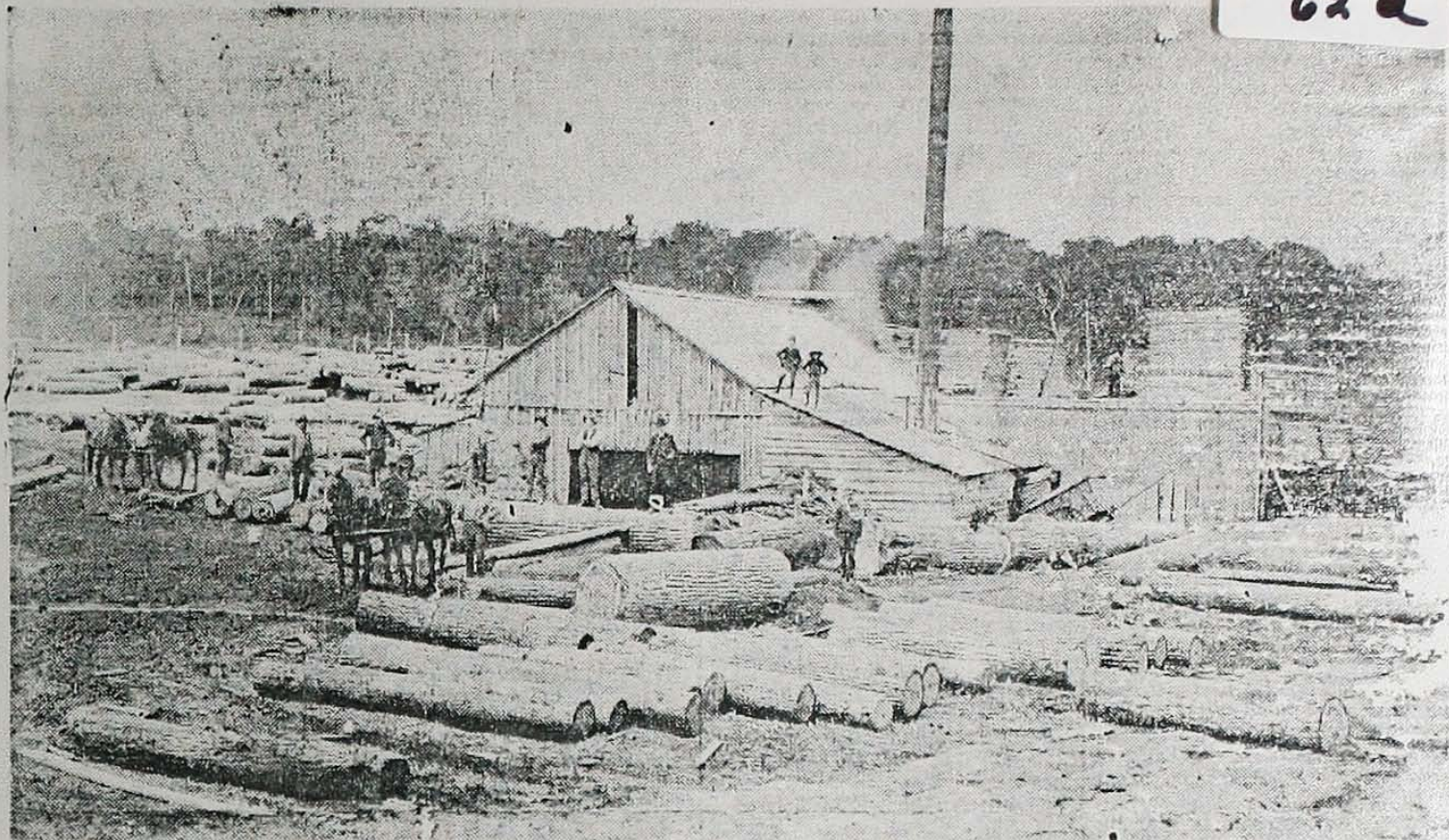


(U-2)
62a



Saw-mills took an immensely important part in the growth of a settlement many years ago. Pictured above is one of the first three that operated on the Sauble River near what came to be the Village of Park Head. Many residents of the village remember this one for it was a place of employment for some of them who are

pioneers of the village. In this picture some of the employees of the time can be seen. From left to right are: unknown, John Rourke, Robert Young, unknown, Jim Milligan, George Fields, Tom Glover, unknown, Lofe Patterson, Alf Henry, Jim Brinkman, Ab Cardingley, Josh Brinkman, Fred Berry and Bill Bolton.

SHALLOW LAKE DAM

Shallow Lake Dam was constructed last year on Parkhead Creek at P. Walker's farm. It is in good working condition and will control the level of Shallow Lake by stop-logs. Another effort to plug the sinkholes near the brick works failed, due to the late season. Next summer these sinkholes can be blocked off by a clay dyke, so that most of this lake will continue to drain through Parkhead Creek during the summer, where it can be controlled.