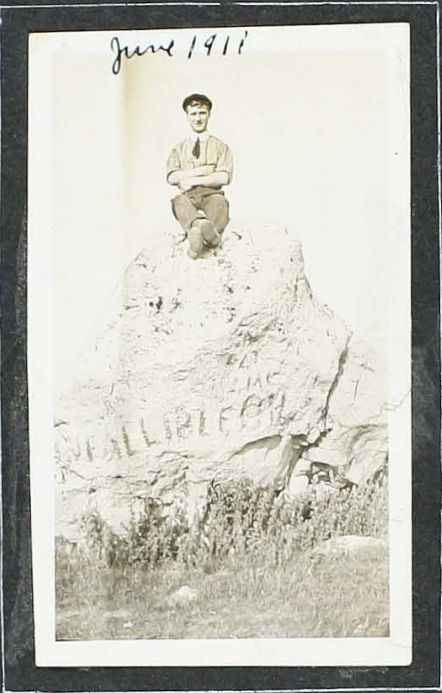
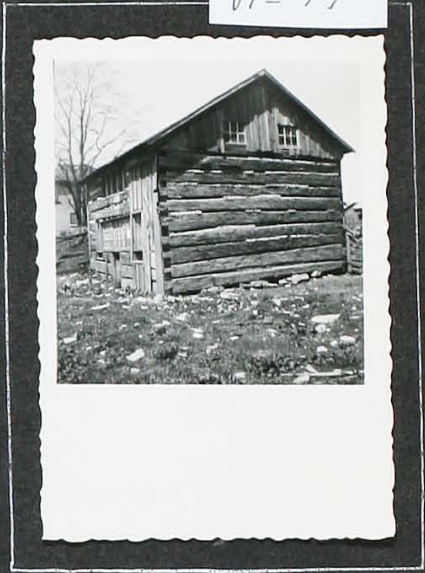




One of the pioneer homes. It is owned and occupied by Mr. & Mrs. Thomas Mitchell. It is situated on the County Line, near Salem School. (Photo taken Apr. 1954)



An old land mark. It was situated on the County line about 300 ft. from the railroad tracks on the east side of the road.



This log structure still stands on the farm of Ross McIntosh, Park Head. This building was the first Post Office. (Photo taken Apr. 1954)



Saw-mills took an immensely important part in the growth of a settlement many years ago. Pictured above is one of the first three that operated on the Sauble River near what came to be the Village of Park Head. Many residents of the village remember this one for it was a place of employment for some of them who are

pioneers of the village. In this picture some of the employees of the time can be seen. From left to right are: unknown, John Rourke, Robert Young, unknown, Jim Milligan, George Fields, Tom Glover, unknown, Lefe Patterson, Alf Henry, Jim Brinkman, A'o Cardingley, Josh Brinkman, Fred Berry and Bill Bolton.

Early Mill on Sauble River near Park Head