



Moore and Nixon-James

A DOORWAY ADOPTS THE DOUBLE STANDARD

The servants' entrance at The Lawn, the Cobourg home of Mrs. W. C. Gumble, has developed particular interest on its own account. Perfect symmetry has been achieved by the balanced treatment, which was probably suggested by the unusual architectural arrangement of the steps. The evergreens, the formal box in decorative pots, the delicate wrought iron railing—all in precise duplicates—give a sense of continuity of plan and dignity of purpose. The built-in fountain provides a drinking-place for the animal pets of the household. Darling & Pearson: Architects



At The Lawn, the estate of Mrs. W. C. Gumble, at Cobourg, Ont., the natural dignity and grace of old trees have been relied upon in the landscaping effects. An occasional architectural detail, such as the stone well-head, serves to heighten the feeling of simple, natural charm

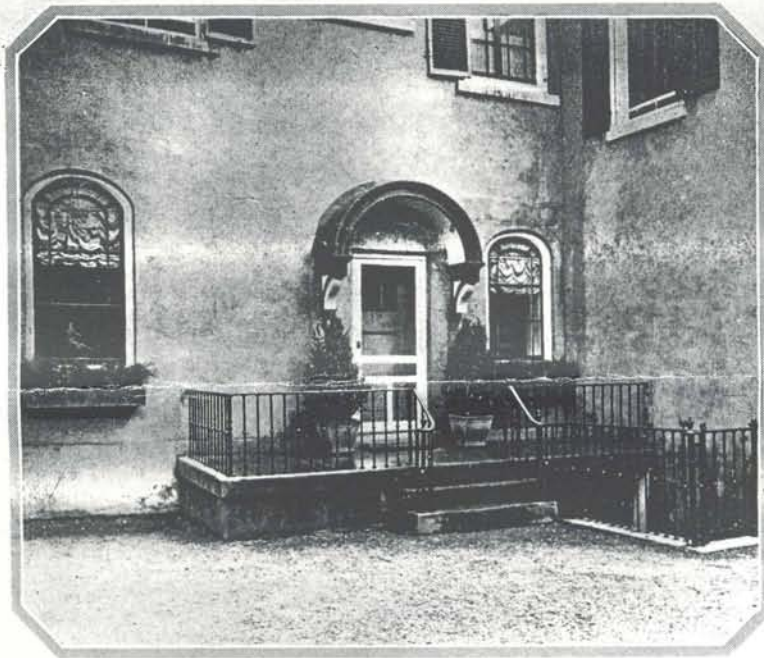


The house is interesting for a number of reasons, and not the least important are the well designed entrances in the various wings. The building has a stucco exterior and is set low on slightly rising ground. Darling and Pearson, Toronto, were the architects

OLD ELMS AND APPLE TREES FOR GRACE



Above: The splay cornered pool in the garden is the central feature of a delightful scheme. Clumps of Iris provide color in the early Summer and later Water Lilies float their fragrant blossoms on the surface of the water, near the green stone frog. Each corner is marked with an ornamental Spruce, and serving as a back screen is a thick Cedar hedge, with Elms towering above



Left: One of the several beautiful entrances at The Lawn. The iron railing, the formal shrubs in square Italian pottery, the classically simple lines of the doorway each contribute to the impression of chaste delicacy, which is so desirable and yet so seldom found. Window boxes brimming with colorful blossoms bring a touch of vivacity into the picture in Summertime

TWO STUDIES IN BALANCED ARRANGEMENT