

MODERN SCHOOLS AND PLAYGROUNDS

Because it is a town of homes, Burlington is a place in which children are welcomed and provided for.

Excellent educational facilities are available. Elementary and secondary schools are of modern construction, well-equipped and expertly staffed.

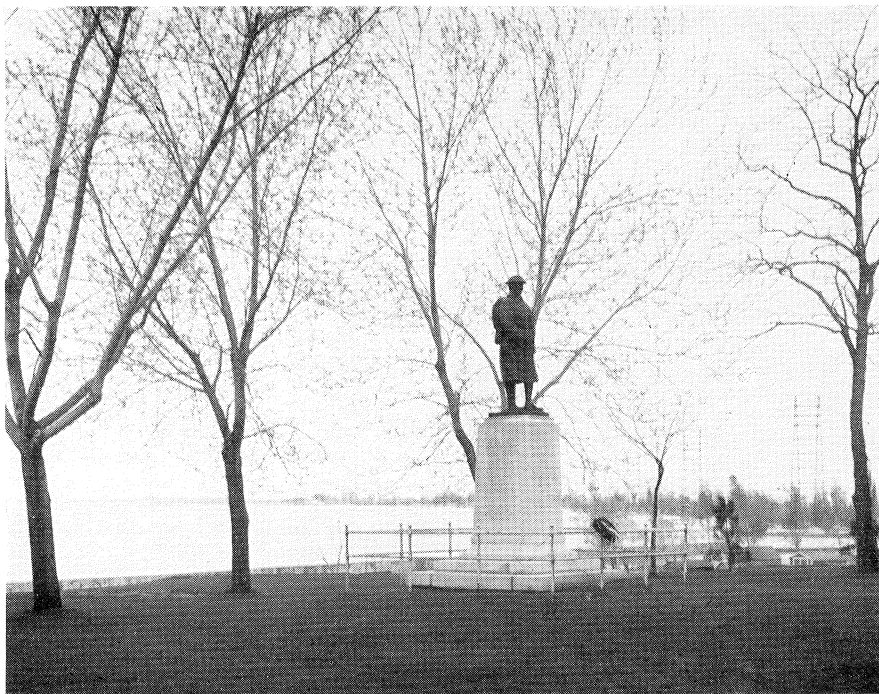
The Burlington High School, illustrated here, is one of the finest in Ontario and covers both high school and commercial courses, preparing students either for a business career or for entrance into University.

Elementary school facilities are of an equally high standard.

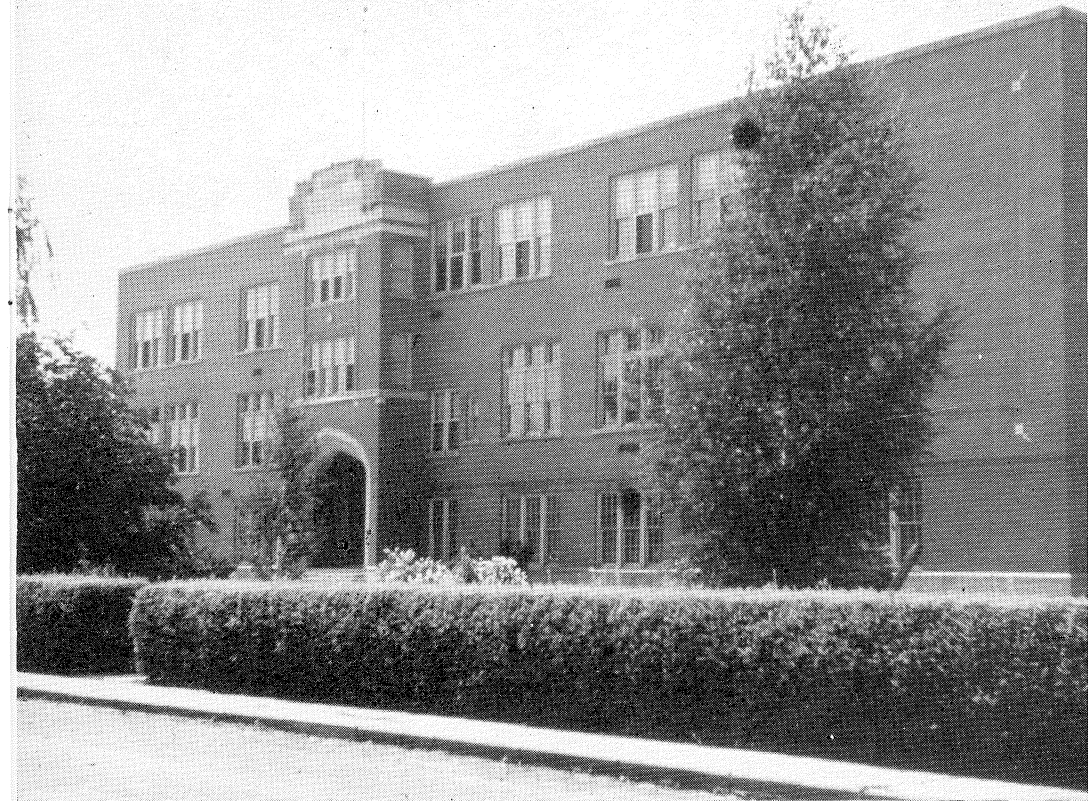
Children can play in Burlington. Parks and playgrounds provide safe, healthful outlets for youthful energy.

The Lions Park, of which a corner is illustrated overleaf, is always a favourite rendezvous for Burlington youngsters who delight in its baseball diamond, its swings and wading pool and its spacious lawns where they may romp at will.

Other attractive parks border the lake-front and surround the Joseph Brant museum facing Burlington Bay.



War Memorial, Lake Front Park, Burlington.



High School

Burlin

BURLINGTON INVITES YOU

Burlington of today is a fast-growing and forward-looking community. Its present population of about 5,000 represents an increase of twenty-five per cent since the official census of 1931.

Its municipal administration is business-like and progressive and keenly appreciates the importance of additional industries to the continued growth and prosperity of the town.

The manufacturer desiring to locate in Burlington will find its welcome both warm and practical, with every possible aid being extended to make the new industry a successful and profitable enterprise.

Labor conditions; living conditions; transportation and power facilities; proximity of markets and sources of supply all favour the selection of Burlington as a business location.

For details of desirable sites, building requirements, taxes, power rates and other information, you are invited to write to the Industrial Commissioner, Burlington, Ontario. Your inquiry will receive prompt and co-operative attention.