

A. S. Nicholson & Son, one of Canada's largest lumber dealers and producers of millwork.

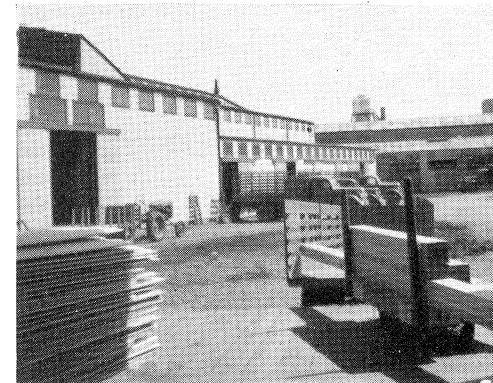
LOCATE YOUR INDUSTRY IN BURLINGTON

Within a two-mile radius of the centre of town, Burlington offers the manufacturer or industrialist the choice of many desirable building locations. Railroad facilities are available if desired. Property is inexpensive and taxes are most reasonable.

*Niagara Brand Spray
Company,
manufacturers of
insecticide and
agricultural sprays.*

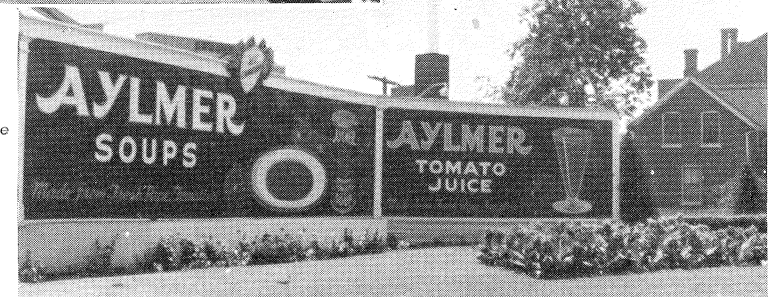


*Tip Top Canners
Limited,
home of this
popular brand of
canned fruits and
vegetables.*

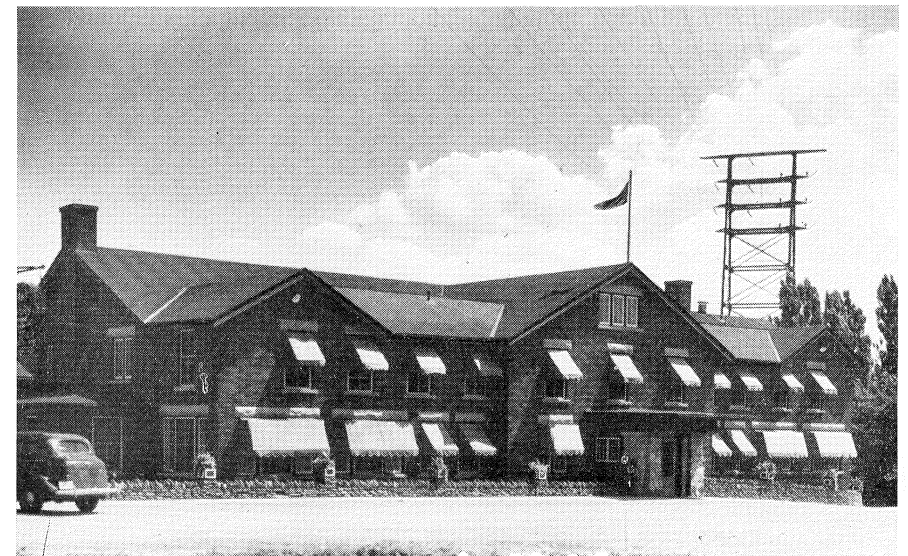


*Halliday Company, Canada's
leading mail-order
building supply house.*

*Canadian
Canners
Limited,
makers of the
well-known
"Aylmer"
Brand of
Food
Products.*



There is no crowding in Burlington. Space is not at a premium. You can plan your building with plenty of room for future expansion. Your workers will enjoy an abundance of fresh air and sunlight and all the advantages which plentiful electric power and modern conveniences can provide.



The Brant Inn, Burlington