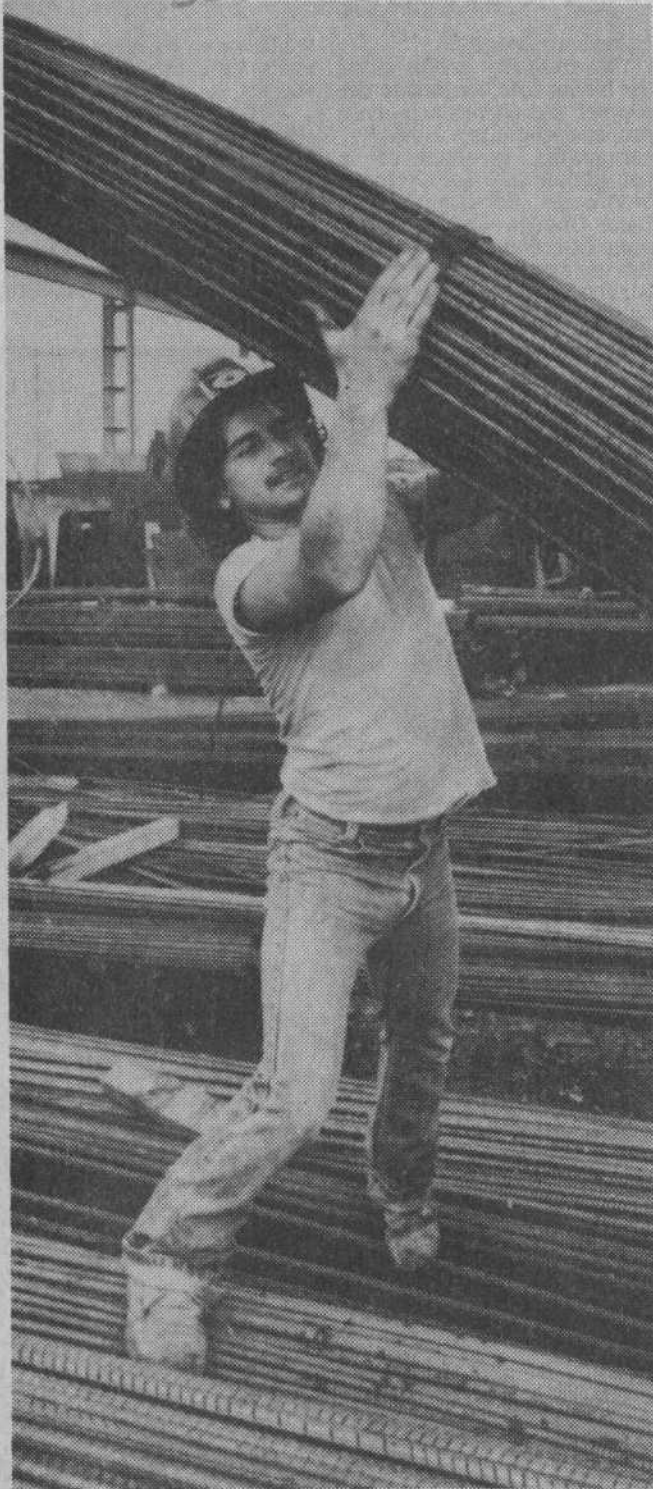


Crawford Metal
Corporation

Still March 31/81
Bel-Industries



Helping with load

Mike Sagriff, outside yard foreman at the Crawford Metal Corporation, carefully follows a large bundle of steel concrete reinforcing as it is winched by the outside crane at the company's yard. The crane ensures swift service to Crawford customers.

(Photo-Bill Whitelaw)